



Tennis Australia Trainee Coaching Course

(Frm. Community)

QLD-MOOLOLABA-AUGUST-WOMEN'S

Applications close: 12 August 2024

Course cost: \$295.00 (Inc. GST)*

*Course fully subsidised by Tennis Australia

Course Information

TENNIS AUSTRALIA TRAINEE COACHING COURSE

(FRM. COMMUNITY)

A great way to start your coaching journey, the Tennis Australia Trainee Coaching Course is suitable for those who would like to begin coaching Tennis, or who are currently coaching, under the guidance of a qualified Tennis coach. This course trains coaches to develop the skills of junior Tennis players with a focus on the Hot Shots Tennis program.

The majority of the time during the course is spent on-court with participants actively learning to deliver coaching sessions where players serve, rally and score using modified balls, racquets, nets and courts appropriate to the developmental needs of junior players.

From the commencement of this course, you may be eligible for up to two years complimentary Tennis Australia Coach Membership as a Trainee Tennis Australia Coach Member.

Course details

The Tennis Australia Trainee Coaching Course will be delivered on:

Thursday 29 August 2024, 6:00pm to 7:00pm – Online learning session via virtual classroom

Saturday 31 August 2024, 12:30pm to 6:30pm – On-court session at KT Tennis Academy

Sunday 1 September 2024, 8:30am to 2:30pm – On-court session at KT Tennis Academy
(3 days, 100% attendance is required)

The venue for this course will be:

KT Tennis Academy, Mooloolaba Tennis Club, Lady Musgrave Drive, Mooloolaba QLD 4557

All applicants will be notified of the status of their application by email within one week of the closing date.

In some instances, there are a limited number of positions available in the course. Course applicants will be admitted to the course based on their application and their ability to meet the course entry criteria.

Course Coordinator

Tennis Australia

Sam Bradshaw

Coach Education Specialist

E: coachedqld@tennis.com.au

M: 0426 558 933

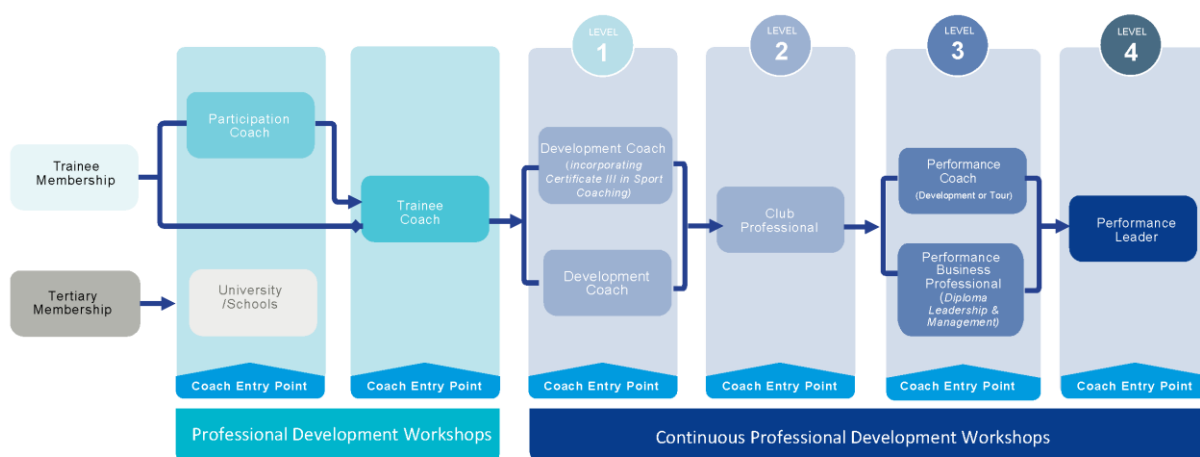
Applications close: 12 August 2024



Learning outcomes

- Update your knowledge of the Hot Shots Tennis program
- Prepare you to conduct Hot Shots Tennis activities
- Introduce you to basic coaching methodology
- Conduct safe tennis activities for junior players
- Use the Tennis Australia Coach Premium App
- Introduce you to the role and responsibilities of a Tennis coach

Tennis Australia Coach Pathway



Course entry criteria

To gain acceptance into the Tennis Australia Trainee Coaching Course applicants are required to meet the following criteria:

- Be a minimum of 16 years of age at the time of the Tennis Australia Trainee Coaching Course¹
- Comply with all requirements of the Tennis Australia Member Protection Policy. This requires a course candidate to hold a current working with children check (WWCC) or your State/Territory equivalent. State/Territory WWCC requirements vary around Australia, details can be found at tennis.com.au/coaches/membership/policies.
- As part of your application, you must obtain and provide Tennis Australia with evidence of the following³
 - A copy of your current Working with Children Check (WWCC) or your state/territory equivalent.
 - A copy of your National Police Check (NPC) available from nationalcrimecheck.com.au at a cost of \$49.90 (Inc. GST)
 - A signed Tennis Australia Member Protection Declaration (MPD), this declaration is completed online as part of your application.
- Maintain a suitable physical fitness level to complete the practical components of the course. If you have any concerns about this component, please contact the Course Coordinator to discuss.

Notes:

1. The course may be completed by a candidate who is 15 years of age upon approval from the course coordinator.
2. Please note to deliver the Tennis for Primary Schools or Secondary Schools program, you must be 18 years of age.
3. More information can be obtained from the course coordinator.

Application checklist

- Complete an application online via the Tennis Australia website (visit courseapplications.tennis.com.au)
- Have the required personal fitness level to physically complete the practical requirements of the coaching course
- Upload a copy of the current WWCC or a receipt of lodgement as required in your state/territory (visit tennis.com.au/coaches/membership/policies) during the online application process
- Upload a copy of your National Police Check or receipt of lodgement as required in your state/territory (visit tennis.com.au/coaches/membership/policies) at a cost of \$49.90 (Inc. GST), during the online application process.
- Payment of \$295.00 (Inc. GST) course fee¹

Notes:

1. *No payment is required from Women who apply for this course. Course is fully subsidised by Tennis Australia.*

Compulsory attendance

If accepted into the course, you must agree to attend all the sessions. In the event of non-attendance you will be required to attend contact days at a future course to make up the sessions missed. If you are unable to attend due to illness a medical certificate is required.

Number of course participants

The maximum number of candidates is 24. This ensures quality in delivery and learning experiences. The maximum Tennis Australia Coach Developer to participant ratio is 1:12 for on-court practical sessions.

Procedure for appeals and complaints

Tennis Australia actively encourages feedback and dialogue with our course participants as part of our continuous improvement philosophy. We established an equitable and transparent process for encouraging and dealing with feedback, complaints, grievances and appeals.

Our policy is governed by the following values and principles:

- All course participants shall have a clear opportunity to express their view on their learning experience, whether positive or negative.
- The process shall be transparent and no course participant shall perceive any disadvantage by expressing their views
- The complaint shall be dealt with at the level of occurrence with opportunity for escalation to hasten resolve
- Complaints that involve a breach of Tennis Australia national policies (e.g. Member Protection policy) shall be directed to the Tennis Australia Integrity team.
- Course participant feedback shall be dealt with in a timely, confidential manner and the participant shall be kept informed of progress.
- Course participant feedback will be analysed and trends built into the company's continuous improvement process so all course participants benefit from the learning of the feedback.

Tennis Australia refund policy

Upon acceptance into the Tennis Australia Trainee Coaching Course, candidates are required to pay the full course fees prior to the first day of the course.

Fees paid by candidates may be refunded in the following circumstances and time frames:

- For withdrawals received in writing, after accepting a place in the course but before the first day of the course, fees will be refunded less a \$50.00 (Inc. GST) administrative fee.
- For withdrawals received after the course start date, no payments will be refunded.

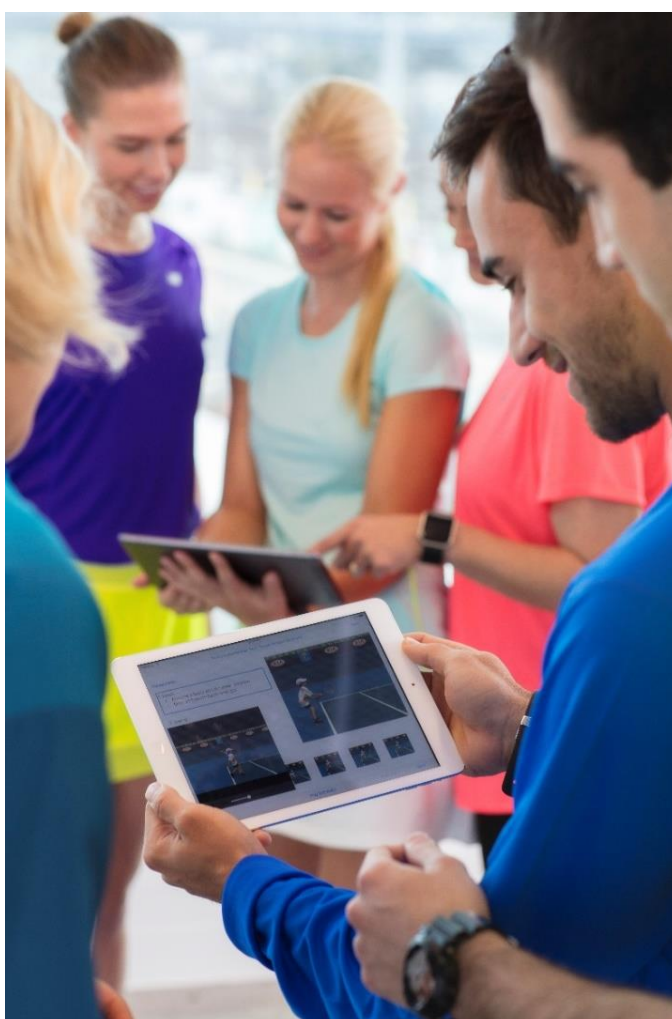
Tennis Australia Coach Membership

On completion of the Tennis Australia Trainee Coaching Course, you may be eligible to receive a complimentary Trainee Tennis Australia Coach Membership (if not already an existing member). Your complimentary membership, valued at up to \$218.00 (Inc. GST) will be valid for 24 months.

The Trainee Tennis Australia Coach Membership includes: Insurance \$30 Million Public Liability and \$10 Million Professional Indemnity and Personal Accident Cover, plus a wide range of benefits and resources.

For further information about Tennis Australia's services, programs or special offers, hit the net! Our website not only keeps you up-to-date with the latest local, national and international tennis news, it also outlines all Tennis Australia Coach Membership services and benefits.

T: 1800 PLAY TENNIS
E: play@tennis.com.au
W: tennis.com.au/coaches





Tennis acknowledges the Traditional Custodians of the land on which we work, rest and play, and pay our respect to Elders past and present.