

Tennis Australia Development Coaching Course (Level 1)

(incorporating SIS30521 Certificate III in Sport Coaching)

VIC-MELBOURNE-SEPTEMBER

Applications close: 19 August 2024

Course cost: \$1,860.00 (Inc. GST)

Course Information

TENNIS AUSTRALIA DEVELOPMENT COACHING COURSE (LEVEL 1) *(INCORPORATING SIS30521 CERTIFICATE III SPORT COACHING)*

During the Tennis Australia Development Coaching Course (Level 1) *(incorporating SIS30521 Certificate III in Sport Coaching)*, participants learn to develop the skills of junior Tennis players through the delivery of the Hot Shots Tennis program. There is a major focus on planning, delivering and reflecting on coaching sessions and creating positive learning environments for children. The course covers the Hot Shots Tennis program, Tennis Australia technical and tactical fundamentals, Cardio Tennis, legal and ethical responsibilities of a coach, risk management, program planning, Tennis rules, personal development and using technology.

From the commencement of this course, you may be eligible for up to two years complimentary Tennis Australia Coach Membership as a Trainee Tennis Australia Coach Member.

Course details

The Tennis Australia Development Coaching Course (Level 1) *(incorporating SIS30521 Certificate III in Sport Coaching)* will be delivered from:

Friday 3 September 2024 to Sunday 23 March 2025 (17 days, 100% attendance is required)

Schedule attached (Subject to change)

The venue for this course will be:

National Tennis Centre, Melbourne Park, Olympic Boulevard, Melbourne VIC 3001

All applicants will be notified of the status of their application by email approximately two weeks after the closing date. In some instances, there are a limited number of positions available in the course. Course applicants will be admitted to the course based on their application and their ability to meet the course entry criteria.

Course Coordinator

Tennis Australia

Martin Rocca

Coach Education Specialist

E: coachedvic@tennis.com.au

M: 0466 593 626

Applications close: 19 August 2024



Course structure

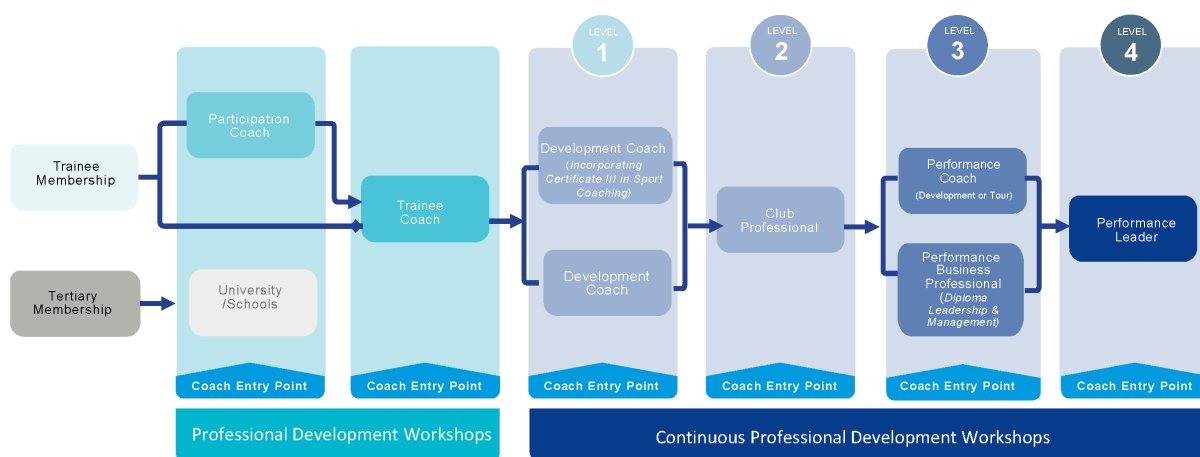
Module 1 – Coaching Tennis

- Unit 1, SISSTNS001 – Coach junior players in Tennis
- Unit 2, SISSSCO004 – Plan, conduct and review coaching programs
- Unit 3, SISSSCO003 – Meet participant coaching needs
- Unit 4, SISSSCO005 – Continuously improve coaching skills and knowledge
- Unit 5, SISSSCO002 – Work in a community coaching role

Module 2 – Responsibilities of the coach

- Unit 6, BSBPEF301 – Organise personal work priorities
- Unit 7, HLTAID011 – Provide first aid
- Unit 8, BSBOPS403 – Apply business risk management processes
- Unit 9, HLTWHS001 – Participate in workplace health and safety
- Unit 10, SISXIND009 – Respond to interpersonal conflict

Tennis Australia Coach Pathway



Course entry criteria

To gain acceptance into the Tennis Australia Development Coaching Course (Level 1) (incorporating SIS30521 Certificate III in Sport Coaching) applicants are required to meet the following criteria:

- Be a minimum of 16 years of age at the time of the Tennis Australia Development Coaching Course (Level 1) (incorporating SIS30521 Certificate III in Sport Coaching)^{1&2}
- Comply with all requirements of the Tennis Australia Member Protection Policy. This requires a course candidate to hold a current working with children check (WWCC) or your State/Territory equivalent. State/Territory WWCC requirements vary around Australia, details can be found at tennis.com.au/coaches/membership/policies.
- As part of your application, you must obtain and provide Tennis Australia with evidence of the following³
 - A copy of your current Working with Children Check (WWCC) or your state/territory equivalent.
 - A copy of your National Police Check (NPC) available from nationalcrimecheck.com.au at a cost of \$49.90 (Inc. GST)
 - A signed Tennis Australia Member Protection Declaration (MPD), this declaration is completed online as part of your application.
- Maintain a suitable physical fitness level to complete the practical components of the course. If you have any concerns about this component, please contact the Course Coordinator to discuss.
- A supervising coach who is at least Club Professional (Level 2) qualified and have them sign the supervising coach commitment form.
- Applicants and supervising coaches may be required to complete an initial entry interview with the Course Coordinator

Notes:

1. The course may be completed by a candidate who is 15 years of age upon approval from the course coordinator.
2. Please note to deliver the Tennis for Primary Schools or Secondary Schools program, you must be 18 years of age.
3. More information can be obtained from the Course Coordinator.

Application checklist

- Complete an application online via the Tennis Australia website (visit courseapplications.tennis.com.au)
- Have the required personal fitness level to physically complete the practical requirements of the coaching course
- A copy of the current WWCC or a receipt of lodgement as required in your state/territory (visit tennis.com.au/coaches/membership/policies) during the online application process
- A copy of your National Police Check or receipt of lodgement as required in your state/territory (visit tennis.com.au/coaches/membership/policies) at a cost of \$49.90 (Inc. GST), during the online application process.
- Signed supervising coach commitment form. Supervising coach must be at least Club Professional (Level 2) qualified.
- Payment of \$1,860.00 (Inc. GST) course fee¹

Notes:

1. From time to time special or promotional discounts or scholarships may be offered.

Compulsory attendance

If accepted into the course, you must agree to attend all the sessions. In the event of non-attendance, you will be required to attend contact days at a future course to make up the sessions missed. If you are unable to attend due to illness, a medical certificate is required.

Coaching practice – supervising coach

Coaching practice is incorporated into “Module 1 – Coaching Tennis” of the Tennis Australia Development Coaching Course (Level 1) (*incorporating SIS30521 Certificate III in Sport Coaching*). During the course, candidates must complete 40 hours of practical coaching with junior players (Red, Orange & Green stage players). Confirmation of these hours is required through the completion of a coaching log sheet provided during the course. These hours must be completed under the guidance of a supervising coach at least Club Professional (Level 2) qualified.



Number of course participants

The maximum number of candidates is 24. This ensures quality in delivery and learning experiences. The maximum Tennis Australia Coach Developer to participant ratio is 1:8 for on-court practical sessions.

Assessment

All modules in this coaching course involve assessment. Opportunities to demonstrate competence are many and varied and include observation and demonstration of coaching session, written and oral questioning, peer assessment, roles players and projects.

The Tennis Australia Coach Developers will implement flexible assessment methods to allow those with special needs to undertake an alternative form of assessment. Should you have any special needs it is highly recommended you bring these to the attention of the Course Coordinator before the start of the course.



Course completion

Course participants will have 12 months from the course start date to complete all units to a competent standard. If this is not achieved, an administration fee of \$350.00 (Inc. GST) will be incurred by the course participant and a course extension form issued. Following receipt of this payment and return of the extension form, the course deadline will be extended, but not exceed 24 months from the course start date.

Course cost

The course fee includes the cost of the Tennis Australia Development Coaching Course (Level 1) (*incorporating SIS30521 Certificate III in Sport Coaching*) \$1,541.00 (Inc. GST), plus Tennis Australia Coach Membership \$319.00 (Inc. GST) for a total cost of \$1,860.00 (Inc. GST).

Recognition of Current Competence (RCC), Recognition of Prior Learning (RPL) and Credit Transfer (CT)

Applicants are expected to attend all units. Applicants who believe they have current competence, credit transfers or recognition of prior learning in any unit of competency may apply for their Course Coordinator.

This process should be completed prior to beginning the Tennis Australia Development Coaching Course (Level 1) (*incorporating SIS30521 Certificate III in Sport Coaching*). No units will be waived or excluded in any other way. For more information about the process, please contact your Course Coordinator.

Procedure for appeals and complaints

Tennis Australia actively encourages feedback and dialogue with our course participants as part of our continuous improvement philosophy. We established an equitable and transparent process for encouraging and dealing with feedback, complaints, grievances and appeals.

Our policy is governed by the following values and principles:

- All course participants shall have a clear opportunity to express their view on their learning experience, whether positive or negative.
- The process shall be transparent and no course participant shall perceive any disadvantage by expressing their views
- The complaint shall be dealt with at the level of occurrence with opportunity for escalation to hasten resolve
- Complaints that involve a breach of Tennis Australia national policies (e.g. Member Protection policy) shall be directed to the Tennis Australia Integrity team.
- Course participant feedback shall be dealt with in a timely, confidential manner and the participant shall be kept informed of progress.
- Course participant feedback will be analysed and trends built into the company's continuous improvement process so all course participants benefit from the learning of the feedback.

Tennis Australia refund policy

Upon acceptance into the Tennis Australia Development Coaching Course (Level 1) (*incorporating SIS30521 Certificate III in Sport Coaching*), candidates are required to pay the full course fees prior to the first day of the course. If you would like to discuss payment via instalments, please contact your Course Coordinator.

Fees paid by candidates may be refunded in the following circumstances and time frames:

- For withdrawals received in writing, after accepting a place in the course but before the first day of the course, fees will be refunded less a \$150.00 (Inc. GST) administrative fee.
- For withdrawals received after the course start date, no payments will be refunded.

Tennis Australia Coach Membership

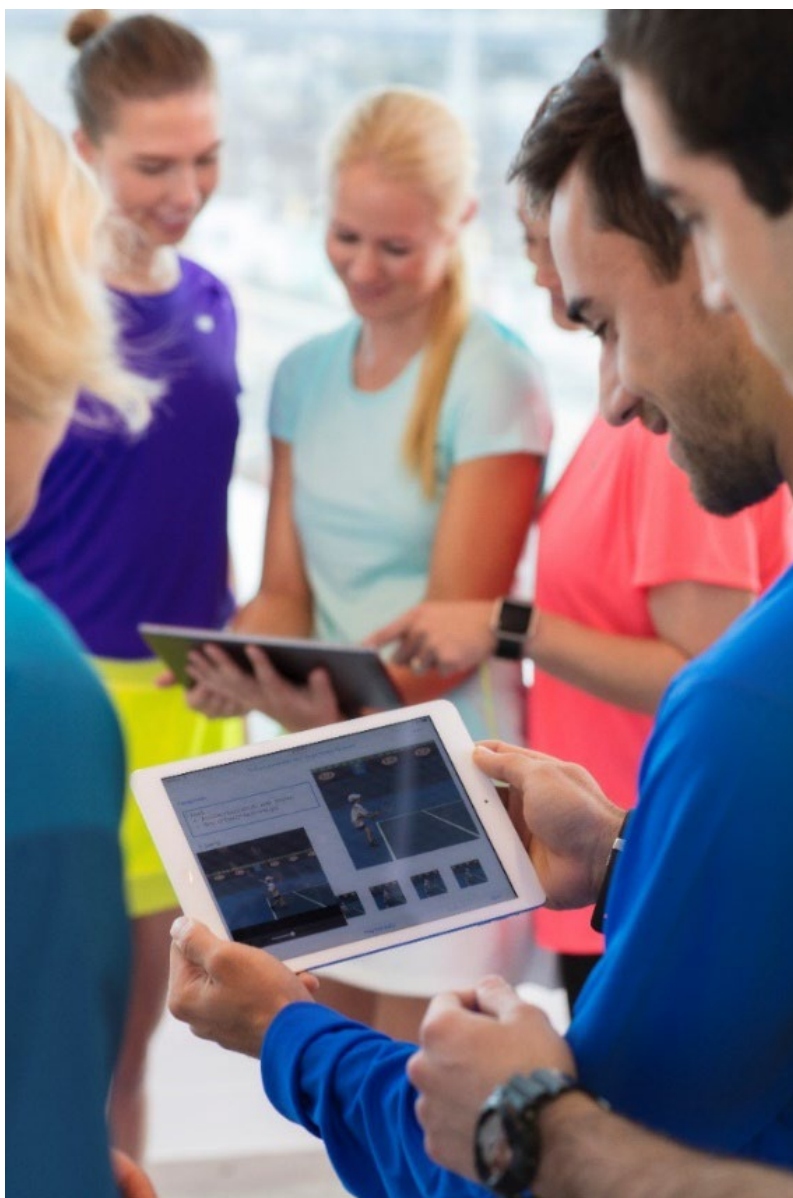
On acceptance into the Tennis Australia Development Coaching Course (Level 1) (*incorporating SIS30521 Certificate III in Sport Coaching*), you may be eligible to receive a complimentary Trainee Tennis Australia Coach Membership (if not already an existing member). Your complimentary membership, valued at up to \$218.00 (Inc. GST) will be valid for 24 months.

The Trainee Tennis Australia Coach Membership includes: Insurance \$30 Million Public Liability and \$10 Million Professional Indemnity and Personal Accident Cover, plus a wide range of benefits and resources.

Additional membership benefits will be available to you when you successfully complete the course and are required to upgrade to become a Qualified Tennis Australia Coach Member. Among the many benefits are: access to the Tennis programs Hot Shots Tennis and Cardio Tennis, Tennis band, outdoor coaching signs, insurance, e-news, information services (eg. Coaches World e-newsletter), find a coach listing and much more.

For further information about Tennis Australia's services, programs or special offers, hit the net! Our website not only keeps you up-to-date with the latest local, national and international tennis news, it also outlines all Tennis Australia Coach Membership services and benefits.

T: 1800 PLAY TENNIS
E: play@tennis.com.au
W: tennis.com.au/coaches



TENNIS AUSTRALIA DEVELOPMENT COACHING COURSE (LEVEL 1)

(INCORPORATING SIS30521 CERTIFICATE III IN SPORT COACHING)

2024 VIC MELBOURNE SEPTEMBER - COURSE SCHEDULE

Day	Date	Time	Content	Mode	
Virtual Classroom	3 Sep 2024	1.5 hours	Introduction, learning outcomes & expectations	VC	
1	Fri	6 Sep 2024	7:30am-2:30pm	Module 1 – Coaching Tennis (Introduction, Coach Framework, Blue Stage)	On & off court
2	Fri	13 Sep 2024	7:30am-2:30pm	Module 1 – Coaching Tennis (Blue Stage/Red Stage 1)	On-court
3	Fri	20 Sep 2024	7:30am-2:30pm	Module 1 – Coaching Tennis (Red Stage 1/Red Stage 2)	On-court
4	Fri	11 Oct 2024	7:30am-2:30pm	Module 1 – Coaching Tennis (Red Stage 2/Red Stage 3)	On-court
5	Fri	18 Oct 2024	7:30am-2:30pm	Module 1 – Coaching Tennis (Red Stage 3/Red Stage Competition/Analysis & Correction)	On & off court
6	Sun	3 Nov 2024	8:00am-5:00pm (*1 hour)	Module 1 – Coaching Tennis Red Stage Assessments – On-court – 5 min player profile + 30 min lesson + 15 min feedback – total 50 minutes	Video Assessment
7	Fri	8 Nov 2024	7:30am-2:30pm	Module 1 – Coaching Tennis (Analysis & Correction/ Orange Stage 1)	On-court
8	Fri	15 Nov 2024	7:30am-2:30pm	Module 1 – Coaching Tennis (Orange Stage 1/Orange Stage 2)	On-court
9	Fri	22 Nov 2024	7:30am-2:30pm	Module 1 – Coaching Tennis (Orange Stage 2/Orange Stage Competition/Doubles)	On-court
10	Sun	1 Dec 2024	8:00am-5:00pm (*1 hour)	Module 1 – Coaching Tennis Orange Stage Assessments – On-court – 5 min player profile + 30 min lesson + 15 min feedback – total 50 minutes	On-court
11	Fri	6 Dec 2024	7:30am-2:30pm	Module 1 – Coaching Tennis (Green Stage 1)	On & Offcourt
12	Fri	21 Feb 2025	7:30am-2:30pm	Module 1 – Coaching Tennis (Green Stage 2/Private Lesson)	On & off court
13	Fri	28 Feb 2025	7:30am-2:30pm	Module 2 - Responsibilities of the coach (Risk & integrity/Managing conflict) Module 1 – Inclusion (on court) Module 1 – Coaching Tennis (Adult Coaching – offcourt)	On & off court
14	Fri	7 Mar 2025	7:30am-2:30pm	Module 1 – Coaching Tennis (Adult Coaching/Cardio Tennis)	On-court
15	Fri	14 Mar 2025	9:00am-12:00pm	Module 2 - Responsibilities of the coach (First Aid - HLTAID011)	Off-court
16	Sun	23 Mar 2025	8:00am-5:00pm (*1 hour)	Module 1 – Coaching Tennis Green Stage Assessments - On-court - 5 min player profile + 45 min lesson + 10 min feedback – total 60 minutes	On-court

Notes:

- This course schedule is subject to change
- To maximise the outcomes of the course, attendance at all sessions is compulsory
- If you are unable to attend a session, you must notify the Course Coordinator prior to the commencement of the course
- A medical certificate may be required if you are unable to attend any sessions due to illness

Course participant supervising coach details

Supervising coach information

Title (please circle): Mr Miss Ms Mrs

Last name: _____ First name: _____

Address: _____

Suburb: _____

State: _____ Postcode: _____

Email: _____

Home phone: _____ Mobile: _____

My Tennis (Coach Membership) number: _____

Tennis Australia coach qualification (Must be minimum Club Professional qualified): _____

Supervising coach commitment

By completing and signing this application form, I fully understand my role and commitment to _____ as their supervising coach. *(insert course participant's name)*

I agree to make all reasonable efforts to provide support and offer experiences to progress the course participant's coaching skills.

I agree to act professionally, ethically and to abide by Tennis Australia's National Policies, including the Member Protection Policy and the Coaches' Code of Conduct at all times.

The supervising coach is expected to assist the course participant in the following areas:

- session planning
- group and time management and communication
- session delivery and catering for the needs of individual players in each group.
- assistance with analysis and improvement of technical and tactical skills of junior players
- assist in sourcing four players for each of the following on-court assessments — red stage (beginner players aged 6–8 years), orange stage (players aged 8–10 years) and green stage (players aged 10–12 years). These players should be able to maintain a basic rally appropriate to their age and stage.
- submit a third party report which will provide additional evidence of the course participant's competency in a range of areas as demonstrated in their workplace (e.g., maintaining equipment). A template for this report will be provided.

Should I have any questions and queries I will direct them to the Course Coordinator and work with them in making the coaching course experience as fulfilling as possible for the course participant.

Privacy

To assist us in the provision of products and services, we need to collect personal information about you. When you provide personal information you agree that this will be used by Tennis Australia and other Australian Tennis Organisations under the terms of this statement, and the tennis privacy policy located at www.tennis.com.au/privacy, which contains information about how you may access and seek correction of your personal information or complain about a breach of your privacy, and how we will deal with that complaint. If you do not agree, you must not provide your personal information, and you may be unable to access all of our products and services. We may disclose your personal information to other parties, including our related companies, other Australian Tennis Organisations, and third parties who provide us services. From time to time, these third parties may be located (and therefore your personal information may be disclosed overseas, including to the USA and the Netherlands). We may use and disclose your personal information for direct marketing purposes regarding the products and services you are signing up to receive, unless you opt-out (which you can do at any time in accordance with the tennis privacy policy), and for facilitating further offers if you tick one of the boxes below.

- I wish to receive further offers from Tennis Australia and other Australian Tennis Organisations regarding other products and services. [optional].
- I wish to receive other offers from third parties who have a relationship with Tennis Australia or other Australian Tennis Organisations about their products and services. [optional].

Name (print) _____ Signature _____ Date _____



Tennis acknowledges the Traditional Custodians of the land on which we work, rest and play, and pay our respect to Elders past and present.