

Tennis Australia

# Community Coaching Course

QLD - Sunshine Beach / Sunshine Coast - Womens' (July)

Applications close - 3 July

Course cost - \$295 (incl. GST)\*

\*Course fully subsidised by Tennis Australia

[Course Information](#)

# Tennis Australia Community Coaching Course

A great way to start your coaching journey, the Community Coaching Course is suitable for those who would like to begin coaching tennis, or who are currently coaching, under the guidance of a qualified tennis coach. This course trains coaches to develop the skills of junior tennis players with a focus on the Tennis Hot Shots program.

The majority of time during the course is spent on-court with participants actively learning to deliver coaching sessions where players serve, rally and score using modified balls, racquets, nets and courts appropriate to the developmental needs of junior players.

Upon completing this course you may be eligible for up to one year's complimentary Tennis Australia Coach Membership as a trainee coach member.

## Course details

The Tennis Australia Community Coaching Course will be delivered on:

Wednesday 19 July 2023, 5:00pm to 6:30pm - Online learning session via virtual classroom

Saturday 22 July 2023, 12:30pm to 6:30pm - On-court session at Noosa Tennis Club

Sunday 23 July 2023, 8:30am to 2:30pm - On-court session at Noosa Tennis Club

Wednesday 26 July 2023, 5:00pm to 6:30pm - Online learning session via virtual classroom (4 days, 100% attendance is required)

The venue for this course will be:

Noosa Tennis Club, Girraween Court, Sunshine Beach QLD 4567

All applicants will be notified of the status of their application by email approximately two weeks after the closing date.

In some instances there are a limited number of positions available in the course. Course applicants will be admitted to the course based on their application and their ability to meet the course entry criteria.

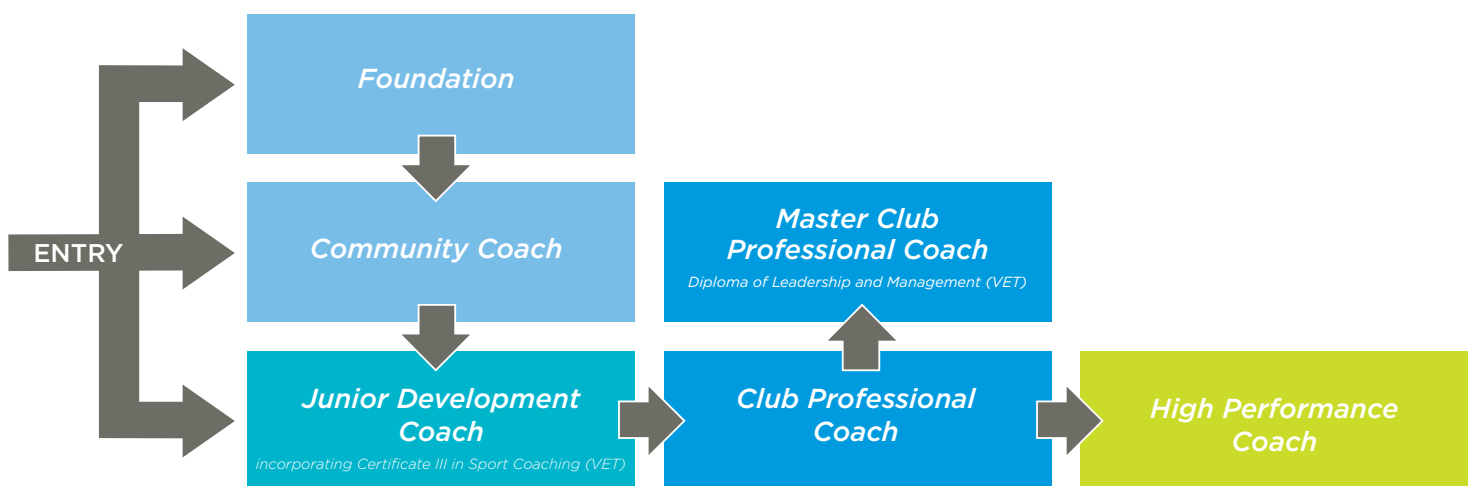
Course Coordinator  
Tennis Australia  
Samuel Bradshaw  
e: [coachedqld@tennis.com.au](mailto:coachedqld@tennis.com.au)  
t: 0426 558 933

Applications close: 3 July, 2023





## Tennis Australia Coaching Pathway



## Tennis Australia Community Coaching Course

### Learning Outcomes

- Update your knowledge of the Tennis Hot Shots program
- Prepare you to conduct Tennis Hot Shots activities
- Introduce you to basic coaching methodology
- Conduct safe tennis activities for junior players
- Use the Tennis Australia Hot Shots app
- Introduce you to the role and responsibilities of a tennis coach

## Course entry criteria

To gain acceptance into the Tennis Australia Community coaching course applicants are required to meet the following entry criteria. Candidates are required to:

- Be a minimum of 16 years of age at the time of Tennis Australia Community coaching course.<sup>1</sup>
- Comply with all requirements of the Tennis Australia Member Protection Policy. This requires a course candidate to hold a current Working with Children Check (WWCC) or your State/Territory equivalent. The State/Territory WWCC requirements vary around Australia and can be found at [tennis.com.au/coaches/membership/policies](http://tennis.com.au/coaches/membership/policies).
- As part of your application, you must obtain and provide Tennis Australia with evidence of the following:<sup>2</sup>
  - A copy of a current Working with Children Check (WWCC) or your State/Territory equivalent.
  - A signed Tennis Australia Member Protection Declaration (MPD). This declaration is completed online
  - A National Police Check available from [www.nationalcrimecheck.com.au](http://www.nationalcrimecheck.com.au) at a cost of \$49, provide a copy for acceptance during the online application
- Maintain a suitable physical fitness level to complete the practical components of the course. If you have any concerns about this component please contact the Course Coordinator to discuss.

### Notes:

<sup>1</sup> The course may be completed by a candidate who is less than 16 years of age but the candidate will not receive the Tennis Australia Community coach certificate until such time as this age requirement has been met.

<sup>2</sup> More information can be obtained from the course coordinator

## Application checklist

- Complete application online.
- Candidates must be a minimum of 16 years of age to receive the Tennis Australia Community coach certificate. Please note, to deliver the Tennis for Primary Schools or Secondary Schools program, you **must** be 18 years of age.
- Have the required personal fitness level to physically complete the practical requirements of the coaching course.
- Upload relevant WWCC as required in your state or territory (visit [tennis.com.au/coaches/membership/policies](http://tennis.com.au/coaches/membership/policies)) during the online application process.
- Upload copy of a satisfactory National Police Check during the online application process.
- Payment of \$295 (incl GST) course fee<sup>1</sup>.

### Notes:

<sup>1</sup> No payment is required from Women who apply for this course. Course is fully subsidised by Tennis Australia.



## Compulsory attendance

If accepted into the course, you must agree to attend the face-to-face sessions. In the event of non-attendance you will be required to attend contact days at a future course to make up the sessions missed. If you are unable to attend due to illness a medical certificate is required.

## Number of course participants

The maximum number of candidates is 24. This ensures quality in delivery and learning experiences. The maximum Coach Developer to participant ratio is 1:12 for on-court practical sessions.

## Procedure for appeals and complaints

Tennis Australia actively encourages feedback and dialogue with our course participants as part of our continuous improvement philosophy. We established an equitable and transparent process for encouraging and dealing with feedback, complaints, grievances and appeals.

Our policy is governed by the following values and principles:

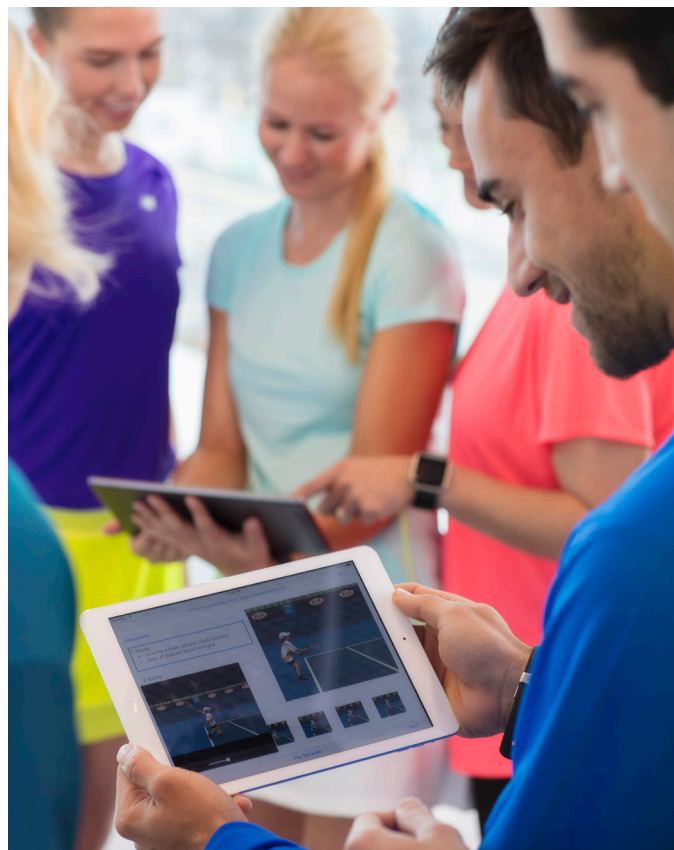
- All course participants shall have a clear opportunity to express their view on their learning experience, whether positive or negative.
- The process shall be transparent and no course participant shall perceive any disadvantage by expressing their views.
- The complaint shall be dealt with at the level of occurrence with opportunity for escalation to hasten resolve.
- Complaints that involve a breach of Tennis Australia national policies (e.g. Member Protection policy) shall be directed to the Tennis Australia Integrity team.
- Course participant feedback shall be dealt with in a timely, confidential manner and the participant shall be kept informed of progress.
- Course participant feedback will be analysed and trends built into the company's continuous improvement process so all course participants benefit from the learning of the feedback.

## Tennis Australia refund policy

Upon acceptance into the Tennis Australia Community coaching course, candidates are required to pay the full course fees prior to the first day of the course.

Fees paid by candidates may be refunded in the following circumstances and time frames:

- For withdrawals received in writing, after accepting a place in the course but before the first day of the course, fees will be refunded less a \$50 (incl. GST) administration fee.
- For withdrawals received after the course start date, no payments will be refunded.



## Coach Membership

On completion of the Tennis Australia Community coaching course you may be eligible to receive a complimentary Trainee Coach Membership (if you are not already an existing member. Your complimentary membership, valued at \$149 (incl. GST), will be valid until the end of the financial year during which the face-to-face component of your course is completed.

The Trainee Coach Membership includes: Insurance: \$30 Million Public Liability and \$10 Million Professional Identity and Personal Accident Cover plus a wide range of benefits and resources.

For further information about Tennis Australia's services, programs or special offers - hit the net! Our website not only keeps you up-to-date with the latest local, national and international tennis news, it also outlines all Coach Membership services and benefits.

**T:** 1800 PLAY TENNIS

**E:** [play@tennis.com.au](mailto:play@tennis.com.au)

**W:** [tennis.com.au/coaches](http://tennis.com.au/coaches)