

2019 Australian Ranking Tournament Rules and Regulations

Australian Money Tournaments

Junior Tournaments

Australian Rankings

Supporting Tournament Policies

Version 1 Released – January 4, 2019

This version of the 2019 Australian Ranking Tournament Regulations are subject to amendments and updates during the year. Please ensure you visit www.tennis.com.au/tournaments/regulations regularly throughout the year in case changes are made.



**GET
COURT
UP**

Table of Contents

Please note that where amendments have been made in these Regulations the text is underlined and/or highlighted

1. Purpose and Applicability	7
2. Regulation Compliance	7
2.1 By the Event	7
2.2 By the Athlete / Parent	8
3. Categories of Tournaments	8
4. Complaints	9
5. Amendments	9
6. Miscellaneous / Contact Details	9
Section 1: Tournament Administration.....	11
1. Tournament Computer Software	11
1.1 Tournament Planner	11
1.2 Online Payment Gateway – Stripe.....	11
1.3 Online Tournament Fact Sheet	12
2. Tournament Staff.....	12
2.1 Tournament Committee	12
2.2 Tournament Director	13
2.3 Sports Physiotherapist and Tournament Doctor	14
2.4 Stringer	14
3. Facilities and On-site Conditions	15
3.1 Courts / Venues.....	15
3.2 Court Equipment.....	15
3.3 Warm-up / Practice Courts.....	16
3.4 Artificial Lighting	16
3.5 Venue Appearance and Amenities.....	16
3.6 Sponsorship / Advertising / Branding	17
3.7 Canteen	17
3.8 Signage.....	17
3.9 Internet Access.....	17
3.10 Changerooms	17
3.11 Sports Physiotherapist Treatment Room	17
4. Tournament Planning	18
4.1 Pre-Tournament Commencement Timetable	18
4.2 Event Structure at Tournaments	19
4.3 Tournament Match Plan	19
5. Financial	20
5.1 Entry Fees.....	20

5.2	Entry Fee Refunds	20
6.	Draws	21
6.1	Making the Draws	21
6.2	Draw Formats and Sizes.....	21
6.3	Qualifying Draw Structure.....	28
6.4	Round-Robin Draw Structure (JTs only)	30
6.5	Seedings - AMTs and JTs.....	34
6.6	Number of Seeds.....	35
6.7	Placement of Seeds	36
6.8	Optimal state separation of athletes	37
6.9	Qualifiers / Lucky Losers placement and priority	37
6.10	Byes – Assignment and Placement	39
6.11	Remaining Athletes	40
6.12	Remake of Draws.....	40
6.13	Minimum Prizemoney	41
6.14	Prize money distribution in the case of abandoned tournaments	42
6.15	Payment method for prizemoney	42
6.16	Unpaid entry fees and prizemoney payment.....	42
6.17	Prizes and Non-Cash Awards	42
6.18	Bonus prize money as part of a circuit	43
6.19	Additional prizemoney above the minimum	43
6.20	Small Draw Reduction	43
6.21	Prizemoney for Junior Tournaments	44
6.22	Balls	44
6.23	Tennis Australia Approved Tennis Ball List.....	45
7.	Scoring Formats	46
Section 2: Officiating Roles & Procedures		51
1.	Code Violations	51
2.	Tournament Staff.....	51
2.1	Tournament Referee	51
2.2	Court Supervisors.....	53
2.3	Chair Umpires.....	53
2.4	Adjudicators.....	54
2.5	Linespeople.....	54
2.6	Officiating Requirements	54
2.7	Conflict of Interest for Staff / Volunteers & Officials	56
2.8	Recruitment and approval of officials	56
3.	Matches played without a chair umpire.....	57
3.1	General rules.....	57
3.2	Matches played on Clay Courts	58
3.3	Etiquette.....	59

Section 3: Player related rules & regulations.....	60
1. Entry & Eligibility Rules	60
1.1 Eligibility.....	60
1.2 My Tennis Membership.....	61
1.3 Online Entry Requirement	61
1.4 Entry Information	61
1.5 Entry Deadline / Withdrawal Procedures.....	61
1.6 Entering two tournaments at the same time	62
1.7 Playing ‘in age’ at National and State Junior Championships	64
1.8 Entry Definitions.....	65
1.9 Acceptance Lists (for tournaments accepting all entries until the advertised entry closing date).....	66
1.10 Acceptance Lists (for tournaments accepting entries on a first-in, first-served basis until the advertised draw size has been filled).....	66
1.11 Acceptance List Ranking Ties.....	66
1.12 Administrative Error on Acceptance Lists.....	67
1.13 Doubles Entry	67
1.14 System of Merit – Singles	68
1.15 System of Merit – Doubles	68
1.16 Dress and Equipment	69
2. Withdrawals / Retirements / No Shows / Doubles Substitutions	69
2.1 Main Draw Singles (Elimination draw format) – Seeded Athletes.....	69
2.2 Main Draw Singles (Round Robin draw format) – Seeded Athletes.....	70
2.3 Qualifying Singles Draw.....	70
2.4 Main Draw or Qualifying Consolation.....	71
2.5 Main Draw Doubles.....	71
2.6 Vacancies and Substitutions	72
2.7 Doubles Withdrawals / Substitutions.....	72
2.8 Withdrawal Deadline and Withdrawal Procedures	74
2.9 Retirements / On-site Medical Withdrawal Procedures during tournament.....	76
2.10 No Show Procedures.....	76
2.11 Withdrawal from Australian Pro Tour or Australian ITF Junior Event.....	77
3. Scheduling.....	77
3.1 All events.....	77
3.2 Junior Tournament Time Restrictions	78
3.3 Rest Breaks.....	78
3.4 Warm-ups	78
3.5 Suspension of Play.....	79
3.6 Tournament Extension.....	79
4. Toilet Breaks / Change of Attire	79
4.1 Number and Nature of Breaks Allowed.....	79
4.2 Timing of Breaks	79
4.3 Denial of a request.....	80

5. Medical Conditions / Treatment	80
5.1 Priority of Care / Availability of Sports Physiotherapist or Doctor.....	80
5.2 Medical Condition.....	80
5.3 Treatable Medical Conditions	80
5.4 Non-Treatable Medical Conditions	80
5.5 Medical Evaluation	81
5.6 Medical Time-Out.....	81
5.7 Medical Treatment.....	82
5.8 Penalty	82
5.9 Bleeding	82
5.10 Vomiting.....	82
5.11 Physical Incapacity.....	83
5.12 Medical Treatment procedure for AMT/JT tournament without appointed Doctor/PHCP	84

Section 4 - Appendixes **85**

1. Australian Ranking Rules and Regulations.....	85
1.1 Eligibility.....	85
1.2 Ranking Calculation Method.....	85
1.3 Processing of the Australian Rankings.....	85
1.4 Athletes Responsibility.....	86
1.5 AR Sanctioned Tournaments	86
1.6 Conversion of International Ranking Points	86
1.7 Best eight (8) singles & best six (6) doubles results - regulations	87
1.8 Points Allocation	88
1.9 Submission of Australian Rankings to International Tennis Federation for ITF Pro Circuit and ITF Junior Circuit Acceptance Lists.....	91
1.10 Australian Ranking Points Allocation Tables	92
1.11 Protected Australian Ranking Policy.....	109
1.12 Amendments.....	111
2. Tennis Australia tournament conditions	112
2.1 Background.....	112
2.2 Conduct.....	112
2.3 Betting Activity	112
2.4 Spectator Behaviour.....	113
2.5 Membership.....	113
2.6 Publicity, Promotions and Use of Image	113
2.7 Filming and Photography	113
2.8 Medical Treatment.....	114
2.9 Medical Records.....	114
2.10 Privacy.....	115
2.11 Breach	115
2.12 Amendments.....	115

2.13	Athlete Management System Consent Conditions (relevant for TA run events only).....	115
3.	Athlete Management System Consent Conditions	116
3.1	Consent to Treatment	116
3.2	Consent to Collection and Storage of personal and health information.....	116
3.3	Application of Consents.....	116
3.4	Surveys.....	117
3.5	Term and Termination.....	117
3.6	Privacy.....	117
3.7	Release and Indemnity.....	117
3.8	Amendments.....	117
3.9	Participant Agreement.....	117
4.	Tennis Australia Extreme Weather Policy (updated July 2018)	118
5.	Tennis Australia Code of Behaviour	118
6.	Registered Assistance Dog – TA Policy.....	118

1. Purpose and Applicability

Tennis Australia circulates these Tournament Regulations for the purpose of providing fair and reasonable rules for the orderly and uniform conduct of Australian Ranking tournaments sanctioned by Tennis Australia. These Regulations shall be applicable to all Australian Money Tournaments (AMT's) and tournaments within the Junior Tournaments (JT's) that form part of the Australian Rankings circuit.

Additional tournaments sanctioned by member associations, club tournaments and other competitions may be conducted under these Regulations, in which case these tournaments must publicise these rules and regulations in their Tournament Conditions.

Any ambiguity or uncertainty in connection with these regulations shall be resolved by Tennis Australia acting reasonably. Tennis Australia reserves the rights to interpret these regulations when necessary in order to resolve particular or unusual circumstances. In addition it may be necessary to determine the most appropriate procedures to be utilised in special or unusual circumstances.

These rules and regulations take effect from January 1, 2019 and may be varied from time to time by Tennis Australia. Any new or revised policy, rule, procedure or regulation will be published on the Tennis Australia website (www.tennis.com.au) and/or notified to (a) tournament organisers and officials by email, and (b) Athletes as part of the tournament information provided pursuant to Section 3, paragraph 1.4 (Entry Information).

All persons participating in any way in an Australian Ranking Tournament (including Athletes, officials, staff, coaches, representatives, agents, medical staff, relatives and associates of an athlete, an athlete's entourage and spectators) must refrain from making comments, including to representatives of the media or through social media, that attack, disparage or criticise Athletes, organisers, officials or staff of Australian Ranking tournaments and/or Tennis Australia. Any failure or refusal to do so may be treated as a disciplinary matter and dealt with under the Tennis Australia Code of Behaviour.

Tennis Australia will also implement pilot activities and trials of rules at specific tournaments in 2019. These trials will be advertised by the tournament before commencement of play.

2. Regulation Compliance

2.1 By the Event

This document sets out the requirements for clubs/centres/associations to host an Australian Money Tournament (AMT) or Junior Tournaments (JT) event.

The following operating procedures for AMT and JT tournaments are designed to raise the quality of tournament conduct throughout Australia. They provide parameters to ensure all events sanctioned by Tennis Australia are managed professionally and with uniformity across the country and in so doing provide the most optimally positive playing experience for all athletes.

All JT and AMT tournaments must be conducted in accordance with, in their most current form the following procedures & regulations;

- the Uniform Tennis Anti-Corruption Program;
- the Tennis Australia Member Protection Policy;
- the Tennis Australia Code of Behaviour;
- and any other policy, rule, procedure or regulation of which Tennis Australia may notify the relevant club/centre/association from time to time.

In the event that these regulations do not cover a rule/procedure related item at an Australian Money Tournament or Junior Tournament, Referees and Tournament Directors should refer to

- The ITF Rules of Tennis (available via <http://www.itftennis.com/officiating/rulebooks/rules-of-tennis.aspx>)
- The ITF Duties and Procedures via <http://www.itftennis.com/officiating/rulebooks/duties-procedures.aspx>
- Tennis Australia Rules for non-umpired matches (<http://www.tennis.com.au/doc/tennis-etiquette-and-rules-for-non-umpired-matches>);
- Tennis Australia Dress & Equipment Regulations (Appendix 7);
- Tennis Australia's Anti-Doping Policy (available via <http://www.tennis.com.au/about-tennis-australia/reports-and-policies/policies>).

Penalties for failing to comply with the following requirements (as determined by Tennis Australia) may include;

- a) the downgrading of an event's Australian Ranking points status for the following year;
- b) withdrawal of any previously awarded Tennis Australia financial support;
- c) non-sanctioning of other events also planned to be run by the host organisation deemed to be in breach of these regulations;
- d) removal of previously granted sanction of subsequent events already gazetted to be hosted by the offending organisation; or
- e) financial penalties that can be determined at the discretion of Tennis Australia. These financial penalties must be paid before sanctioning for the following year will be considered.

2.2 By the Athlete / Parent

By submitting an online tournament entry form (or similar document) all tournament entrants and parents or guardians will be deemed to have read and accepted such policies, rules, procedures and regulations.

3. Categories of Tournaments

Tournaments will be classified annually by Tennis Australia into points/status levels, based on an evaluation of the relative success of that tournament in the previous year(s) whilst, and in addition including when considering the allocation of points/status levels to a new event, maintaining a geographical and population balance.

On the Australian Ranking circuit, there are four (4) categories of events –

- Platinum Series
- Gold Series
- Silver Series
- Bronze Series

AMT's will only have Australian Ranking points assigned to 'Open' singles and doubles and at select tournaments 18/u singles and doubles events. JT's will only have Australian Ranking points assigned to 12/u, 14/u, 16/u singles and doubles, and at select tournaments 18/u singles and doubles events.

CASE: Are AR points applicable to Specials, graded or mixed doubles events if conducted at the same tournament?

DECISION: No, AR points will not apply to Special, Graded or mixed events, etc. These ancillary events can be run in conjunction with an AMT or JT but in doing so, this must not compromise a AMT's or JT's ability to fulfill the requirements herein described that specifically relate to the conduct of the Australian Ranking events.

4. Complaints

In the event of a complaint in respect of an Australian Ranking tournament (including in relation to a Tournament Committee, Tournament Director, Referee, Chair Umpire, line/net umpire, Court Supervisor or coach), a written complaint may be lodged with the relevant Member Association and Tennis Australia at tournaments@tennis.com.au

Tennis Australia's Tournament and/or Integrity Departments will determine what further action, if any, should be taken, including referring the matter to another party such as, a club, a regional association or Tournament Committee and/or the TA/MA Disciplinary Officer (to be dealt with in accordance with the TA Code of Behaviour). For the avoidance of doubt, the results of all matches connected to the complaint will stand in any event.

5. Amendments

The 2019 Australian Ranking Tournament Rules and Regulations may only be amended, repealed or otherwise modified, in whole or in part, by Tennis Australia. Tennis Australia reserves the right to review and amend the AMT and JT Procedures and Regulations during the year, including with retrospective effect, where TA in its sole discretion deems the amendments to be in the best interest of the athletes and the AMT's and JT's. These amendments will be published on the Tennis Australia website <http://www.tennis.com.au/tournaments/regulations>

6. Miscellaneous / Contact Details

Where a matter arises for which provision has not been made in these Regulations, Tennis Australia will provide for the matter as it sees fit.

A ruling by a competent authority that any provision of the Regulations is invalid or unenforceable will not affect the legal enforceability of the Regulations as a whole. Instead, such provision will be replaced by Tennis Australia with a valid and enforceable replacement provision as close as possible in effect to the replaced provision.

Any questions concerning these Regulations can be addressed to Tennis Australia at:

Tournaments Department
Tennis Australia
Private Bag 6060
Richmond, Victoria 3121
Email: tournaments@tennis.com.au

2019 AR Tournaments Rules and Regulations

Any questions concerning the conduct of tournaments can also be addressed to Member Association staff at:

Member Association	Contact Name	Contact Phone	Contact E-mail
Tennis ACT	Lenka Greenhalgh	(02) 6160 7800	lgreenhalgh@tennis.com.au
Tennis NSW	<u>Matt Starr</u> <u>Susan Harris</u> <u>Roxanne Wain</u> (Officiating for NSW and ACT)	(02) 9024 7600	nswtournaments@tennis.com.au
Tennis NT	Erin Bormann	(08) 8981 5609	tournamentsnt@tennis.com.au
Tennis QLD	Marc Wittmann Emma Creighton Cheryl Jenkins (Officiating)	(07) 3120 7900	mwittmann@tennis.com.au ecreighton@tennis.com.au
Tennis SA	Ty Allen Breanna Hassam Darren Sahb (Officiating)	(08) 7224 8100	tallen@tennis.com.au bhassam@tennis.com.au dsahb@tennis.com.au
Tennis TAS	Matthew Scott	(03) 6108 8200	matthew.scott@tennis.com.au
Tennis VIC	Andrew Reynolds Shelly Hart Sof Megas (Officiating for VIC and TAS)	(03) 8420 8420	areynolds@tennis.com.au shart@tennis.com.au smegas@tennis.com.au
Tennis West	Loretta Hughes Christopher Crosby Jill Sheridan (Officiating)	(08) 6462 8300	lhughes@tennis.com.au ccrosby@tennis.com.au jsheridan@tennis.com.au

Section 1: Tournament Administration

1. Tournament Computer Software

1.1 Tournament Planner

The Tennis Australia approved software is Tournament Planner (TP). As part of its investment in tournaments, licenses are provided free of charge by Tennis Australia to the host clubs of Junior Tournaments and Australian Money Tournaments. Accordingly, this software must be used when conducting your tournament. This includes displaying the following information on the relevant tournament home page on <http://tournaments.tennis.com.au>.

- a) compiling the tournament fact sheet and displaying any specific tournament conditions on the tournament home page;
- b) displaying the draws and individual match times and schedule on the draws for each round within a reasonable time during the tournament after each day's play;
- c) entering all Athlete data listed in [Section 3, paragraph 1.4](#) (Entry Information) for all Athletes entered into the tournament (including non-AR events);
- d) regularly publishing results and key messages from the tournament on the website throughout the tournament period;
- e) updating the tournament acceptance list on a daily basis prior to the withdrawal deadline and release of the draws;
- f) refrain from criticising Tennis Australia / Member Associations / Athletes / officials or staff; or
- g) refrain from promoting software programs and websites that are in direct competition to the TP program or promote that Australian Ranking event draws and schedules are available on another software websites in direct competition to <http://tournaments.tennis.com.au>

NOTE:

- Failure to use the TP software will result in the tournament not being awarded Australian Ranking points.
- Completed TP files must be published onto the <http://tournaments.tennis.com.au> website within 12 hours of the tournament's completion.
- Failure to do this will result in a \$500 fine, which must be paid before consideration is given to host a sanctioned tournament in subsequent years. Further information on the functions of the TP software is available by contacting the tournament coordinator in your relevant Member Association office.

1.2 Online Payment Gateway – Stripe

Tennis Australia has now partnered with a new online gateway partner called **Stripe**. All tournaments utilising the Tournament Planner software system must register for a Stripe account when managing online payments for their tournament. If you have Stripe account questions, please email Stripe directly via support@stripe.com

Australian Ranking Tournaments are not permitted to use an alternative payment gateway system. If this occurs, sanctioning for the tournament will be removed.

1.3 Online Tournament Fact Sheet

Each Australian Ranking tournament must produce a pre-event online fact sheet. Tournaments must advertise the following relevant information in the fact sheet at least four (4) weeks prior to the entry closing date:

- a) Qualifying start and end dates;
- b) Main draw start and end dates;
- c) Entry Fees;
- d) Draw size restrictions for qualifying and main draw events;
- e) Tournament organisation contact details;
- f) Venue(s) location and contact details;
- g) Additional information relevant to the conduct of the tournament e.g. court surface;
- h) Whether artificial lighting is to be used for play
- i) Other relevant tournament information that is applicable to promote

2. Tournament Staff

2.1 Tournament Committee

The Tournament Committee will be responsible for the organisation and administration of the Australian Ranking tournament. We recommend that the Tournament Committee is appointed at least three months before the commencement of the tournament. The Tournament Committee should consist of the following people:

- Tournament Director
- Two members of the host tennis club

The Tournament Committee should report to the Host Club Committee and Tournament Referee at regular intervals leading up to the commencement of the tournament.

In particular, the tournament committee must:

- a) Submit a tournament sanctioning application form (available by contacting the relevant Member Association) to Tennis Australia each year by the date specified by TA for approval by TA;
- b) Submit a tournament match plan to Tennis Australia and the relevant Member Association when applying for the tournament.
- c) Be responsible for providing to TA (accurately and in accordance with any deadline imposed by TA or MA) all relevant dates in respect of the tournament (including at least the deadlines for entry, the start date and finish date of qualifying and main draw in order that TA can publish such dates on the TA website;
- d) Support the Referee in, but not interfere with, the proper execution of his/her duties;
- e) Decide upon matters arising out of the day-to-day running of the tournament save for those matters to be decided by the Referee pursuant to [Section 2 paragraph 2.2 \(Tournament Referee\)](#), and/or decide on any matter at the request of the Referee;
- f) Ensure that suitable facilities are available at the tournament site and/or at additional locations for the completion of the scheduled events, assuming reasonable weather conditions;
- g) Ensure that suitable ancillary facilities, such as toilets, are available at the tournament site and any additional locations;

- h) Be responsible for health and safety and child welfare/protection at the tournament and for the keeping of good order on the tournament site;
- i) Ensure that all tournament venues are affiliated with the relevant Member Association;
- j) Be bound by these Rules and Regulations and the Tennis Australia Code of Behaviour.

2.2 **Tournament Director**

The club/association or tournament committee shall designate a Tournament Director to administer the tournament. He/she must be fully aware of the responsibilities of his/her position.

The Tournament Director must agree to:

- a) Be on-site throughout the whole tournament, or appoint a capable deputy if circumstances arise when the tournament director must be away from the venue;
- b) NOT be an active participant in the event
- c) In preparation of the event,
 - Ensure a complete fact sheet is produced and appropriately displayed on the TA website and that this fact sheet is accurately modified if and when required
 - Be responsible for promotion of the event (in conjunction with the Tournament Committee)
 - Set up, in full, a TP file or draws for the event and send this file via email to the Referee

NOTE: It is primarily the responsibility of the TD to maintain the accuracy of the TP file, but the duty of the Referee to verify this is the case.

- Forward to the Referee a copy of the Acceptance List where one is produced separate to the TP file
- Ensure the TP file is republished regularly to publically reflect changes to the Acceptance List
- Ensure that any Athlete who withdraws after the Withdrawal deadline is placed into the "Exclude" roster of the TP file and that an appropriate note is added to the file to explain the reason for the late withdrawal and the precise instructions given to the Athlete in so far as providing substantiation for the late withdrawal
- d) During the event
 - Maintain the TP file during play ensuring all results are input accurately throughout the day
 - Ensure that the TP file is republished regularly during each day's play or at least at the end of every day's play
 - Ensure the TP file is republished during play to reflect changes in match times as a result of new 'Not Before' times or where there have been significant delays due to weather interruptions
 - Ensure they do not go on court during a match (including warm-up) in order to make any decisions based on rules or procedures, or otherwise become involved in any Code of Behaviour matter;
 - Be responsible for the administration of the tournament office
 - Be responsible for the payment of prizemoney (where appropriate)
- e) In conjunction with the Referee,
 - Be responsible for the tournament's compliance with all rules and regulations and minimum standards as directed by Tennis Australia
 - Be involved in making, approving, and where necessary altering the draws subsequent to withdrawals or administrative errors

NOTE: Draws shall not be published (or re-republished in the case of any subsequent alterations) without express approval and consent of the Referee.

- Be responsible for creating and releasing Orders of Play both before and during a tournament
- Be responsible for posting and updating draws and Orders of Play on a Public Noticeboard on site
- Be responsible for keeping Athletes informed of delayed match times due to weather or other unforeseen circumstances as well as revised "Not Before" times.

NOTE: The referees should be primarily responsible for DETERMINATION of 'Not Before' times

- Be ready to assist in solving any issues related to the organisation of the tournament, athletes, coaches, officials, media and spectators;
 - Maintain a continuous dialogue with the Tournament Referee about the day to day conduct of the event and submit a report to Tennis Australia and the relevant Member Association evaluating the Tournament;
 - Allocate matches to courts in conjunction with the referee.
- f) After the event
- Submit a report to Tennis Australia and the relevant Member Association evaluating the Tournament;
 - Ensure the TP file is complete including all scores
 - Ensure the final TP file (or summary of codes and draws) is reviewed by the Referee and upon the Referee's endorsement of the completeness and accuracy of the file, ensure it is emailed to the relevant Member Association and Tournament Referee
 - Ensure all necessary entry fee refunds are appropriately processed

2.3 Sports Physiotherapist and Tournament Doctor

- **Platinum AMTs & JTs:** Mandatory Requirement for duration of the tournament
- **Gold and Below AMTs & JTs:** Recommended

For all Platinum AMTs and JTs, a qualified Sports Trainer or Sports Physiotherapist must be onsite and accessible for the duration of play for sole use of the competing athletes (including qualifying). All other AMTs & JTs are encouraged to provide a qualified Sports Trainer or Sports Physiotherapist. At an event where there is no Sports Physiotherapist, an appropriately stocked first aid kit should be available. The tournament is required to provide details of the nearest doctor and hospital to all athletes during the event, upon request.

2.4 Stringer

A stringer on site at the main host venue is a requirement for the duration of the tournament for Platinum JTs and Platinum AMTs. This requirement is recommended for all other tournaments.

Pricing must have two categories, one for Athletes providing their own string and the other for Athletes not providing string. In the instance where a stringer cannot remain on-site, the tournament must have a suitable alternative through which racquets requiring attention can be promptly re-strung and returned to the Athlete in a timely manner.

3. Facilities and On-site Conditions

3.1 Courts / Venues

Australian Ranking tournaments are approved to be played on any one of the below court surfaces –

- Plexicushion
- Hardcourt / Cushioned Hardcourt
- En-Tout-Cas
- Clay
- Synthetic Grass / Classic Clay
- Natural Grass
- Indoors – Either hardcourt or synthetic grass

NOTE: Tennis courts with blended hot shot court lines are satisfactory for use for Australian Ranking tournaments.

Tournaments must conduct the entire event on the same advertised surface, however, the same event can be played across multiple venues. For the purposes of this rule, the qualifying draw and main draws are considered the same event, whilst the consolation events are considered separate and can each be played on a different surface.

CASE: The tournament venue has both synthetic grass and hardcourts at its venue. Can they use both surfaces to conduct the tournament?

DECISION: In the first instance, the primary focus of any event should be to complete all matches on hardcourt. When the match load does not allow this, the event should make every effort to play qualifying and main draw matches on hardcourt, and where necessary only use other surfaces for consolation. It should, however, always be the primary objective of the tournament to complete all consolation matches on the same surface as the main draw. Accepting more entries than available match courts is not an excuse to play main draw matches on different surfaces.

CASE: What if the tournament is severely affected with weather delays and has to change surface mid-way through a tournament?

DECISION: A tournament severely affected by weather delays can change court surfaces if they believe it will help the tournament to finish on time. Once this decision is taken, the Referee must inform the relevant Member Association or Tennis Australia via email: tournaments@tennis.com.au. This also applies to moving matches indoors when facilities allow. But the event should resume on the originally advertised surface if and when they again become available at the discretion of the Referee.

3.2 Court Equipment

Tournament Committees and the Tournament Director in consultation with the Referee must ensure that all tournament venues are satisfactory and safe for match play.

The following is required:

- Nets in good order and able to be easily adjusted;
- Net straps securely attached to the court surface;
- Singles sticks;
- Athlete seating;

- Suitable and safe umpires chairs (seat of the umpires chair 6-8 ft. above the court surface);
- Safe and effective fencing;
- Safe and playable court surface;
- Appropriately padded light poles where necessary; and
- Squeegees in good condition and supply

The following is recommended:

- Scoreboards (highly recommended)
- Two-Way radios in good condition and supply (recommended)
- Umbrella's or shade structure for athletes on court (recommended)

3.3 Warm-up / Practice Courts

Tennis Australia recommends for tournaments to open their venues free of charge to tournament athletes at least one hour prior to the start of scheduled matches for warm-ups.

There is no requirement to provide practice courts at the venue once matches have started for the day, but Tennis Australia encourages venues capable of providing practice courts, either on-site at the venue or off-site within a close proximity to do this and to provide this as a benefit to competing athletes at no extra charge.

3.4 Artificial Lighting

Play is allowed under lights at the discretion of the Referee. It must be communicated during the entry process either in the tournament conditions or fact sheet that it is the tournaments intention to play matches under lights as part of normal tournament scheduling or if the tournament experiences scheduling difficulties or inclement weather. The final decision to play or complete matches under lights will be at the discretion of the Referee.

NOTE: For Platinum AMTs, the minimum average lux. Reading is 350 in nine (9) positions around the court.

3.5 Venue Appearance and Amenities

- a) Present a venue that is safe, neat and tidy. This includes the following areas –
 - Entrance.
 - Gardens and grounds.
 - Courts and surrounds.
 - Clubhouse and equipment.
 - Change rooms, showers and toilets.
 - Noticeboards.
 - Tournament office (which is to be staffed at all times during the day's play).
 - Venues must provide an appropriately stocked first aid kit at each venue.

3.6 Sponsorship / Advertising / Branding

Each AMT and JT tournament shall identify itself clearly to the public as being part of the Australian Ranking circuit and shall cooperate fully with Tennis Australia and its Member Associations in furthering public awareness of the Australian Ranking circuit. Participation in the Australian Ranking circuit as an AMT or JT event shall not restrict the right of the tournament to obtain individual sponsorship or to retain its usual title.

Tennis Australia has the right to brand nets, courts and venue surrounds if it so chooses. Signage kits may be provided, without cost, to all tournaments by Tennis Australia.

3.7 Canteen

It is strongly recommended that a canteen at the main tournament venue be open throughout the day (particularly for athletes involved in evening matches, who may need to eat after playing) where athletes can buy various types of food and drink suitable for athletes at a reasonable cost. The canteen service should adhere to the following criteria –

- Healthy and nutritious options, and
- Professional level hygiene and food handling processes.

3.8 Signage

Banners behind the court must not be white or yellow (off-white and grey banners are permitted).

3.9 Internet Access

It is a requirement that the main tournament venue have access to the Internet within the main tournament office. If multiple venues are used, Tennis Australia recommends a temporary internet connection (e.g. portable USB modems) be available to allow for simple transfer of data to and from the main venue.

3.10 Changerooms

Suitable change rooms must be available at the main tournament venue. Facilities must include toilets and showers (cleaned regularly throughout the day) and an adequate supply of toilet paper and soap.

3.11 Sports Physiotherapist Treatment Room

A separate treatment room for the Sports Physiotherapist must be made available preferably located near the courts for each day (including qualifying). Alternatively a partitioned area (for privacy reasons) of the locker room or clubhouse may be suitable provided this is well ventilated and of a suitable temperature.

4. Tournament Planning

4.1 Pre-Tournament Commencement Timetable

Tennis Australia recommends that the following timeline should be followed when conducting an Australian Money Tournament or Junior Tournament events – please note the exemptions below:

Action	Timeline - AMT	Timeline – JT
Tournament Entries Open online	6 weeks prior to scheduled tournament start	6 weeks prior to scheduled tournament start
Closing Date for Entries	10 or 14 Days prior to scheduled tournament start	10 or 14 Days prior to scheduled tournament start
Acceptance List Released	9 - 13 Days prior to scheduled tournament start	9 - 13 Days prior to scheduled tournament start
Wildcard Application Closing Date	10 Days prior to scheduled tournament start	Not Applicable for application
Withdrawal Deadline	7 Days prior to scheduled tournament start	7 Days prior to scheduled tournament start
Updated Acceptance List Released	7 Days prior to scheduled tournament start	7 Days prior to scheduled tournament start
Seedings List released back to MA	5 Days prior to scheduled tournament start	5 Days prior to scheduled tournament start
<u>Finalise Doubles Pairings</u>	<u>5 Days prior to scheduled tournament start (maybe later if doing sign-in doubles event)</u>	<u>5 Days prior to scheduled tournament start (maybe later if doing sign-in doubles event)</u>
Qualifying Draw Released (if required)	3 days before start of qualifying	3 days before start of qualifying
Main Draw Released (if there is no Qualifying)	3 days before start of main draw	3 days before start of main draw
Main Draw Released (if there is Qualifying)	1 -3 day before start of main draw	2-3 days before start of main draw

- **Exemptions to the 4.1 table above**

- JT Platinum Series (National Junior Championships) events will close 28 days prior to the start of qualifying of the tournament.
- Where a Platinum AMT is held the same week as an Australian Pro Tour event, the qualifying and main draw will not be released until the day before the relevant AMT event is scheduled to begin.

Every effort should be made to schedule AMTs so that they do not begin until qualifying of the overlapping Pro Tour Qualifying event is complete.

In this instance, any athlete who remains committed to the preceding Pro Tour event at the time that the AMT draw is due to be released, must NOT be included in the AMT draw.

Where an AMT overlaps with the Main Draw of a Pro Tour event, the AR “Entering two tournaments at the same time” rule applies. No athlete shall be able to play and lose a Pro Tour

match and in so doing end their commitment to that Pro Tour event and then compete in an overlapping AMT on the same day.

- c) Special regulations may apply to AMT/JT Platinum held during the December Showdown, in which case these regulations will be advertised prior to the tournament via the event fact sheet

CASE: An athlete entered late and was granted a qualifying wildcard into the tournament. If they qualify, their Australian Ranking will most likely allow them to be seeded in the main draw. Does a tournament need to wait until the qualifying event is finished before making the main draw?

DECISION: If the tournament has the ability to wait until the qualifying event is finished, that is preferred. However, if the tournament is unable to wait for the qualifying event to finish, the qualifying Athlete can be slotted into a random line where a qualifier position has been allocated.

4.2 Event Structure at Tournaments

There is an expectation that clubs, associations and commercial operators that commit to hosting an Australian Ranking tournament undertake sufficient planning prior to their tournament, especially in regards to the event structure of their tournament.

- (a) Tennis Australia and the relevant Member Association sanction tournaments to host a combination of 12/u, 14/u, 16/u, 18/u and AMT events, which is advertised on the yearly tournament calendar. Tournaments may choose to hold other events (e.g. 10/u, mixed doubles or social events) in addition to what has been sanctioned.
- (b) It is highly recommended that tournaments only permit athletes to enter one singles and one doubles event of the same age group. With the approval of the relevant Member Association and/or Tennis Australia in conjunction with the tournament committee, an athlete may enter and play in two (2) Junior Tournament age groups at the same tournament. In this instance, athletes eligible for AR points in more than one age group will have the higher number of points awarded – not both. An athlete may only enter one AR doubles event at the one tournament.
- (c) Tournaments should ensure they have the capacity to deliver the number of events they have advertised. If they don't, they should hire more venues to play the matches or restrict the number of entries they accept. Reducing match scoring formats is not an acceptable method of dealing with overcapacity issues.

4.3 Tournament Match Plan

All Australian Ranking tournaments are required to submit a tournament match plan during the tournament sanctioning period, which details the following:

- Number of matches per event
- Number of matches per day per event
- Minimum number of courts required to complete the total number of matches each day
- Scoring format being used for each event

There are various formats and calculations that tournaments can use to display their tournament match plan, but tournaments should be investigating the use of additional venues or accepting a limited number of entries per event if their match plan is exceeding more than eight (8) matches per court for the day (if the majority of matches are playing the best of three tie-break sets).

The Tournament Director must share the Tournament Match Plan with the Tournament Referee as soon that he/she is advised of his/her appointment.

The matchplan should be reviewed by the Tournament Director in conjunction with the Tournament Referee after the entry deadline is closed.

5. Financial

5.1 Entry Fees

- a) Australian Money Tournaments can charge an entry fee of a maximum of \$75.00 for a singles event and a maximum of \$35.00 for a doubles event (per Athlete).
- b) Junior Tournaments can charge an entry fee of a maximum of \$65.00 for a singles event and a maximum of \$30.00 for a doubles event (per Athlete).

NOTE: JT Platinum tournaments can charge an entry fee of a maximum of \$150.00 for singles, whilst doubles events are free of charge due to the compulsory participation requirement.

NOTE: There must not be additional entry fees charged for consolation events.

Players with unpaid entry fees after the entry deadline will not be accepted into the tournament.

These maximum fees are inclusive of any Member Association sanction fee that is required to be paid per Athlete and also includes any online processing fee charged by Stripe.

Tournaments charging the maximum fee for their tournament are obligated to provide all requirements and benefits to Athletes as outlined within these rules and regulations.

NOTE #1: Tournaments have the right to refuse an entry if the payment is not made. It is recommended that all Athlete entry fees are collected prior to an athlete stepping onto court for their first match of the tournament.

NOTE #2: Tennis Australia and its Member Associations will encourage clubs and associations to offer early-bird entry-fee promotions during 2019, as well as other pricing strategies.

5.2 Entry Fee Refunds

AMT and JT Entry refunds will be processed by tournaments based on the following sliding scale:

- a) Any withdrawals before the 7-day withdrawal deadline will be issued a full refund of their entry fee.
- b) Any withdrawals after the 7-day withdrawal deadline, but before the release of the draw will be issued a refund of 50% of their entry fee.
- c) Withdrawals after the release of the draw will not be entitled to any refund of their entry fees
- d) Any athlete who has "no showed" or is found to have played two overlapping tournaments without approval will not have their entry fee refunded.
- e) Any athlete that has entered two overlapping tournaments but is required to withdraw and has contacted the overlapping tournament within the required time will be refunded their entry fee, less an administration fee of \$10.00.
- f) Any athlete entering a doubles event without a partner and has to subsequently withdraw due to not being able to find a partner before the release of the draw will be entitled to a refund of 50% of their entry fee. Where a doubles partner can be found to replace a withdrawing partner and the remaining partner chooses not to play, no refund shall be required to be paid.

All withdrawals must be submitted by the athlete in writing. Tournaments need not issue a refund if the withdrawal procedure is not followed.

Refunds, less a \$10.00 administration fee must be issued if a tournament is cancelled (due to weather or other extenuating reasons) before the completion of an athlete's first match within that tournament.

6. Draws

6.1 Making the Draws

a) Referee Approval

The draw will not be official and must not be published unless approved by the Tournament Referee.

b) Time of Draw

- **Australian Money Tournaments**

If an AMT is played during the same week of an Australian Pro Tour, the draw and match schedule must not be released until the day before. However, a provisional schedule should be released prior to this time.

For all other AMTs, see the pre-tournament commencement table (Refer to section 1, paragraph 4.1).

- **Junior Tournaments**

For JT's, see the pre-tournament commencement table (Refer to section 1, paragraph 4.1).

6.2 Draw Formats and Sizes

Australian Money Tournaments

1. Main Draw Singles

- The main draw will be an 'elimination draw' format only
- The maximum draw sizes for each Australian Money Tournament will be as follows:
 - Platinum – 16 Main draw / Up to 64 Qualifying
 - Gold – Up to 32 Main draw / Up to 64 Qualifying
 - Silver – Up to 32 or 64 Main Draw / Up to 128 Qualifying
 - Bronze – Up to a 128 Main Draw / Up to 64 Qualifying
- Tournaments reserve the right to extend the size of the main draw (by one draw size only) when total entries only marginally exceed the originally advertised Main Draw size and in so doing not conduct a qualifying event.
It must be emphasized that such an extension is OPTIONAL and should be decided upon after consultation between the event and the Referee. The relevant MA should be advised of a change in advance of the start of the event. For Platinum AMT events, the relevant MA must approve such an extension before it is done.

Extensions will only be allowed as per the following:

Originally advertised Draw size	Actual entries received	New Draw size
16	<u>17-19</u>	<u>24 with byes (no Quals)</u>
24	<u>25-31</u>	<u>32 with byes (no Quals)</u>
32	33-39	48 with byes (no Quals)
48	49-55	64 with byes (no Quals)
64	65-71	96 with byes (no Quals)

Note: If a Main Draw size extension occurs, athlete's that have played only one or two matches must be allowed to sign in for Main Draw Consolation

Note: If a Main Draw size extension occurs, the onus is on the Tournament to advise all entrants that the Main Draw may, as a result, be likely to commence a day earlier than originally advertised

Draw Size	16	24	32	48	64	96	128
Direct Acceptances	10	12	20	32	48	80	114
Qualifiers*	4	8	8	8	8	8	8
Wildcards*	2	4	4	8	8	8	8

* - If qualifying is not played or wildcards are not issued, these positions are to revert back to Direct Acceptances

2. Qualifying

- The qualifying singles draw should have a minimum of five (5) athletes when there are 4 qualifying positions available and a minimum of nine (9) athletes where there are 8 qualifying positions available and a maximum of a 128 athletes and will also be played with an "elimination" style format.
- The maximum size of the qualifying draw must be announced when entries open.
- The qualifying event must always be played using the standard "qualifying" draw format. Refer to section 1, Paragraph 6.3 – Qualifying Draw Structure.
- Places for Wildcards will be available in AMT Qualifying draws as per the table below.

NOTE: If the maximum number of available Wildcards are not awarded or where a wildcard withdraws before the qualifying commences and no replacement wildcard is announced, the available place in the qualifying event will revert to the next person on the qualifying acceptance list

Qualifying Singles – AMTs

Draw Size	16	24	32	48	64	96	128
Qualifying Acceptances	14	20	26	41	56	88	120
Wildcards*	2	4	6	7	8	8	8

* - If wildcards are not issued, these positions are to revert back to Qualifying Acceptances

3. Pre-qualifying

- Pre-Qualifying or Qualifying wildcard events can be sanctioned for historically popular events, if required, but only with prior approval of the Member Association.
- The maximum match length for this event should be two sets and a deciding match tie-break, and be scheduled in such a way to ensure matches can be completed within one day.
- The number of available places in the qualifying events for successful pre-qualifying athletes must be advertised in advance of the pre-qualifying commencing but should not exceed four (4) places

4. Doubles

- a) The maximum amount of doubles teams accepted at all levels of AMTs is 64 teams. However, Platinum AMTs can have a doubles event of no larger than 24 teams.
- b) No doubles qualifying draw is allowed unless with prior approval of Tennis Australia in which case there must be strict agreement on the maximum size of the qualifying doubles and the number of qualifiers. This must be reflected in the event Fact Sheet when published.
- c) To be awarded Australian Ranking points, doubles draws must be played using a “single elimination” format. If a round-robin is required due to low entry numbers (4 teams or less) than Australian Ranking points will only be awarded to the Winners and Finalists.

Main Draw Doubles – AMTs

Draw Size	8	16	24	32	48	64
Direct Acceptances	7	14	20	28	42	56
Wildcards*	1	2	4	4	6	8

* - If wildcards are not issued, these positions are to revert back to Direct Acceptances

5. Consolation Draws

- a) Providing the option of a consolation singles event is compulsory at all AMTs, but participation is at each eligible individual athlete’s discretion.
- b) Entry is to be via an on-site sign in (although the Referee reserves the right to accept timely telephone sign-ins).
- c) The main draw and qualifying consolation events are to be run independently.

Main Draw Consolation

- i. For a 16 athlete main draw, the first round losers only will be eligible to sign in for the consolation event, noting where an athlete has a bye or a walkover in the QF round they may also sign-in for consolation.
- ii. For a 24, 32, 48 and 64 athlete main draw, the first and second round losers will be eligible to sign in for the consolation event.

Note: Where a Main Draw size extension has occurred, losers in the first three rounds of the Main Draw will be eligible to sign in for Main Draw Consolation

- iii. For a 96 athlete main draw and above, losers in the first three rounds will be eligible to sign in for the consolation event.

Sign-in is to close five (5) minutes after the conclusion of the last second round main draw singles match.

Qualifying Consolation

- i. Irrespective of the size of the qualifying draw, only athletes who lose in the first two rounds of the qualifying, whether the first round has all available places filled or not, shall be eligible to play.
- ii. Sign-in is to close five (5) minutes after the conclusion of the last match in the second round of the qualifying event.
- iii. Athletes who lose in qualifying or qualifying consolation cannot also play in the main draw consolation. However, athletes that accept a lucky loser position in the main draw after already competing in the qualifying consolation must be taken out of the qualifying consolation as soon as the position becomes available and placed into the

main draw, including stopping a match already in progress. This will allow this athlete to be eligible for the main draw consolation.

CASE: An athlete receives a Bye in the first round of qualifying and advances to the third round due to a “no show”. Can this athlete, if they subsequently lose their third round match be allowed to sign in for the consolation event?

DECISION: If this does not unfairly delay the release of the Consolation draw and schedule, then at the discretion of the Referee this can occur. In principle, if this is possible, every effort should be made to include Athletes into the consolation if they lose their first actual match played as long as this does not unfairly affect the schedule.

Junior Tournaments (JT)

1. Main Draw

- a) Main Draw Singles events can be conducted with either an ‘elimination’ or “round robin” format but this must be announced when entries open. See below Junior Tournaments section 4 (consolation) for additional information.
- b) The maximum draw sizes for each Junior Tournament will be as follows:
 - Platinum (Australian Championships) – 64 Main draw / State Qualifying (12/u & 14/u)
 - Platinum (Australian Championships) – 32 Main draw / 32 Qualifying (16/u only)
 - Platinum (Australian Championships) – 16 Main draw / 16 Qualifying (18/u only)
 - Platinum – 32 Main draw / No Qualifying (12/u & 14/u Grasscourt & Claycourts)
 - Gold – Up to 32 Main draw / Up to 64 Qualifying
 - Silver – Up to 64 Main Draw / Up to 128 Qualifying
 - Bronze – Up to a 128 Main Draw / No Qualifying
- c) Tournaments of Silver or below status reserve the right to extend the size of the main draw when total entries only marginally exceed the originally advertised Main Draw size and in so doing not conduct a qualifying event.

It must be emphasized that such an extension is OPTIONAL and should be decided upon after consultation between the event and the Referee. The relevant MA should be advised of a change in advance of the start of the event.

Extensions will only be allowed as per the following:

Originally advertised Draw size	Actual entries received	New Draw size
16	17-19	32 with byes (no Quals)
24	25-31	32 with byes (no Quals)
32	33-39	48 with byes (no Quals)
48	49-55	64 with byes (no Quals)
64	65-71	96 with byes (no Quals)
96	97-103	128 with byes (no Quals)
128	129-135	As Required

NOTE: If a Main Draw size extension occurs, losers in the first three rounds must be allowed to sign in for Main Draw Consolation

NOTE: If a Main Draw size extension occurs, the onus is on the Tournament to advise all entrants that the Main Draw will be likely to commence a daily earlier than originally advertised

Draw Size	16	24	32	48	64	96	128
Direct Acceptances	10	12	20	32	48	80	114
Qualifiers*	4	8	8*	8*	8*	8*	8*
Wildcards*	2	4	4*	8*	8*	8*	8*

* - If qualifying is not played or wildcards are not issued, these positions are to revert back to direct acceptances

NOTE: Tournaments may only issue main draw wildcards into JT events for internationally based athletes with the prior approval of Tennis Australia. If these wildcards are not used, these positions revert back to direct acceptances.

NOTE: Regional Tournaments may only issue main draw wildcards into JT events for locally based athletes with the prior approval of the respective Member Association. If these wildcards are not used, these positions revert back to direct acceptances.

NOTE: The Round-Robin format should only be used if the tournament is limiting the size of the main draw to 16 or 32 Athletes.

OPTION A: Elimination draws with preceding qualifying event

- a) 16 athlete Main Draw
- b) 24 athlete Main Draw
- c) 32 athlete Main Draw
- d) 48 athlete Main Draw
- e) 64 athlete Main Draw
- f) 96 athlete Main Draw
- g) 128 athlete Main Draw

NOTE: Gold events must be a 32 Main Draw. Silver & below events can choose to have an open draw of between 16 to 64 Athletes or a larger main draw size with qualifying in consultation with their Member Association

OPTION B: Round robin format with preceding qualifying pool winners advancing to a knock out playoff draw. Refer to Section 1 paragraph 6.4 – Round Robin Draw Structure.

- a) 4 pools of 4 Athletes format (16 Athlete total).
- b) 8 pools of 4 Athletes format (32 Athlete total).

NOTE: In both (a) and (b), the winners of each pool advance to the knockout elimination stage of the event.

NOTE: The conduct/specific rules of the round robin main draw are described later in these rules.

Main Draw Playoffs

- It is mandatory in all JT main draws for a playoff match to be played between the losing singles semi-finalists for third place whether using Option A or Option B above.
- It is mandatory in all Platinum and Gold JT main draws for playoff matches to be played between the losing quarter-finalists to determine places five (5) to eight (8).

2. Qualifying

- The qualifying event must always be played using the standard “qualifying” draw format. Refer to section 1, paragraph 6.3 – Qualifying Draw Structure. Wherever possible the planned size of the qualifying draw must be announced when entries open and should be predicated on the availability of days and courts for the event.
- The number of qualifier positions available in the main draw will be equal to the number of round robin pools to be used in the main draw, or as described above for elimination style main draw formats.
- The qualifying singles draw must have a minimum of five (5) athletes when there are 4 qualifying positions available and a minimum of nine (9) athletes where there are 8 qualifying positions available and, in both cases, a maximum of a 128 athletes.

Qualifying Singles – JTs

Draw Size	16	24	32	48	64	96	128
Qualifying Acceptances	14	20	26	41	56	88	120
Qualifying Wildcards* (Refer to Notes)	2	4	6	7	8	8	8

* - If wildcards are not issued, these positions are to revert back to qualifying Acceptances

NOTE: Tournaments may only issue qualifying wildcards into JT events for internationally based athletes with the prior approval of Tennis Australia. If these wildcards are not used, these positions are to revert back to qualifying acceptances.

NOTE: Regional Tournaments may only issue qualifying wildcards into JT events for locally based athletes with the prior approval of the respective Member Association. If these wildcards are not used, these positions revert back to direct acceptances.

3. Pre-qualifying

- Pre-Qualifying or Qualifying wildcard events can be sanctioned for historically popular events, if required, but only with prior approval of the Member Association.
- The maximum match length for this event should be two sets and a deciding match tie-break, and be scheduled in such a way to ensure matches can be completed within one day.
- The number of available places in the Qualifying events for successful pre-qualifying athletes must be advertised in advance of the pre-qualifying commencing but should not exceed four (4) places

4. Junior Tournament Consolation

In 2018, tournaments in Victoria, New South Wales and the Northern Territory conducted trials on optional consolation events.

In 2019, a tournament will be required to advertise prior to the start of the tournament whether they are implementing a compulsory or optional sign-in participation consolation events in JT age groups (12/u, 14/u and 16/u).

Victoria, New South Wales and the Northern Territory are the only states/territories to commit to trailing or fully adopting optional consolation events. Other states/territories may adopt/change in 2019, but at the time of publication, this has yet to be determined.

As in previous years, consolation events for the 18/u age group of JT's will be a non-compulsory sign-in event

Qualifying and main draw consolation sign-in is to close five (5) minutes after the conclusion of the last relevant round match.

Main Draw Consolation

- a) Only for competitors who lose when the event uses the elimination main draw format.
- b) For a 16 athlete main draw, the first round losers only are eligible to compete in the consolation event unless otherwise excused by the Referee.
- c) For a 32 athlete main draw, the first and second round losers are eligible to compete in for the consolation event unless otherwise excused by the Referee.
- d) For a 64 athlete main draw and above, losers in the first three rounds are eligible to compete in for the consolation event unless otherwise excused by the Referee.
- e) There is no Main Draw consolation when the Round Robin Main Draw format is used.

Note: Where a Main Draw size extension has occurred, losers in the first three rounds of Main Draw will be eligible to sign in for Main Draw Consolation

Qualifying Consolation

- a) With one exception, irrespective of the size of the qualifying draw, only athletes who lose in the first two rounds of the qualifying, whether the first round has all available places filled or not, shall be eligible to play. Where there are 6 or less matches in the first round of qualifying the referee and the TD (in consultation with the MA) may choose to allow a 3rd round of losers signing in for consolation where it will not unduly hold up the schedule and where they believe they will be able to reasonably fit the additional matches in.
- b) Athletes who lose in the first two rounds of qualifying will be automatically placed in the qualifying consolation draw and athletes must compete unless otherwise excused by the Referee.
- c) Athletes who lose in qualifying or qualifying consolation cannot also play in the main draw consolation. However, athletes that accepts a lucky loser position in the main draw after already competing in the qualifying consolation must be taken out of the qualifying consolation as soon as the position becomes available and placed into the main draw, including stopping a match already in progress. This will allow this athlete to be eligible for the main draw consolation.

5. Doubles

- a) There will be a maximum of between 16 to 32 teams accepted into a Platinum JT doubles event. The exact size will be announced on the tournament fact sheet.

- b) The maximum amount of doubles teams accepted at other levels of JTs is 64 teams.
- c) Any decision by a tournament to play a smaller restricted doubles event must be approved by Tennis Australia and the relevant Member Association and be advertised on the fact sheet when entries or sign-in is opened.
- d) No qualifying doubles draws are permitted.
- e) To be awarded Australian Ranking points, doubles draws must be played using a “single elimination” format. If a round-robin is required due to low entry numbers than Australian Ranking points will only be awarded to the Winners and Finalists.

Main Draw Doubles – JTs

Draw Size	8	16	24	28	32	48	64
Direct Acceptances	8	16	24	28	32	48	64

Please note: Platinum JTs can have a doubles event of either 16, 24 or 32 teams.

CASE: What happens if more doubles team enters than there are places available in the draw?

DECISION: First, teams are accepted into the main draw field based on the System of Merit (see Section 3, Paragraph 1.13), thereafter, if more teams enter than there are places available, then the event should have a doubles alternate sign-in which should follow the same guidelines as the singles Lucky Loser procedures.

6.3 Qualifying Draw Structure

a) Sections

The qualifying draw shall be made in sections, and the winner of each section shall be given a place in the main draw, as determined by lot. Positions of the various qualifiers may be pre-allocated in the main draw, but the final position of each individual qualifier must be determined by random lot into the available places in the main draw.

If four (4) qualifiers are required, there shall be four (4) sections; eight (8) qualifiers, eight (8) sections. The draw shall be seeded and the selection of seeds shall be based on the most recent available and complete Australian Rankings list, notwithstanding exemption rules. Each Section shall have two (2) seeded Athletes provided sufficient Athletes have an Australian Ranking.

b) Placing seeds/Method of draw

The first seed shall be placed at the top of the first section; the second seed shall be placed at the top of the second section and so on until all sections have one (1) seed on the top line.

The remaining seeds shall be drawn as a group. The first drawn shall be placed on the bottom line of the first section, the next drawn at the bottom of the second section, and so on until all sections have one (1) seed on the bottom line.

If there is not a sufficient number of ranked athletes to fill all the positions for seeds in the draw, the section(s) with the highest seeds shall not have a second seeded athlete

c) Byes

If there are not enough athletes to fill the qualifying draw, then after the seeds are placed in the draw, the required number of byes shall be awarded to the highest seeds as a first priority and any remaining byes shall be drawn in a manner so as to distribute them as evenly as possible throughout the sections of the draw.

d) Remaining Athletes

The remaining unseeded athletes shall be randomly drawn and placed in the vacant places in the draw beginning at the top of the draw.

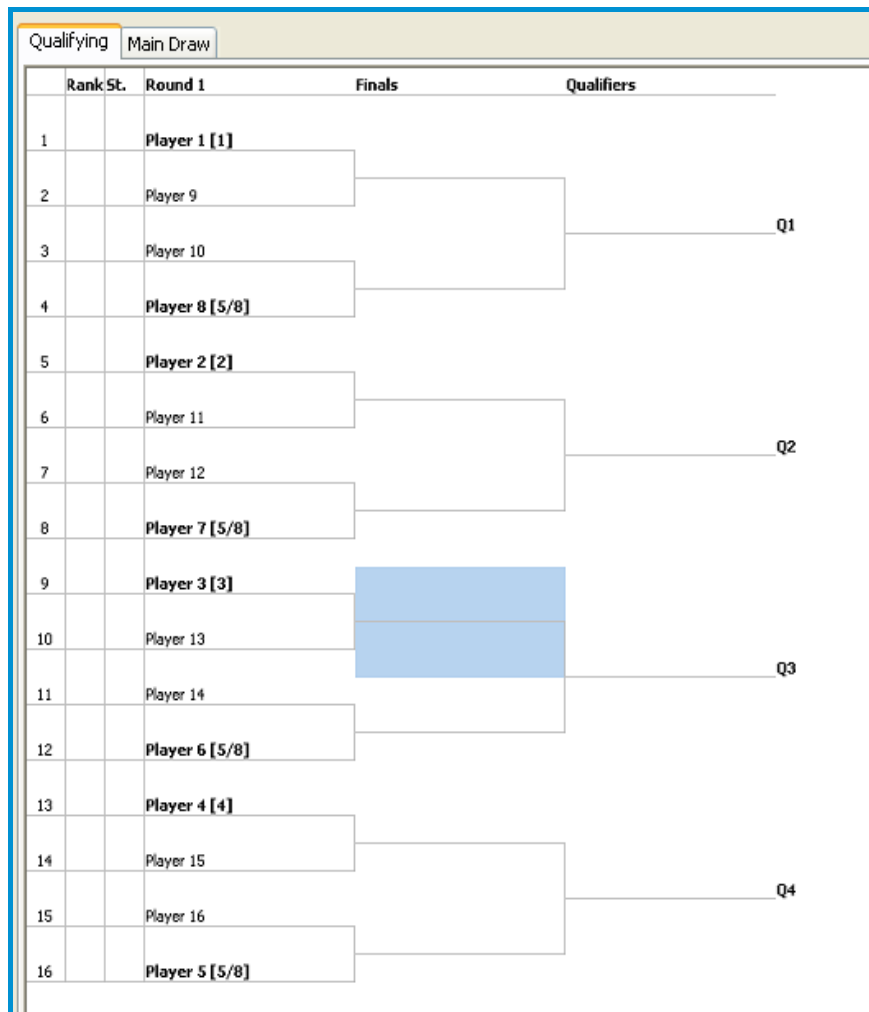


Figure2: Example of a 16 > 4 qualifying draw

6.4 Round-Robin Draw Structure (JTs only)

If a Junior Tournaments chooses to operate a round-robin draw format for their main draw, they must do so following the below guidelines.

a) Guiding principles relating to round-robin pool sizes and number of pools (applicable for 16 or 32 Athlete draws)

- There should be no pools with less than three (3) athletes, and no more than six (6) athletes
- There must be an **even** number of pools
- Only winners of pool groups should move to any knockout rounds
- There must be a playoff match to determine 3rd / 4th place
- For six (6) or less athletes, a one (1) pool format should be used. If one pool is used, there should be no additional knockout draw. I.e. the winner of the pool is to be declared the winner of the event, without a final being played.

Recommended pool formats based on entry numbers

Number of Athletes	Number of Pools	Athletes per pool
7	2	3 & 4
8	2	4 & 4
9	2	4 & 5*
10	2	5 & 5*
11	2	6 & 5*
12	4	3, 3, 3 & 3
13	4	4, 3, 3 & 3
14	4	4, 4, 3 & 3
15	4	4, 4, 4 & 3
16	4	4, 4, 4, & 4

* - Where there are more than 5 athletes in a pool, the tournament reserves the right to reduce the match scoring format.

- For events with 17 or more athletes, the above general principles and recommendations should be applied, with the exception that the maximum number of athletes in each pool is reduced to five (5).

b) 16 Athlete round robin main draw

1. Determining the composition of each pool:

- Each athlete to play the three athletes within their pool.
- Each pool is to have two seeded athletes (provided there are enough athletes with current AR).
- The top athlete from each pool (4 total) to move into cross over semi finals.

NOTE: All athletes are guaranteed three singles matches.

The following procedure will be followed to place the sixteen (16) athletes into the four round-robin groups.

- The field shall be divided into four (4) groups of four (4) athletes each. The top-seeded athlete shall be placed in Group "A", the second-seeded athlete shall be placed in Group "B". The third and fourth seeded athletes shall be drawn randomly into Group "C" or "D".
- Athletes seeded 5 & 6 shall be drawn into either Group "C" or "D". Athletes seeded 7 & 8 shall be drawn into either Group "A" or "B".
- The remaining eight (8) athletes shall be drawn by lot – the first and second athletes drawn to go to Group "A", the third and fourth athletes drawn to go to Group "B" and so on.

2. Determining the pool winner

The final standings of each group shall be determined by the first of the following methods that apply:

- Greatest number of wins;
- Greatest number of matches played;
- Head-to-head results if only two (2) athletes are tied, or if three (3) athletes are tied, then:
 1. If three (3) athletes each have one win, an athlete that has played less than all three (3) matches is automatically eliminated and the athlete advancing to the Single Elimination competition is the winner of the match-up of the two (2) athletes tied with 1-2 records; then
 2. Highest percentage of sets won (sets won against sets played); then
 3. Highest percentage of games won (games won against games played).

If 1, 2, or 3 (above) produce one superior athlete (first place), or one inferior athlete (third place), and the two remaining athletes are tied, the tie between those two athletes shall be broken by head-to-head record.

If ties still exist after the above procedures, the Tournament Committee shall make the final determination.

In applying the tie-breaking procedures, a conduct default or retirement shall count as a win or loss. However, games won or lost in matches with the defaulting or retiring athlete shall not be counted in the application of point 3 (percentage of games won) above

3. Creating the playoff draw after the determination of the pool winners

After the round-robin group phase has been completed, the following procedure will be followed to place the four (4) eligible athletes into the knockout draw.

- The winner of Group "A" will be placed on Line 1.
- The winner of Group "B" will be placed on Line 4.
- The winners of Group "C" and "Group "D" will be randomly placed on either Line 2 or Line 3.

NOTE: There shall be no playoff for the 9th – 16th place positions.

c) 32 Athlete round robin main draw

- i. Determining the composition of each pool
 - Each athlete to play the three athletes within their pool
 - Each pool shall have two seeded athletes (provided there are enough athletes with current AR)
 - The winners of each pool (8 total) to move into cross over quarter finals.

NOTE: All Athletes are guaranteed three singles matches.

The following procedure will be followed to place the thirty-two (32) Athletes into the eight (8) round-robin groups.

- The field shall be divided into eight (8) groups of four (4) Athletes each. The top-seeded athlete shall be placed in Group "A" and the second-seeded athlete shall be placed in Group "B". The third and fourth seeded athletes shall be drawn randomly into Group "C" or "D". The 5th to 8th seeds shall be randomly drawn into Groups "E", "F", "G" or "H".
- Athletes seeded 9 to 12 shall be drawn into either Group "E", "F", "G" or "H". Athletes seeded 13 to 16 shall be drawn into either Group "A", "B", "C" or "D".
- The remaining sixteen (16) athletes shall be drawn by lot – the first and second athletes drawn to go to Group "A", the third and fourth athletes drawn to go to Group "B" and so on.

- ii. Determining the pool winner

The final standings of each group shall be determined by the first of the following methods that apply:

- Greatest number of wins;
- Greatest number of matches played;
- Head-to-head results if only two (2) athletes are tied, or if three (3) athletes are tied; then:
 1. If three (3) athletes each have one win, an athlete that has played less than all three (3) matches is automatically eliminated and the athlete advancing to the Single Elimination competition is the winner of the match-up of the two (2) athletes tied with 1-2 records; then
 2. Highest percentage of sets won (sets won against sets played); then
 3. Highest percentage of games won (games won against games played).

If 1, 2, or 3 (above) produce one superior athlete (first place), or one inferior athlete (third place), and the two remaining athletes are tied, the tie between those two athletes shall be broken by head-to-head record.

If ties still exist after the above procedures, the Tournament Committee shall make the final determination.

In applying the tie-breaking procedures, a conduct default or retirement shall count as a win or loss. However, games won or lost in matches with the defaulting or retiring athlete shall not be counted in the application of point 3 (percentage of games won) (above).

iii. Creating the playoff draw after determining the pool winners

After the round-robin group phase has been completed, the following procedure will be followed to place the eight (8) eligible athletes into the knockout draw:

- The winner of Group “A” will be placed on Line 1 and the winner of Group “B” will be placed on Line 8.
- The winners of Group “C” and “Group “D” will be randomly placed on either Line 4 or Line 5.
- The winners of Group “E”, “F”, “G” and “H” will be randomly placed on the remaining lines, with the first drawn placed on Line 2, the second draw on Line 3, the third drawn on Line 6 and the fourth drawn on Line 7.

NOTE: There shall be no playoff for the 5th – 32nd place positions. However Gold JT events must playoff for 5th to 8th positions.

NOTE: If an athlete retires when losing 4-3 in the first set of a round-robin event, his/her opponent will win the match 6-3, 6-0.

		Group A	Group B	Group C	Group D	Main Draw			
Rank	St.					1	2	3	4
1		Player 1					R2	R3	R1
2		Player 2				R2		R1	R3
3		Player 3				R3	R1		R2
4		Player 4				R1	R3	R2	
Standings		Pl.	Pts	Sets	Games				
1	Player 1	0	0	0 - 0	0 - 0				
1	Player 2	0	0	0 - 0	0 - 0				
1	Player 3	0	0	0 - 0	0 - 0				
1	Player 4	0	0	0 - 0	0 - 0				

Figure 3: Example of a Round-Robin Draw (4 athletes in 4 groups)

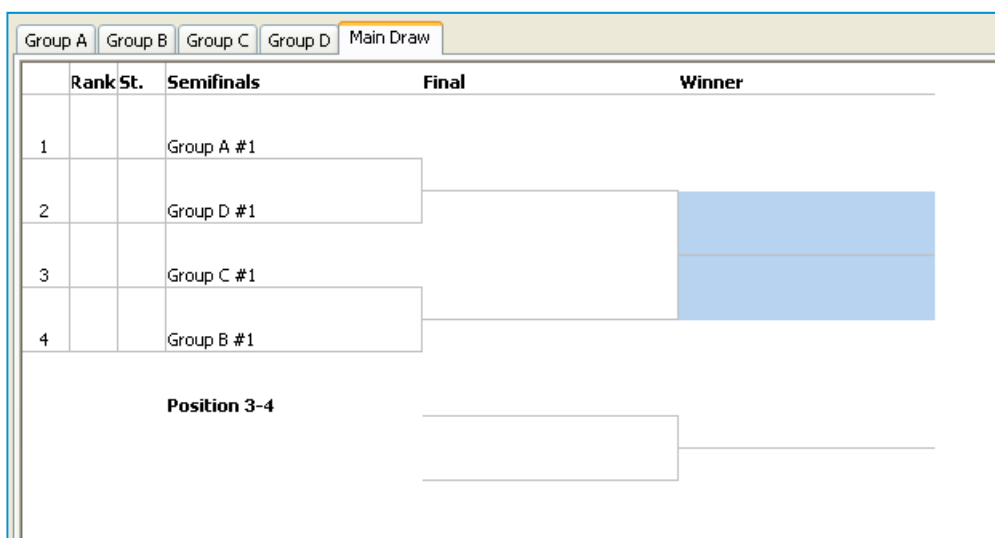


Figure 4: An example of an elimination main draw after the winners of the preliminary round-robin were determined (NOTE: This is relevant for a 16-athlete main draw).

6.5 Seedings - AMTs and JTs

a) Singles

All tournaments must create Acceptance Lists for each event based on the most up-to-date Australian Rankings. This is needed in order to accurately draft the seeding list. Each tournament must provide their relevant Member Association and Tennis Australia with an electronic copy of each of the event acceptance lists with each athlete's most up-to-date ranking.

In addition to this:

- Seedings for all Australian Money Tournaments must be approved by the relevant seeding committee and National Coach in each state/territory and will be selected in direct alignment with the official and most up-to-date Australian Rankings.
- Protected Rankings can be used for seeding purposes.
- Notwithstanding this, the following procedure may be used when determining seedings for an event: If, in the opinion of the Tennis Australia/Seeding Committee an athlete is worthy of being seeded, that athlete's seeding shall be based on the following criteria:
 - a) An athlete recovering from illness/injury, with a current low AR,
 - b) An athlete who has been playing internationally, with a current low AR,
 - c) A 'known performer' who the selectors recognise must be seeded compared to the rest of the competing field.

b) Doubles

Doubles seedings will be prepared in line with the combined Australian Ranking (including Protected Rankings) of the two athletes in each pairing, notwithstanding the below.

- If, in the opinion of the Tennis Australia/Seeding Committee a team is worthy of being seeded, the team's seeding shall be based on the following criteria:
 1. A team comprising of an athlete(s) recovering from illness/injury, with a current low AR,
 2. A team comprising of an athlete(s) who had been playing internationally, with a current low AR,
 3. A team comprising of a 'known performer(s)' who the selectors recognise must be seeded compared to the rest of the competing field.

The decisions of TA / MA or the Tournament Committee (or its Tournament Director) on seeding will be final and binding on all parties (including all relevant Athletes) and no one will have the right to appeal against or otherwise challenge such decisions.

6.6 Number of Seeds

a) Main Draw events

The number of seeds must be as follows:

Singles		Doubles	
< 8 Athletes	2 seeds	< 8 teams	2 seeds
9-16 Athletes	4 seeds	9-16 teams	4 seeds
17-32 Athletes	8 seeds	17-32 teams	8 seeds
33-95 Athletes	16 seeds	33-64 teams	16 seeds
96 > Athletes	32 seeds		

NOTE #1: Please note that the number of seeds required for a draw is different if undertaking a round-robin draw. Two seeds are required for each round-robin group.

NOTE #2: For consolation events, the number and placement of seeds follows all principles of Main Draw elimination draw procedures

b) Qualifying Singles events

The number of seeds must be as follows:

Draw Format	No. of Seeds
4 Athletes > 2 qualifiers	4 seeds
8 Athletes > 2 qualifiers	4 seeds
8 Athletes > 4 qualifiers	8 seeds
16 Athletes > 4 qualifiers	8 seeds
16 Athletes > 8 qualifiers	16 seeds
32 Athletes > 4 qualifiers	8 seeds
32 Athletes > 8 qualifiers	16 seeds
48 Athletes > 8 qualifiers	16 seeds
48 Athletes > 4 qualifiers	8 seeds
64 Athletes > 8 qualifiers	16 seeds
64 Athletes > 4 qualifiers	8 seeds
96 Athletes > 8 qualifiers	16 seeds
128 Athletes > 8 qualifiers	16 seeds

6.7 Placement of Seeds

The procedures for placing seeds in the main draws where the “elimination” format is used are as follows:

- a) Place seed 1 on line 1 and seed 2 on line 16 (16 draw) or line 32 (32 draw). To determine the location (line of the draw) of the remaining seeds, draw in groups according to the following table:

Seeds		16 Draw 4 seeds	24/32 Draw 8 seeds	48/64 Draw 16 seeds	96/128 Draw 32 seeds
3 – 4	First Drawn	5	9	17	33
	Second Drawn	12	24	48	96
5 – 8	First Drawn		8	16	32
	Second Drawn		16	32	64
	Third Drawn		17	33	65
	Fourth Drawn		25	49	97
9-12	First Drawn			9	17
	Second Drawn			25	49
	Third Drawn			40	80
	Fourth Drawn			56	112
13-16	First Drawn			8	16
	Second Drawn			24	48
	Third Drawn			41	81
	Fourth Drawn			57	113
17-24	First Drawn				9
	Second Drawn				24
	Third Drawn				41
	Fourth Drawn				56
	Fifth Drawn				73
	Sixth Drawn				88
	Seventh Drawn				105
	Eight Drawn				120
25-32	First Drawn				8
	Second Drawn				25
	Third Drawn				40
	Fourth Drawn				57
	Fifth Drawn				72
	Sixth Drawn				89
	Seventh Drawn				104
	Eight Drawn				121

6.8 Optimal state separation of athletes

a) All JT events

Wherever possible, if there are multiple athletes from the same State/Territory, they must not be drawn to play each other in the first round. However if two qualifiers are drawn to meet each other in the first round of the main draw, the state separation rule will not apply.

b) JT Platinum state separation rule for seeded athletes

If there are two seeded athletes from the same State/Territory competing in the same Platinum National Junior Championship singles event, they shall be drawn into different halves of the draw. If three or four seeded athletes from the same State/Territory compete in the same Platinum National Junior Championship singles event, the first ranked and second ranked athletes shall be drawn as above and the third and fourth ranked athletes drawn into the quarters which do not already contain one of that State/Territory's seeded athletes.

The selection of the top four athletes from any one (1) State/Territory shall be determined by the latest Australian Rankings available, notwithstanding Section 1 paragraph 6.5 (a) – Seedings AMTs and JTs. Any remaining seeded athletes from the State/Territory will be drawn by lot into their respective seeding positions.

6.9 Qualifiers / Lucky Losers placement and priority

NOTE: The Tournament Referee should be a part of the administration when conducting this process.

a) Qualifiers

- If the Main Draw is made before the conclusion of the qualifying event, places randomly drawn for qualifiers will be clearly designated as such in the draw. These places will be displayed as "Qualifier".
- At the conclusion of the qualifying competition, the successful qualifiers will be drawn by lot for their places in the Main Draw. There shall be no prior designation of which qualifying section applies to which qualifying place in the Main Draw.
- Qualifiers may be seeded, but for this to occur, the main draw should ideally be drawn after the qualifying draw has been fully completed or at least until it is confirmed by completed results that an athlete who could potentially be seeded in Main Draw if he/she were to qualify, has actually done so.

b) Lucky Losers

- If, during the qualifying event, places become available for Lucky losers, these places as well as all places previously designated as "qualifier", will now be displayed as "Qualifier/Lucky Loser" and the qualifiers and lucky losers will be drawn together as a group, and randomly into the available places.
- If the qualifiers have been placed before it is known that Lucky Losers are required, the Lucky Losers will be placed in order of priority into the places as they become available. If two or more Lucky Loser places became available at the same time, but after the qualifiers have been placed, then these Lucky Losers will be placed by lot into the available places.
- In order to determine the Lucky Loser priority order amongst the athletes who have lost in the final round of qualifying, a draw should be done immediately upon the conclusion of the final qualifying match. The ranked (Australian Ranking only, including Protected Ranking) losers of the final round of qualifying shall first be randomly drawn, thereafter the unranked losers of the final round of qualifying shall be drawn to determine the priority of Lucky Loser status amongst the Athletes who lost in the final round of qualifying. Ranked athletes shall have a higher priority over unranked athletes.

- The established priority order will remain the same until the completion of all first round singles matches (as well as second round matches if Athletes are allocated byes in the first round) in that event which may occur over several days.
- If additional lucky losers are needed, the losers of the previous round(s) of qualifying shall be prioritised in the same manner but will have a lower priority than the athletes who lose in the final round of qualifying.

CASE: When is the sign-in deadline for lucky losers if qualifying finishes on the same day as the start of main draw?

DECISION: If qualifying matches are still to be played on the same day as the start of the main draw, the lucky loser sign-in will close five (5) minutes following the completion of the last qualifying match.

NOTE: Where an athlete in a main draw match scheduled before the completion of qualifying withdraws before that match commences, this match should be postponed until a suitable Lucky Loser can be determined.

- Where Lucky Loser position(s) become available the day prior to the first round main draw matches, every effort should be made to confirm with the eligible athletes(s) as soon as possible after the places become available that they wish to be placed in the draw as a Lucky Loser. If the Athlete does not wish to play there will be no penalty imposed and the event should try to confirm the availability of the next athlete on the Lucky Loser priority list.
- If the athlete who is drawn with the highest Lucky Loser priority can be contacted on a day prior to the start of main draw once a Lucky Loser position becomes available and that athlete wishes to accept the vacant position, then he/she can be immediately placed into that vacant position in the draw and does not need to sign in on the day that Main Draw matches begin.
- If the first athlete eligible to accept a Lucky Loser position cannot be contacted on the day(s) before the main draw commences, then they retain their right to sign in as a Lucky Loser on the day(s) of first round matches. In this instance, the vacant position in the draw should be simply stated as "Lucky Loser" and shall be filled subject to the following procedures which will also apply in all other circumstances.
- Where the Lucky Loser sign-in process is conducted over more than one day, any athlete eligible to sign-in for a Lucky Loser may sign-in for a possible position whether or not they signed in on any preceding day.

Lucky Loser process in Knock Out events

- The Lucky Loser sign-in process must still occur after the priority order has been determined. This must close thirty (30) minutes before the scheduled commencement of the relevant first round match which may occur over a number of days.
- There can be no phone sign-in's for Lucky Loser. Sign-in must be in person.
- Only Athletes who have played and lost in the qualifying competition can sign in for Lucky Loser.
- If a replacement athlete is required, they must be on court ready to play within five minutes of the default for punctuality being announced. If they are not available they lose their right to accept Lucky Loser status for the remainder of the event, and the next athlete who has signed in shall be called and the process continued until a Lucky Loser is found, or if no one is found, a walkover will be declared.
- An athlete who withdraws before or during a qualifying draw, or is a "no show" for a qualifying match may not be given Lucky Loser status in the main draw.
- An athlete who retires from a match in a qualifying draw due to sickness or injury may be selected as a Lucky Loser if he/she has sufficiently recovered. Refer to Section 3, Paragraph 2 (Withdrawals /

Retirements / no Shows / Doubles Substitutions) for the procedure to be medically cleared back into a tournament.

- An athlete who fails to complete a match in the qualifying event cannot be allowed accept Lucky Loser status, unless the Referee accepts that extenuating circumstances apply.

CASE: What happens if main draw matches have begun whilst qualifying is still to be completed and a lucky loser position becomes available?

DECISION: The main draw match with the lucky loser position must be rescheduled until after the qualifying event has been completed and a lucky loser has been drawn and notified.

Lucky Loser procedures in Round-Robin events

- i. From qualifying to the round robin stage:
 - The aforementioned principles apply.

NOTE: If two Lucky Loser positions occur at the same time in the round robin pools, the two eligible lucky losers will be placed into the positions by a random draw.

- ii. From the Round Robin pool stage to the knockout phase
 - The ranked athletes (Australian Ranking only) that finish in 2nd place in the round-robin group stage shall first be randomly drawn, thereafter the unranked athletes that finished 2nd in the round-robin group stage shall be drawn to determine the priority of Lucky Loser status amongst the athletes who failed to qualify from the round-robin group stage. If additional lucky losers are needed, the same above procedure will be followed for athletes that finished 3rd in the round-robin group stage and then for athletes that finished 4th in the round-robin group stage.
 - All other principles inherent in the Lucky Loser processes should apply.
- iii. From Round Robin Pool groups to the 3-4, or 5-8 playoffs there will be no Lucky Losers used to fill withdrawals in playoffs.

6.10 Byes – Assignment and Placement

a) Singles Main Draw

- If there is a 16 or 32 main draw, no byes shall be awarded unless there are an insufficient number of direct acceptances.
- If there is a 24 main draw, the top eight (8) seeds shall be awarded a bye.
- If there is a 48 main draw, the top sixteen (16) seeds shall be awarded a bye.
- If there is a 96 main draw, the top thirty-two (32) seeds shall be awarded a bye.
- Additional byes will be placed against the top seeds in descending order, until all seeds have received a bye.
- Any additional byes will be placed so as to be as evenly distributed in the draw as possible.

Doubles Main Draw

- If there is a 16, 32 or 64 main draw, no byes shall be awarded unless there are an insufficient number of entered teams.
- Any byes will be placed against the top seeds in descending order, until all seeds have received a bye
- Any additional byes will be placed so as to be as evenly distributed in the draw as possible.
- If there is a 24 main draw, the top eight (8) seeds shall be awarded a bye.
- If there is a 48 main draw, the top sixteen (16) seeds shall be awarded a bye.

b) Qualifying Draw

If there are not enough competitors to fill the qualifying draw, then after the seeds are placed in the draw, the required number of byes shall be awarded as follows:

- Priority shall be to the highest seeds.
- Remaining byes shall be placed so as to be as evenly distributed in the draw as possible.

6.11 Remaining Athletes

After the seeds and the byes are placed in the draw as above provided, then the remaining athletes shall be drawn by lot to determine in which places they are to be entered into the draw from top to bottom of the draw.

6.12 Remake of Draws

A complete redraw will only take place in the event of an administration error or in the best interest of the tournament with the approval of the Tournament Referee.

The only exception to this is when an athlete who should have been seeded is for whatever reason placed in a position of an un-seeded athlete in the draw. In this instance, procedures to rectify the problem will by enlarge follow the principles of the seed withdrawal rule, both in relation to the seeding position that the 'missed' Athlete should rightfully have held and also the timing of the discovery of the error.

6.13 Minimum Prizemoney

Prize money at all Australian Money Tournaments shall be paid by the club/centre/association conducting the tournament at the conclusion of the tournament, unless otherwise approved by Tennis Australia or the relevant Member Association. The minimum prize money distribution is listed below. Tournaments are permitted to distribute more than the minimum with the prior approval of Tennis Australia.

AMTs	Main Draw Singles				Main Draw Doubles (per pair)		
Category	Winner	Finalist	Semi-Finalist	Quarter-Finalist	Winners	Finalists	Total
Platinum \$20,000	\$3200	\$1560	\$768	\$176	\$2000	\$1000	\$20,000
Platinum \$15,000	\$2400	\$1170	\$578	\$131	\$1500	\$750	\$15,000
Platinum \$10,000	\$1600	\$780	\$384	\$88	\$1000	\$500	\$10,000
Gold	\$1200	\$585	\$288	\$66	\$750	\$375	\$7,500
Silver	\$550	\$250	\$125	N/A	\$300	\$150	\$3,000
Bronze	\$400	\$150	\$75	N/A	\$204	\$96	\$2,000

Table 1: Tennis Australia minimum prizemoney distribution

NOTES:

- Prize money shall be paid only for matches played, with the exception of abandoned tournaments
- A match won by "No-show" or "walkover" will NOT count as a match won for prizemoney unless the athlete has already won a round.
- No prizemoney will be awarded to an athlete or team who withdraws without playing their first match.

CASE: If an athlete in a 24-player main draw receives a "bye" as a top-eight seed, then receives a walkover into the QF's, are they eligible to receive prizemoney?

DECISION: No, an athlete who receives a "bye" and then a walkover into the QF's is not eligible to receive prizemoney as they have not won a match prior.

- Any 'no show' default where an athlete makes no contact within one (1) hour of the scheduled match time will receive no prizemoney at the discretion of the Referee.
- Singles athletes or doubles team(s) that retire during a match or withdraw from a match without the approval of the referee will receive prize money applicable to the previous round reached.
- Singles athletes or doubles team(s) that retire during a match or withdraw before the start of the match with the permission of the referee will receive prize money applicable to the round reached.

CASE: If an athlete/team retires during a match with an injury and are eligible to receive prizemoney, do they have to present a medical certificate?

DECISION: In the case of an on-court retirement, the referee can choose to request the Athlete/team submit a medical certificate before accepting their prizemoney if they doubt the validity of the injury.

- g) Any athlete who is defaulted shall lose all prize money earned for that event at the tournament, unless:
- The athlete was defaulted for a violation of the Punctuality i.e. No Show (see above), but contacts the referee and is subsequently excused within one hour of the-default
 - A member of a doubles team did not cause any of the misconduct Code Violations that resulted in the team being defaulted.

6.14 Prize money distribution in the case of abandoned tournaments

Where it is not possible to complete the singles or doubles final, affected athletes will receive an equal distribution of the advertised winner & runner-up prizemoney.

If tournaments are abandoned before the singles final, but having reached the prizemoney distribution stage, any athletes that are still in contention to win the event should receive an equal distribution of the prizemoney being offered. For example – If the event is abandoned at the quarter-final stage, the tournament should total up the prizemoney on offer (winner, runner-up, semi-finals and quarter-finals) and distribute this equally to the eight remaining Athletes.

If tournaments are abandoned before reaching the prizemoney stage, athletes that are still in contention to win the event should receive a full refund of their entry fee, less a \$10.00 administration fee if the tournament chooses.

NOTES:

- (a) An athlete needs to win a match to be entitled to prize money
- (b) Athletes who have not won through to a prizemoney round but have completed a match are not entitled to any prizemoney
- (c) Athletes who have not completed their first match at the time of the abandonment will be entitled to a full entry fee refund
- (d) A "bye" does not count as a win but a retirement/walkover or default after the start of the match does
- (e) Athletes who do not complete a match are entitled to a full refund of entry fee, less a \$10.00 administration fee if the tournament chooses.

6.15 Payment method for prizemoney

Prizemoney can either be paid in cash, bank transfer or by cheque in Australian Dollars. Payment of prizemoney must be completed either on-site or by no later than fourteen (14) days following the completion of the tournament.

6.16 Unpaid entry fees and prizemoney payment

Where an athlete has unpaid entry fees, the Tournament Committee may decide to deduct those fees from any prizemoney won by the athlete and/or withhold all or a part of any prize won by the athlete until the outstanding fees are paid.

6.17 Prizes and Non-Cash Awards

In addition to on-site prize money, each Australian Money Tournament may give to each singles and doubles winner during the on-site awards presentation one non-cash award or prize plus a trophy. Non-cash awards or prizes valued over \$1,000 should be notified to the relevant Member Association no later than forty-two (42) days prior to the tournament and can be offered for results in that tournament only.

6.18 Bonus prize money as part of a circuit

Prize money given to athletes based on a combined circuit of events should be notified to the relevant Member Association no later than forty-two (42) days prior to the commencement of the proposed tournament circuit.

6.19 Additional prizemoney above the minimum

Tennis Australia recommends that any additional prizemoney paid above the minimum distribution stated in Section 3 paragraph 6.13 (Minimum Prizemoney) above is done equally across the applicable prizemoney rounds.

6.20 Small Draw Reduction

The tournament committee reserves the right to proportionately reduce the amount of prize money dependent on the number of athletes in the draw for AMT Silver and Bronze tournaments. Full prizemoney must be paid for AMT Platinum (\$20,000, \$15,000 and \$10,000) and Gold tournaments regardless of the entry numbers in these events.

In the event of a reduction decrease in prizemoney for AMT Silver and Bronze tournaments, Tennis Australia and the relevant Member Association reserves the right to proportionately reduce its financial contribution to the event. Prizemoney reductions must follow the following scales (dependent on advertised draw sizes):

Note – The tournament has the option to ignore this rule and pay 100% of advertised prizemoney regardless of entry numbers in the event.

a) Men's Singles

Number of combined entries (main draw & qualifying)	Prize money that must be paid
48 or more Athletes	100% of prize money advertised
32 to 47 Athletes	75% of prize money advertised
31 or less Athletes	50% of prize money advertised

b) Women's Singles

Number of combined entries (main draw & qualifying)	Prize money that must be paid
24 or more Athletes	100% of prize money advertised
16 to 23 Athletes	75% of prize money advertised
15 or less Athletes	50% of prize money advertised

c) Men's Doubles events

Number of doubles teams (main draw)	Prize money that must be paid
16 or more teams	100% of prize money advertised
13 to 15 teams	75% of prize money advertised
12 or less teams	50% of prize money advertised

d) Women's Doubles events

Number of doubles teams (main draw)	Prize money that must be paid
10 or more teams	100% of prize money advertised
8 or 9 teams	75% of prize money advertised
7 or less teams	50% of prize money advertised

6.21 Prizemoney for Junior Tournaments

Under no circumstance can prize money be given to Athletes participating in a Junior Tournaments. Individual gift certificates or non-cash awards given for winners and finalists of singles and doubles events must not exceed \$300 in value.

6.22 Balls

Tournaments are encouraged to use the Tennis Australia officially sponsored ball type (currently Dunlop), unless in a formal contractual arrangement with another ball supplier. For details of Tennis Australia approved balls and ball requirements, visit <http://www.tennis.com.au/learn/courts-and-surfaces/resources/approved-balls>

However, due to contractual arrangements with Dunlop all Platinum JTs must use the Dunlop "Australian Open" brand of tennis balls and they can purchase these balls from Tennis Australia at an agreed rate.

a) Number of Tennis Balls per match –

All AMT's and Platinum / Gold JTs

- A minimum of three (3) new balls are to be provided for each main draw & qualifying singles and doubles match.
- An additional three new balls will be provided for a full third set (but not for a match tie-break).
- Consolation should be played with good used balls with the exception of semi-finals and Finals which must be played with three (3) new balls.

Silver and Bronze JTs

- A recommendation of three (3) new balls, but a requirement for a minimum of two (2) new balls is to be provided for each main draw & qualifying singles and doubles match.
- Consolation should be played with good used balls with the exception of semi-finals and Finals which must be played with two (2) new balls.

6.23 Tennis Australia Approved Tennis Ball List

Australian Ranking tournaments must use tennis balls that meet appropriate standards. Tennis Australia approved balls have been tested to confirm that they meet those standards. Please see the Tennis Australia website for the current list of approved tennis balls. Australian Ranking tournaments must not use any other tennis balls without first obtain Tennis Australia's confirmation that those balls meets the appropriate standards.

Dunlop

- [Australian Open](#)
- [Fort Elite](#)
- [Pro Tour](#)
- [Club All Court](#)
- [Fort All Court](#)
- [Fort Clay Court](#)
- [Stage 1 \(Green\)](#)
- [Stage 2 \(Orange\)](#)
- [Stage 3 \(Red\)](#)

Wilson

- Tour Premier All Court
- Championship Extra Duty

Slazenger

- Championship Hydroguard
- Hardcourt
- Open
- Wimbledon
- Tournament
- Introductory Balls – Green and Orange (Hot Shots & JDS Tournaments Only)

Head

- Head ATP
- Head Championship

Babolat

- Babolat Gold

Tretorn

- Pro Court
- Serie +

Technifibre

- X One
- Court

Teloon

- Pound Tour
- Introductory – Midi (Green Dot)

7. Scoring Formats

The following will apply to the scoring of matches at all Australian Ranking Tournaments.

1) Scoring formats for Australian Money Tournaments (AMT) AND Junior Tournaments (JT)

3 TB Sets = Best of 3 Tie-Break Sets.

2 TB Sets + 10MTB = 2 Tie-Break Sets and 10 Point Match Tie-Break.

2 TB Sets + 10MTB (No-Ad) = 2 Tie-Break Sets and 10 Point Match Tie-Break using "No-Ad Scoring".

3 FAST4 Sets = Best of 3 FAST4 Sets.

2 FAST4 Sets + 10MTB = 2 FAST4 Sets and 10 Point Match Tie-Break.

2 FAST4 Sets + 10MTB (No-Ad) = 2 FAST4 Sets and 10 Point Match Tie-Break using "No-Ad Scoring".

Australian Money Tournaments (AMT)				
	<u>Platinum</u>	<u>Gold</u>	<u>Silver</u>	<u>Bronze</u>
<u>Qualifying Singles</u>	<u>3 TB Sets</u>	<u>3 TB Sets</u>	<u>3 TB Sets</u> Or <u>2 TB Sets + 10MTB</u>	<u>2 TB Sets + 10MTB</u> Or <u>3 FAST4 Sets</u>
<u>Main Draw Singles</u>	<u>3 TB Sets</u>	<u>3 TB Sets</u>	<u>3 TB Sets</u> Or <u>2 TB Sets + 10MTB</u>	<u>2 TB Sets + 10MTB</u> Or <u>3 FAST4 Sets</u>
<u>Doubles</u>	<u>2 TB Sets + 10MTB</u> (No-Ad)	<u>2 TB Sets + 10MTB</u> (No-Ad)	<u>2 TB Sets + 10MTB</u> (No-Ad)	<u>2 TB Sets + 10MTB</u> (No-Ad) Or <u>2 FAST4 Sets + 10MTB</u>
<u>Consolation</u>	<u>2 TB Sets + 10MTB</u>	<u>2 TB Sets + 10MTB</u>	<u>2 TB Sets + 10MTB</u>	<u>2 TB Sets + 10MTB</u> Or <u>2 FAST4 Sets + 10MTB</u>

Junior Tournaments (12U/14U/16U/18U)				
	Platinum	Gold	Silver	Bronze
Qualifying Singles	<u>3 TB Sets</u>	<u>3 TB Sets</u>	<u>3 TB Sets</u> Or <u>2 TB Sets + 10MTB</u>	<u>NA</u>
Main Draw Singles	<u>3 TB Sets</u>	<u>3 TB Sets</u>	<u>3 TB Sets</u> Or <u>2 TB Sets + 10MTB</u>	<u>2 TB Sets + 10MTB</u> Or <u>3 FAST4 Sets</u>
Doubles	<u>2 TB Sets + 10MTB</u> <u>(No-Ad)</u>	<u>2 TB Sets + 10MTB</u> <u>(No-Ad)</u>	<u>2 TB Sets + 10MTB</u> <u>(No-Ad)</u>	<u>2 TB Sets + 10MTB</u> <u>(No-Ad)</u> Or <u>2 FAST4 Sets +</u> <u>10MTB</u>
Consolation	<u>2 TB Sets + 10MTB</u>	<u>2 TB Sets + 10MTB</u>	<u>2 TB Sets + 10MTB</u>	<u>2 TB Sets + 10MTB</u> Or <u>2 FAST4 Sets +</u> <u>10MTB</u>
3-8 Play-Offs	<u>2 TB Sets + 10MTB</u>	<u>2 TB Sets + 10MTB</u>	<u>2 TB Sets + 10MTB</u>	<u>2 TB Sets + 10MTB</u> Or <u>2 FAST4 Sets +</u> <u>10MTB</u>

2) Match Format Reductions

In exceptional circumstances (such as inclement weather, including where the extreme heat policy is activated), the Referee, who will be the final authority in this matter, can change the match formats, when it becomes clear that such circumstances will prevent a tournament from being completed within the publicised dates.

Change in match formats must be made giving regard to the following priority, noting that not all options need to be used:

1. Introduce "No-Ad" scoring to consolation matches;
2. Reduce match format for consolation matches;
3. Reduce match format for doubles matches;
4. Reduce match format for any play-off matches;
5. Reduce match format for main draw singles matches.

The following reduced match formats are available, and listed in recommended order:

1. Two tie break sets + 10 Point match tie-break.
2. Best of 3 FAST4 sets.
3. Two FAST4 Sets + 10 Point Match Tie-Break.
4. Best of three short sets.
5. Two short sets + 10 Point Match Tie-Break.

The referee must determine the appropriate match formats to use, based on the remaining time available to complete the tournament.

3) Event cancellations.

If exceptional circumstances persist (such as inclement weather, including where the extreme heat policy is activated) that require the cancellation of events, events should be cancelled in the following order, aiming to maximising each participants playing opportunity:

1. Qualifying Consolation Singles (i.e. first event to be cancelled);
2. Main Draw Doubles, Main Draw Singles Playoff (3-8) and Consolation Singles to be prioritised based on Tournament Referee judgement of all circumstances;

In order to cancel or abandon the following events, referees must receive approval from Tennis Australia or the relevant Member Association. All other events listed above must be cancelled, BEFORE considering the options below:

3. Cancel Main Draw Qualifying events;
4. Cancel Main Draw Singles (i.e. last event to be cancelled);

Procedure for filling vacancies in the main draw when cancelling the qualifying:

- If it is impossible to start qualifying competition due to inclement weather, the highest rank athletes according to the **original acceptance list** will be moved in to the main draw;
- If a qualifying event is cancelled after having commenced, the highest ranked athletes remaining in the event (**i.e. based on seed ranking**) taking into account the results of all completed matches before the cancellation, will be moved into the main draw.
- If any athletes have actually qualified before the cancellation of the qualifying event, they must be included in the athletes who are moved into the main draw.

4) General points to consider.

- a) Fast4.
 - i) The FAST4 scoring format is TA's preferred scoring alternative for tournaments and referees to consider where shortened scoring formats are mentioned in these regulations.
 - ii) When the FAST4 scoring format is used, the "No-Ad" scoring method must be used.
 - iii) When the FAST4 scoring format is used, the "No Let Rule" must be adopted as an alternative procedure.
- b) Pre-event requests to reduce the match formats must be approved by the TA or relevant Member Association. Match format reductions should not provide a solution to poor planning or accepting more entries than the tournament venues can accommodate.
- c) In a Round Robin format event (after the commencement of the event), if time restrictions are in place, the FAST4 match format must be introduced.
- d) NOTE: PRO SETS (FIRST TO 8 GAMES) IS NOT AN APPROVED SCORING FORMAT AND MUST NOT BE USED.
- e) Mid- Round Match Format Reduction:
 - i) At the Referee's discretion, a match format change can be introduced even if all matches within the same round have not been completed.

- ii) However, once a match has commenced using a particular scoring format, this format must be maintained until the completion of the match.
- f) In accordance with the Extreme Heat Policy, match formats can be altered either pre-tournament or on a daily basis as required.
- g) When cancelling events, referees should attempt to have all matches in the draw progress up to the same stage/round of the tournament.

5) Reduced Scoring Formats (Explained).

a) **FAST4**

A set is complete once a player/team reaches four (4) games. A FAST4 tie-break is played when the score reaches three (3) games all.

In a FAST4 tie-break, the player/team who first wins five (5) points shall win the set, with a deciding point played at 4-4. The player whose turn it is to serve at the commencement of the tie-break (Player A) will serve two (2) points starting on the right half of the court. The opposing player (Player B) will then serve two (2) points starting on the right half of the court. Player A (or the partner, Player C, in doubles) will then serve two (2) points. Player B (or the partner, Player D, in doubles) will then serve the following two (2) points.

If the score reaches 4-4, Player B (or Player D in doubles) will serve the final point of the tie-break with the receiver(s) choosing whether to receive the serve from the right half or the left half of the court.

Players/Teams will only change ends after the first four (4) points.

All singles and doubles matches adopt "no-advantage scoring", with the receiver(s) choosing the service side when the game score reaches deuce.

FAST4 is played **with** the "no let rule". In doubles, if a serve touches the net, strap or band and lands (bounces) within the correct service box, either player on the receiving team can return the ball. If either players or teams make an incorrect "let" call, this is an "Accidental Hindrance" under rule 26 of the Rules of Tennis.

When the athletes change ends at the end of a game and during a tiebreak game, play shall be continuous and the athletes shall change ends with athletes having to be ready to play within 60 seconds of the previous games completion.

At the end of each set, there shall be a set break of a maximum of 90 seconds ("Set Break"), from the end of the last point of the previous set until the first serve is struck to start the next set.

For consolation singles events and Doubles events, matches will be played as the best of two (2) FAST4 sets (first to four (4) games) with a short tie-break (first to five (5) points, deciding point at four (4) points all) played at three (3) games all. If sets are even at the conclusion of the second set, a match tiebreak (first to ten (10) with an advantage of two (2) points) will be played in lieu of a third set.

b) **"SHORT" SETS**

The first player/team who wins four games wins that set, provided there is a margin of two games over the opponent(s). If the score reaches four games all, a tie-break to game shall be played.

c) **MATCH TIE-BREAK (10 POINTS)**

When the score in a match is one set all, one tiebreak game is played to decide the match. This tiebreak game replaces the deciding final set. The player/team who first wins ten points shall win this Match Tiebreak and the match, provided there is a margin of two points over the opponent(s).

Note: When using the Match Tiebreak to replace the final set:

- the original order of service continues;
- in doubles, the order of serving and receiving within the team may be altered, as in the beginning of each set;
- before the start of the match tie-break there shall be a 120 seconds set break.
- balls should not be changed before the start of the match tie-break even if a ball change is due.

Section 2: Officiating Roles & Procedures

1. Code Violations

Any code violations given during an AMT or JT tournament must be submitted into the Tournament Planner file prior to the completion of the tournament. Athletes in the membership database with a valid email address will be sent a confirmation of the code violation given at the tournament the following week. If an athlete reaches a certain number of code violations within a 12-month period, they shall also receive an automatic suspension notice. It is the responsibility of the Athlete to ensure the email address in the membership database is current.

2. Tournament Staff

2.1 Tournament Referee

It is a mandatory requirement for an Australian Ranking tournaments to appoint a Referee (and, if appropriate, Assistant Referee(s) for the tournament and delegate the powers and responsibilities set out below to the referee. The Tournament Referee must be accredited at the following levels:

- **Platinum & Gold:** A minimum of an ITF White Badge or higher or accredited Tennis Australia Level A Referee
- **Silver & below:** A minimum of a Tennis Australia Level B Referee

The Tournament Referee must:

- a) Responsible to obtain match plan from Tournament director/MA four weeks prior to the event and review.
- b) Be on-site (or, where not reasonably practicable, ensure an appropriately qualified deputy is present) at the tournament venue a minimum of one (1) hour prior to the start of play and at all times during the playing of matches (including any tournament sign-ins);
- c) Ensure the venue is suitable for play and in consultation with the Tournament Director ensure all facilities provide a safe environment for all Athletes and other stakeholders.
- d) As a first option, be present when the draw is conducted or, if this is not possible and with the agreement of the Tournament Director, approve all draws once conducted by the Tournament Director before being published, within an agreed timeframe, and any subsequent draw alterations before they are released;
- e) Be present when the daily schedule is determined, or if agreed to with the Tournament Director, at the very least approve all order of play schedules once conducted by the Tournament Director with an agreed upon timeframe before being published and any subsequent match time alterations before they are released;
- f) Act as final on-site authority ensuring that the tournament is conducted fairly in accordance with these Rules and Regulations as to all matters arising that require immediate resolution at the Tournament site;
- g) Rule on matters in relation to the interpretation of the Rules of Tennis, at the request of a chair umpire or on appeal by an athlete from the decision of a Chair Umpire or on appeal of a Court Supervisor (the Referee's decision on matters relating to the interpretation of the Rules of Tennis will be final and binding on all parties and no one will have the right to appeal against or otherwise challenge that decision);
- h) Subject to Section 2 paragraph 3 below, resolve any disputes between Athletes in matches played without a Chair Umpire;

- i) When weather or other conditions threaten the immediate safety of the Athletes, spectators, officials or any other persons on the tournament site, the Referee may suspend or postpone the match(es) until such time that in his/her opinion the threat to safety is no longer evident;
- j) Monitor and implement the provisions of the Extreme Weather Policy where necessary
- k) Determine the suspension of play due to failing light conditions and decide the appropriate utilization of court lighting;
- l) Decide if a court is fit for play or decide if a match should be moved to another court;
- m) Be responsible for the application and interpretation of the code of behavior;
- n) Be responsible for decisions regarding No-shows, Late Withdrawals, Medical withdrawal & clearances;
- o) Direct, supervise, educate, instruct and evaluate on-court and off-court officials (where applicable), including the authority to:
 - Make the assignment of all Chair Umpires and approve all Line Umpires for Tournament matches; and
 - Remove a Chair Umpire and/or remove, rotate or replace any Line Umpire when necessary to improve the officiating of a match.
 - Conduct Officials meetings and briefings during the tournament to ensure the best possible Officiating service is provided.
- p) Maintain a continuous dialogue during the tournament with the Tournament Director and submit a report (within 7 days of the tournament's completion) to Tennis Australia and the relevant Member Association evaluating the Tournament;
- q) Ensure that on-court officials are competent and familiar with the relevant rules and procedures;
- r) Ensure Officials are made aware of all relevant tournament details including regulations, specific provisions and facilities.
- s) Rule on the acceptability of an athlete's clothing and/or equipment pursuant to Appendix 6 (Player's Dress and Equipment);
- t) Have the authority to order an athlete, coach, representative, agent, relative or other associate of an athlete to move away from the side of a court and/or leave the tournament site;
- u) Be responsible for managing the Code of Behaviour and report any player welfare incidents, spectator interference issues and other incidents that occur at the tournament to Tennis Australia and the relevant Member Association.
- v) Use his/her best endeavours and in cooperation with the Tournament Committee and/or Director to complete the tournament within the scheduled time, including, where necessary, making any changes to the order of play or conditions of play (including match format changes), subject always to the health and safety of the relevant Athletes and others;
- w) Assist the Tournament Director to accurately include Code violations, No shows, Late withdrawals in the TP file
- x) Not take part as an athlete in the tournament;
- y) In relation to matters for which there is no provision in these Regulations or any other relevant rules or regulations, have a general discretionary power to take such action as he/she considers appropriate.

CASE: Can a person undertake the role of both the Tournament Director and Tournament Referee at a tournament?

DECISION: No, there must be a separate Tournament Director and Tournament Referee assigned to each tournament.

2.2 Court Supervisors

The tournament is required to implement a Court Supervisor ratio above and beyond the provision of the tournament Referee. Court Supervisors will:

- a) Supervise courts as assigned by the Referee, and keep the Referee and tournament desk informed of progress on those courts, of any need for the Referee's presence court-side and of any other problems;
- b) Use their best endeavors to control the spectators and, where the spectators are impeding the progress of the match, address them respectfully and request their cooperation;
- c) Resolve any disputes between Athletes in matches played without a chair umpire, subject to the right of the court supervisor to refer such disputes to the referee;
- d) Ensure that the Rules of Tennis and these rules and regulations (including the TA Code of Behaviour) are observed, and take action in accordance with the TA Code of Behaviour.

2.3 Chair Umpires

The Chair Umpire will:

- a) Be the final on-court authority for all questions of fact arising during a match, including making any line or net calls where no line and/or net umpire is assigned (the Chair Umpire's decision on questions of fact will be final and binding on all parties and no one will have the right to appeal against or otherwise challenge that decision);
- b) Make the first determination on all questions of interpretation of the Rules of Tennis arising during a match, subject to the right of the chair umpire to refer the matter to the Referee and the right of an athlete to appeal the chair umpire's determination to the Referee;
- c) Delegate duties to line and net umpires (where assigned) and remove, rotate or replace any line and/or net umpires where the Chair Umpire decides it is necessary to improve the officiating of a match. A Chair Umpire may overrule a line and/or net umpire's decision only where the Chair Umpire is certain that a clear mistake has been made and the overruling is done promptly. Where a line and/or net umpire cannot make a decision, the Chair Umpire will make the relevant decision. Where the Chair Umpire cannot make a decision, the point will be replayed;
- d) Be responsible for all ball mark inspections on clay courts;
- e) Ensure that the net is at the correct height throughout the match;
- f) Be responsible for the timing of the warm-up and breaks in play (see Section 3 paragraphs 3.2 to 3.5 – Rest Breaks, Warm-Ups and Suspension of Play);
- g) Announce the score after each point in accordance;
- h) Mark an official scorecard during the match, and sign and return it to the Referee at the end of the match,
- i) Along with a report of any Code Violations issued pursuant to the TA Code of Behaviour;
- j) Use his/her best endeavours to control the spectators and, where the spectators are impeding the progress of the match, address them respectfully and request their cooperation;
- k) Ensure the appropriate number of tennis balls are provided for the match, including replacement balls (see Section 2 paragraph 6.22 - Balls);
- l) Be responsible for ball changes and for determining whether a ball is fit for play (the Chair Umpire will replace any lost balls or balls unfit for play as soon as reasonably practicable);
- m) Not officiate in any match in which he/she has a relationship with one (or more) of the Athletes that might be considered to give rise to a conflict of interests (for example, a family relationship);
- n) Ensure that the match is played fairly and in accordance with the Rules of Tennis and these Regulations.

2.4 Adjudicators

- The role can either be performed by standing at the net post, or if more practical sitting in the umpire's chair.
- On court person is responsible for overruling any clear mistakes immediately. A clear mistake would result in a let being played in the first instance and loss of point thereafter except in the case of a deliberate blatant action. A clear mistake on a clay court would result in the loss of the point on each occasion.
- Controlling Athlete behaviour e.g. use of Code, with assistance from Referee if necessary.
- Being aware of the score for both points and games.
- Assist with determining nets, lets, foul strokes, not-ups, etc.
- Monitoring foot faults and if necessary calling these.

2.5 Linespeople

In matches where line umpires are assigned, they make all calls (including foot-fault calls) relating to that line. The chair umpire has the right to overrule a line umpire if the chair umpire is sure that a clear mistake has been made. The chair umpire is responsible for calling any line (including foot-faults) where no line umpire is assigned.

A line umpire who cannot make a call shall signal this immediately to the chair umpire who shall make a decision. If the line umpire cannot make a call, or if there is no line umpire, and the chair umpire cannot make a decision on a question of fact, the point shall be replayed.

NOTE: Further information on becoming a tennis official can be found at <http://www.tennis.com.au/learn/ballkids-officials-coaches-and-volunteers/officials>

2.6 Officiating Requirements

The following table outlines the officiating requirements for each level of tournament. Please note that all officiating appointments are subject to availability.

a) Australian Money Tournament

Officiating Role	Platinum	Gold	Silver	Bronze
Referee	ITF White Badge or above / TA Level A accredited	ITF White Badge or above / TA Level A accredited	TA Level B accredited or higher	TA Level B accredited or higher
Court Supervisors	<u>1 to 4</u> 1 to 2 for Singles Semi-Finals*	<u>1 to 4</u>	<u>1 to 5</u>	<u>1 to 5</u>
Chair Umpires	Singles & Doubles Finals	Singles & Doubles Finals	Singles & Doubles Finals	Singles & Doubles Finals
Linespeople	Finals 2 per court#	Finals 1 per court	Finals 1 per court	Finals 1 per court

b) Junior Tournaments

Officiating Role	Platinum	Gold	Silver	Bronze
Referee	ITF White Badge or above / TA Level A accredited	ITF White Badge or above / TA Level A accredited	TA Level B accredited or higher	TA Level B accredited or higher
Court Supervisors	1 to 4 1 to 2 for Singles Semi-Finals*	1 to 4 1 to 2 for Singles Semi-Finals*	<u>1 to 5</u>	<u>1 to 5</u>
Chair Umpires	Singles Semi-Finals & Finals, plus Doubles Finals	Singles & Doubles Finals	Singles & Doubles Finals** (Recommended)	Singles & Doubles Finals** (Recommended)
Linespeople	Semi-Finals 1 per court Finals 2 per court	Finals 1 per court	Finals 1 per court (Recommended)	Finals 1 per court (Recommended)

c) AMT & Junior Tournaments

Guide ratio of number of match courts to minimum number of line umpires:

	One (1) court	Two (2) courts	Three (3) courts	Four (4) courts	Five (5) courts	Six (6) courts
One (1) Line Umpire per court	2 Line Umpires	3 Line Umpires	5 Line Umpires	6 Line Umpires	8 Line Umpires	9 Line Umpires
Two (2) Line Umpires per court	3 Line Umpires	6 Line Umpires	9 Line Umpires	12 Line Umpires		

Please make note of the following in regards to notations in the above tables.

Referee/Court Supervisors/Chair Umpires/Line Umpires will be allocated to the tournament by the relevant Officiating Development Coordinator in line with state selection processes.

Tournaments may require additional servicing if the court layout cannot be practically covered given the number of minimum court supervisors stated. An additional servicing of court supervisors will be decided in conjunction with the Tournament Referee, the Tournament Director and Tennis Australia Officiating Development Coordinator.

Tournaments are required to provide chair umpires and line umpires for finals of all events, however they are not expected to cover travel/accommodation costs.

If chair umpires cannot be allocated (either due to availability or costs as above), the referee must ensure that either a court supervisor remains courtside throughout the match or can appoint an appropriate person to perform an adjudication function.

* **Chair umpires** will not be required for the semi-final matches. The number of Court Supervisors required however, will increase from one (1) court supervisor to every four (4) main draw singles courts to one (1) court supervisor to every two (2) main draw singles courts. Please note the 1 to 4 ratio should be maintained for all other match courts.

** **Chair umpires** are recommended for the finals of the singles events as requested by the relevant Tournament Director. Where chair umpires are not used, Court Supervisors perform the adjudication function or remain courtside throughout the match.

Where line umpires require travel and/or accommodation, only one line umpire per court needs to be used (as per above table)

Court Supervisor Ratio

One (1) to Four (4) – Officials must not cover any more than 5 courts. Therefore additional court supervisors need to be allocated.

One (1) to Five (5) – Officials must not cover any more than 6 courts. Therefore additional court supervisors need to be allocated.

Please Note: *Anyone operating as an official must have a Tennis Australia Official Accreditation and a valid Tennis Australia Officials Membership.*

2.7 Conflict of Interest for Staff / Volunteers & Officials

Where reasonably practicable, a Referee must not accept an appointment as Referee of an Australian Ranking tournament in which he/she has a relationship with one (or more) of the Athletes in the tournament that might be considered to give rise to a conflict of interests (for example, a family relationship). Where it is not reasonably practicable to avoid accepting such an appointment, another official must be appointed to deal with any issues involving the Athlete(s) in question.

2.8 Recruitment and approval of officials

Officials will be provided to each tournament in accordance with these regulations in consultation with the relevant Officiating Development Co-coordinator (ODC). If the supply of these officials is not possible for any reason the ODC will advise the tournament as soon as possible.

Any request for these officiating requirements to be waived should be made to Tennis Australia and the relevant Member Association at least sixty (60) days prior to the tournament.

If not requiring officials for the event, the tournament must submit the list of chosen officials to the relevant Member Association via the appropriate ODC at least thirty (30) days prior to the event and gain approval that all officials chosen are accredited. Refer to Table of Contents, Paragraph 6 – Contact Details.

3. Matches played without a chair umpire

3.1 General rules

All Athletes should be aware of the following basic principles when playing a match without a Chair Umpire:-

1. If in doubt, the Athlete must give the benefit of any doubt to his/her opponent, in particular regarding line calls.
2. Each Athlete is responsible for all calls on his/her side of the net, however it should be noted that a Court Supervisor or Referee is permitted to reverse an incorrect line call. This reversal may be made by the official located within (whilst adjudicating) or outside the court enclosure. On the first occasion where this occurs the point will be replayed (regardless of whether it was a point winning shot or not) and for subsequent incorrect calls the Athlete loses the point.
3. If in the opinion of the Court Supervisor or Referee an incorrect line call is a deliberately blatant action, the offending Athlete will automatically lose the point and may receive a code violation for Unsportsmanlike conduct.
4. All "out" or "fault" calls should be made promptly after the ball has bounced and must be loud enough for the opponent to hear.
5. If an athlete incorrectly calls a ball "out" and then realises that the ball was good, the point should be replayed, unless it was a point winning shot or unless that Athlete made an incorrect "out" call earlier in the match. In these circumstances, the Athlete who called "out" loses the point.
6. A service "Let" may be called by either Athlete/team.
7. Foot faults may only be called by an official standing on court or by a chair umpire. Athletes may be requested to correct their foot faulting problem by a Referee or Court Supervisor, who will require the Athlete to make an effort during the match to rectify the problem. The receiver may not call a foot fault against the server.
8. The receiver must play to the reasonable pace of the server. Both Athletes must ensure they restrict their warm-up time, and minimise time between points and at change of ends.
9. To avoid controversy over the score, the server should announce the game score before starting a game and the point score prior to serving for each point, and must be loud enough for his/her opponent to hear.
10. If Athletes cannot agree on the score, they should calmly discuss the points/games that are disputed. All points or games which the Athletes agree on stand and only those in dispute should be replayed i.e. two Athletes cannot agree on whether the score is 40-30 or 30-40 and disagree only on who won the first point in the game. The game shall continue from 30-30, since both Athletes agree that they have won two points each.

When the game score is in dispute the same principles applies i.e. two Athletes cannot agree on 4-3 or 3-4, and disagree only on who won the second game. The match shall continue from 3-3, since both Athletes agree that they won three games each. The Athlete who received in the last game that was played will serve in the next game.

Where there is a score dispute, an athlete must make a reasonable effort to remember the actual score i.e. points/games played.

11. When an athlete has created an involuntary hindrance (ball falling out of pocket, hat falling off, etc.), the first time a "let" should be called and any similar hindrance thereafter will be ruled deliberate.

12. Any hindrance caused by an athlete that is ruled deliberate by the relevant official will result in the loss of a point.
13. Where a ball interrupts play, either by rolling/bouncing onto the court, and/or creating a visible interruption behind the court a let should be played. Either Athlete can call a let in these circumstances provided they do so in a timely manner. Where this is between a 1st and 2nd serve, a second serve only should be played.
14. In a situation where a ball is lying on the court at the commencement of the point (1st or 2nd serve) it will be deemed to be part of the court during the rally. Movement of this ball during the rally does not constitute hindrance.
15. Athletes are entitled to request their opponent to remove the ball from the court prior to the commencement of the point.
16. When ball persons are not available, all balls on your side of the net are your responsibility to pick up and return directly to the server.
17. The receiver should not return the first service if it is an obvious fault – let it go by or ground it.
18. Either Athlete is allowed to call a foul shot or “not up”, providing this occurs in a timely manner.
19. Athletes should only leave the court for a toilet break, or any other reason, with the permission of Referee or Court Supervisor.
20. If at the completion of a match, the Athletes involved realise that the scoring format used was incorrect, the match result shall stand provided all Athletes have left the court enclosure. If the mistake is realised before the Athletes have left the enclosure, the correct scoring format should be used to finalise the match. If this is not possible (i.e. the match has progressed beyond the point where the correct scoring format can be implemented), then the score based on the incorrect format stands. (Refer to the ITF Rules of Tennis section “ Correcting Errors”).
21. Where a Code Violation second offence / Point Penalty is determined by the Referee or Court Supervisor this may be applied at any time during the specific game where the offence occurs. If the point penalty cannot be issued during the specific game a code violation second offence will still be issued. It should be noted that any code violation second offence between games is deemed to be part of the following game.
22. Screaming regularly and loudly, whether in relation to winning and/or losing a point is likely to cause interference to play on nearby courts and may be considered Unsportsmanlike Conduct.
23. Constant overt celebration directed at an opponent may be considered intimidation, and therefore unsportsmanlike conduct.
24. If an athlete is unhappy with his/her opponent’s actions or decisions, he/she should call the Referee or Court Supervisor immediately.

3.2 *Matches played on Clay Courts*

For matches played on clay courts, there are some additional procedures that all Athletes should follow:

1. A ball mark can only be checked on a point ending shot, or when play is stopped (a return is permitted, but then the Athlete must immediately stop).
2. Athletes are prohibited from checking the mark of the ball on their opponent’s side of the court, unless invited by their opponent to do so.

3. If an athlete erases the mark, he/she is conceding the call.
4. If there is a disagreement over a ball mark, the Referee or Court Supervisor can be called to make a final decision. However, where an athlete is consistently making incorrect calls resulting in numerous ball mark inspections, a Code Violation may be applied.
5. If an athlete calls a ball "out", he/she should, in normal circumstances, be able to show the correct mark.
6. If an athlete incorrectly calls a ball "out" and then realises that the ball was good, the Athlete who called "out" loses the point. Athletes who do not fairly follow these procedures could be subject to the Hindrance Rule and the Unsportsmanlike Conduct provision of the Code of Behaviour. Any questions on these procedures should be referred to the Referee.

3.3 *Etiquette*

1. Athletes are expected at all times to shake hands with their opponent(s) at the completion of a match.
2. Do not enlist the aid of spectators, including parents, coaches in making line calls, or attempting to determine the score or other on-court matters.
3. Wait until a point is over before walking behind a court where a match is in progress.
4. To retrieve a ball from another court or to return a ball to another court, wait until the Athletes have completed a point.
5. Do not stall, sulk, complain or practice gamesmanship.
6. In doubles, when returning service, the partner of the receiver should generally call the service line for him/her. The receiver should generally call the centre and side service lines. The call needs to be loud enough to stop their opponents/partner playing.

Section 3: Player related rules & regulations

1. Entry & Eligibility Rules

1.1 Eligibility

a) Australian Money Tournaments (Open Competition)

AMT's are open to male and female tennis athletes based on merit, but only once athletes have reached their thirteenth (13th) birth year (1st January onwards). However, athletes will not be eligible to use points earned from AMT events towards their Australian Ranking until the end of the month once they have turned 15 years of age.

Exceptions to the AMT entry rule for players in their twelfth (12th) birth year need to be made via the below online application form – <https://tatournaments.wufoo.eu/forms/2019-amt-age-eligibility-exemption-application>

b) Junior Tournaments

JT's are open to all male and female tennis athletes that are 12, 14, 16, 18 and under as at the time of the tournament. For purposes of this Rule, the athlete's age as of the last day of the month that the tournament finishes shall be used.

CASE: A tournament is scheduled to take place from March 29 to April 2. Is an athlete turning 13 years of age on April 13 eligible to play in the 12/u event?

DECISION: No, this Athlete will be ineligible to enter the 12/u age group and must enter the 14/u age group as they will be over the age limit as at April 30, which is the last day of the month that the tournament finishes in.

c) Platinum Tournaments (12 & 14 Nationals and December Showdown and related Qualifying events):

Players under the age of 10 shall not be eligible for entry into any Platinum tournament. The player's age as of the first day of the tournament Main Draw shall be used.

Players eligible to compete in 12/u competitions may also compete in tournaments for players 14/u.

d) Grounds for refusing entry

Tennis Australia and/or the applicable Member Association reserve the right to refuse an athlete or other participant entry into an ATM or JT and/or or venue for such a tournament where Tennis Australia or that Member Association determines that the applicable athlete or participant:

- Is currently suspended by Tennis Australia, a Member Association, the ITF, or another applicable tennis authority, or has any outstanding financial liability or otherwise to any of these organizations, or is otherwise ineligible under any applicable code, rule, regulation, policy or procedure;
- Is not of good standing or character or has or will likely embarrass or bring into ridicule or disrepute Tennis Australia, the Member Association, the applicable tournament and/or the sport of tennis;
- Has failed to comply with any conditions of entry or other applicable rule, regulation, policy or procedure provided that Tennis Australia must prior approve any Member Association's decision not to refuse an athlete or participant's entry: or
- Is not permitted to play in a tournament for prize money as a result of visa conditions imposed on them by the Australian Immigration Department or is otherwise not permitted to play in a tournament as a result of conditions imposed by the police, any other government authority or court of law.

1.2 My Tennis Membership

All Athletes entering Australian Ranking Tournaments agree, as a condition of their entry, to register for an annual My Tennis Membership Number, to accept the related terms and conditions and pay the appropriate fee and hence become a member of an affiliated tennis club or member association. Failure by an athlete to register for a My Tennis Number and to accept the related terms and conditions may result in the rejection of that Athlete's entry or non-awarding of Australian Ranking points.

NOTE: An athlete can sign up for a *My Tennis* Membership number by calling the Customer Support team on 1800 PLAY TENNIS (1800 752 983).

1.3 Online Entry Requirement

For all 2019 Australian Ranking events, it is a mandatory requirement for all entries to be submitted online via the official tournament entry system available for each tournament at <http://tournaments.tennis.com.au>

Any entries that are received by tournaments outside of the online entry system must not be accepted.

CASE: An athlete wishes to enter both the Men's Open Singles and Open Mixed Doubles event. Can he enter the tournament offline?

DECISION: Because the open mixed doubles event does not attract Australian Ranking points, he is permitted to enter via an offline method for this particular event. However, the Men's Open Singles entry must be submitted online via the <http://tournaments.tennis.com.au> website as this is an Australian Ranking event.

1.4 Entry Information

To enter an Australian Ranking event, an athlete must submit an electronically validated entry form containing the following information, along with the appropriate entry fee, by the specified closing deadline:

- a) His/her My Tennis Membership number;
- b) An undertaking confirming that the Athlete has read, and agrees to be bound by and to comply with, the conditions of entry, including the conditions listed in Appendix 2 (Tennis Australia recommended tournament conditions);
- c) A valid residential mailing address, including state of residency and postcode;
- d) A valid email address;
- e) A contact phone number that will be operational prior to and during the tournament;
- f) His/her date of birth and gender.

1.5 Entry Deadline / Withdrawal Procedures

- a) Entry Deadline: Either Ten (10) or Fourteen (14) days prior to the start of qualifying (11: 59pm local time).
- b) An event may apply through their Member Association for an extension of the entry deadline in extenuating circumstances (e.g. failure of the online entry system) or when in consultation with the MA it is decided that an extension of the entry deadline is prudent for the purpose of ensuring the viability of the event. Please note, the application of this clause and the granting of an extension does not apply to individual athletes and their individual circumstances
- c) Withdrawal Deadline (Main Draw and Qualifying): Seven (7) days prior to the start of qualifying or in the case where there is no qualifying, Seven (7) days prior to the start of the main draw (11:59pm local time).

NOTE: The entry deadline for National Junior Championships is Twenty-eight (28) days prior to the start of qualifying (11:59pm local time)

- d) It is the athlete's responsibility to make all entries and withdrawals and to check their position on the Entry List.
- e) Athletes submitting a late entry into AMT's can only be included into the draw via the wildcard process at the discretion of the relevant Member Association or Tennis Australia.
- f) Entries must have been open for a minimum of six weeks prior to the entry closing date. All tournaments must be published on the Internet at least eight weeks prior to commencement.

1.6 *Entering two tournaments at the same time*

An athlete may enter and play in two tournaments (including qualifying draws) where any of the dates of those tournaments overlap (as published on the relevant tournament information page(s) on the Tennis Australia Website), however they must complete all commitments to the earlier tournament by the day before their first match of the second tournament is scheduled.

Under no circumstances can an athlete be an active participant in two overlapping tournaments on the same day.

Example:

Tournament A runs from Sunday to Wednesday and tournament B runs from Wednesday to Saturday in the same week. The dates for those tournaments overlap on the Wednesday.

The dates will also be considered to overlap where the event in tournament A finishes on the Wednesday morning and the event in tournament B does not start until the Wednesday afternoon.

A tournament is under no obligation to accommodate scheduling requests from athletes to enable them to play in overlapping tournaments, including athletes who have elected to play tournaments across different States/Territories.

In addition, an athlete may not retire or fail to complete any of their matches from the first tournament in order to compete in an overlapping tournament, after the draws for the overlapping tournament are made public.

An athlete may be able to participate in two tournaments that overlap, if the tournaments that take place at the same venue, subject to prior approval by TA. In this instance, the player must have completed his/her commitments to the previous week's tournaments **before** stepping on court for their first match of the following tournament. Neither tournament should have to alter their schedules to enable this to happen.

An athlete is deemed to be in breach of this regulation if they:

- 1) Actively participate in overlapping tournaments on the same day.
- 2) If they fail to appear for their match i.e. 'No-show' in the previous tournaments match **ON THE DAY OF THE OVERLAP**, but play in the overlapping tournament on that same day;
- 3) Medically or otherwise, fail to complete their commitment or retire (even with production of a verifiable medical certificate) from a previous tournaments match, **ON THE DAY OF AN OVERLAP**, but then play in an overlapping tournament **ON THAT SAME DAY**;
- 4) Medically or otherwise, fail to complete their commitment or retire (even with production of a verifiable medical certificate) from a match in the previous tournament on the day prior to the Athlete's first scheduled match in an event of an overlapping tournament;

- 5) Actively seek to encourage their doubles partner to commit (3) and/or (4) above, in order to avoid a potential breach of this regulation. If the relevant referees in consultation agree that the non-withdrawing/non-retiring athlete has not sought to contrive circumstances to allow them to play in the overlapping event, then the non-withdrawing/non-retiring athlete will be allowed to play the overlapping event.

Avoiding a breach of this regulation and penalties.

- 1) The athlete, in entering overlapping events, is solely responsible for remaining in contact with both **REFEREES** to avoid becoming in breach of this regulation.
- 2) An athlete will be excused of any Late Withdrawal Penalty from the second tournament if they are still committed to a previous week's tournament on the day on which their first match in an event of an overlapping tournament is scheduled, provided the Athlete:
 - a) Informs the REFEREE of the overlapping tournament by 5pm on the day prior to their first scheduled match that they remain committed elsewhere: or
 - b) In the case of them having a match scheduled after 5pm in the previous week's event, contact the referee of the overlapping tournament in advance of the 5pm deadline to inform them that upon winning, they would no longer be able to play in that overlapping tournament.
 - c) In the case of (b) above, if the Athlete loses they are no longer committed to the previous week's tournament and can play the events of the overlapping tournament. If the Athlete wins, the referee of the overlapping tournament shall withdraw the athlete from the overlapping event(s) without penalty.

Penalty for breach of this rule.

An athlete found in breach of this rule will;

- 1) Lose all Australian Ranking points obtained from both of the overlapping events;
- 2) Incur disciplinary action in accordance with the Tennis Australia Code of Behaviour for Tournaments and Weekly Competitions for playing two tournaments at the same time;
- 3) An athlete in breach of this rule that is still an active participant in either or both of the overlapping events must be immediately defaulted by both referees, from such events that caused the breach.

These penalties may be invoked retrospectively at any time within a twelve-month ranking rollover period starting from the date on which the offending athlete was credited with the relevant AR ranking points.

This rule also applies to athletes remaining an active participant in an AR event and an ITF/WTA/ATP event at the same time, but in this instance, the athlete would be in breach of both AR regulations as well as those of the relevant international tennis organisation.

CASE: *An athlete has entered tournament A from Friday to Sunday and tournament B Sunday to Wednesday. The athlete has won all of their matches at tournament A, and is scheduled to play the finals on Sunday. The athlete informs the referee that they will not play the final on Sunday, in order for them to play the qualifying event at tournament B. Is this athlete in breach of this rule?*

DECISION: *Yes. By failing to complete their commitment to tournament A, for the sole purpose of playing in tournament B, this player is in breach of this rule. .*

CASE: *An athlete has entered tournament A from Friday to Sunday and tournament B Sunday to Wednesday. The athlete withdraws from tournament A on Thursday before play is due to start on the Friday and after the draws for tournament B has been released. The athlete then competes in tournament B on Sunday. Is the athlete in breach of this rule?*

DECISION: Yes. The athlete did not complete their commitment to tournament A, and withdrew after the draws for tournament B was published.

The athlete would not be in breach of this rule if they withdrew from both tournaments. The player will only be penalised for withdrawal after the withdrawal deadline for tournament A.

CASE: An athlete has entered tournament A from Friday to Sunday and tournament B Sunday to Wednesday. The athlete has lost in the singles semi-finals on the Saturday of tournament A, are they still able to play in tournament B?

DECISION: Yes, provided the athlete have no further matches to play in tournament A (play-off, consolation or doubles). Then the athlete has completed his/her commitments to tournament A, and they are free to compete in tournament B on the following day.

CASE: An athlete has entered tournament A from Friday to Sunday and tournament B Sunday to Wednesday. The athlete retires injured from the consolation semi-final of tournament A on Saturday, but plays the first round of qualifying in tournament B on Sunday. Is the athlete in breach of this regulation?

DECISION: Yes. By failing to complete all of his matches in tournament A, regardless of injury or illness, this athlete did not complete his commitment to tournament A. By playing in tournament B, this athlete is in breach of this rule.

1.7 Playing 'in age' at National and State Junior Championships

a) December Showdown / Australian Championships

Athletes should play 'in age' (both singles and doubles) at National Championships (12s, 14s, 16s & 18s) when all age groups are played concurrently at the same National Championships.

Athletes may however approach Tennis Australia before the entry deadline to request permission to enter one Age Group higher than they would be eligible based on the common age entry date, refer to Section 3, Paragraph 1.7 (b) below.

If Age Groups are played in different weeks at the same National Championships, an athlete may compete in their own age group and in one age group higher in a different week (acknowledging the implications of the "one event per week" rule)

b) National Grasscourt, National Claycourt and State Championships

Playing up in "State Championships" having previously won another State Championship in the 12 preceding months.

Once an athlete either wins or makes a final (singles only) in a State Junior Championship in their correct Age Group in the same calendar year, they can apply to the Member Association to play 'out of age' in subsequent State Championships in the preceding 12 months. This only applies to the New South Wales, Queensland and Victorian State Championship events.

Playing up in "National Championships" having previously won a National Championship in the 12 preceding months.

However, once an athlete either wins or makes a final (singles only) in a National Junior Championship in their correct Age Group in the preceding 12 months, they can apply to Tennis Australia to play 'out of age' when age group nationals are placed concurrently.

Athletes can however only compete in one (1) age group (both singles and doubles) where National Championships are played concurrently. If National Championships are not played concurrently, Athletes are eligible to enter and compete in older age group championships.

1.8 **Entry Definitions**

a) **Direct Acceptances**

Entered athletes accepted directly into the Main Draw or Qualifying Draw by virtue of their Australian Ranking.

b) **Wildcards**

Wildcards can be awarded at any level of Australian Money Tournament and at a Platinum level of the Junior Tournaments.

Wildcards cannot be issued for Junior Tournaments events of a Gold status and below. However, tournaments can issue main draw or qualifying wildcards for internationally based athletes with the prior approval of Tennis Australia.

Wildcards are athletes included in the draw at the sole discretion of the tournament, with approval from Tennis Australia or the relevant Member Association. Wild Cards may be seeded. Wild Cards must be named at the time the draw is made and Wild Cards who withdraw may not be replaced with new Wild Cards after the appropriate draw is made. Any such vacancies shall be filled by the next eligible athlete on the acceptance list, or in the case of Main Draw, by Lucky Losers, drawn and placed at the same time as the qualifiers. The Qualifying Competition commences when the first ball of the first Qualifying match is struck.

No athlete who has entered and been accepted into the Qualifying of the tournament may be named as a Wild Card after the Qualifying Competition has commenced.

A tournament may not offer a Wild Card or accept the entry from any athlete who has either accepted a Wild Card or been committed by an entry to another tournament that overlaps in dates.

Tournaments may not receive compensation and athletes may not offer compensation in exchange for the awarding of a wildcard.

All wildcards should be determined in consultation with the Head Coach of the relevant National Academy or Member Association.

c) **Alternates**

Athletes who are ranked lower than the direct acceptances into Main Draw and Qualifying under the Australian Rankings, at the time of the Entry Deadline.

d) **Qualifiers**

Athletes who are included in the Main Draw as a result of their success in the Qualifying competition.

e) **Lucky Losers**

Athletes who have lost in the final round of the Qualifying competition and if more Lucky Losers are required for substitutions, those athletes who have lost in the previous Qualifying round(s).

f) **Byes**

A Bye is where an athlete advances automatically to the next round of the draw without being drawn to play a match.

If Byes are required in a traditional draw, the number of Byes is calculated by subtracting the number of entries from the draw size.

Byes will first be allotted to the seeded athletes in the decreasing order of seeding. Any remaining Byes will be allotted evenly throughout the draw.

1.9 Acceptance Lists (for tournaments accepting all entries until the advertised entry closing date)

Each Australian Ranking Tournament must produce a pre-event Acceptance List.

The acceptance list is designed to display the following:

- a) Athletes accepted directly into the main draw and qualifying events of a tournament based on their latest Australian Ranking;
- b) Athletes that have received wildcards into main draw or qualifying events;
- c) Athletes that have not been accepted into the tournament
- d) Athletes that have withdrawn from the tournament

Please note that players that enter the tournament late and receive a qualifying wildcard cannot move into the main draw as a direct acceptance, regardless of their Australian Ranking.

1.10 Acceptance Lists (for tournaments accepting entries on a first-in, first-served basis until the advertised draw size has been filled)

If a tournament has advertised to accept a restricted amount of entries until the event is sold out, players will be prioritised based on the entry date and time stamp.

Please note, only tournaments with a Silver or Bronze points status (AMT or JT) can implement an entry procedure that prioritises players based on time of entry.

Once events have been filled, each Australian Ranking event must produce an Acceptance List. The acceptance list must be designed to display the following:

- a) Athletes accepted directly into the main draw and qualifying events of a tournament based on their latest Australian Ranking;
- b) Athletes that have received wildcards into main draw or qualifying events;
- c) Athletes that have not been accepted into the tournament
- d) Athletes that have withdrawn from the tournament

Please note that players that enter the tournament late and receive a qualifying wildcard cannot move into the main draw as a direct acceptance, regardless of their Australian Ranking.

1.11 Acceptance List Ranking Ties

When two or more athletes have the same total number of points, ties shall be broken as follows:

- a) The athlete with the most total singles points, and if still tied, then,
- b) The highest number of points from one singles tournament, then, if needed, the second highest, and so on, and if still tied, then
- c) Drawn by lot by Tennis Australia

1.12 Administrative Error on Acceptance Lists

If an administrative error is made on a Tournament Athlete Acceptance List and an athlete is not included or too many Athletes are accepted into the Tournament, the Acceptance List will be corrected at the earliest opportunity in accordance with the Australian Rankings.

1.13 Doubles Entry

Platinum JTs and Platinum AMTs have the option to have either on-site sign-in or on-line doubles entries or a combination of both.

All other events must have an on line doubles entry process only.

OPTION A: An on-site sign-in entry system

- Sign-in will close at a pre-designated time and date set by the tournament.
- Athletes must sign-in in person at the tournament office.
- One member of the doubles team may sign in for the team.
- Athletes not nominating a partner during sign-in will not be placed in the draw. It is not the tournament's responsibility to find a partner for an athlete signing in for a doubles event without a partner.
- The tournament referee reserves the right to accept timely telephone entries.
- Athletes who otherwise fail to sign-in will not be included in the Doubles Draw as direct acceptances.
- Wildcard teams do not need to sign-in but must be in contact with the referee in order to confirm that they will accept their wildcard into the event.
- For the purposes of this rule, an online entry prior to the tournament constitutes a sign-in entry.

OPTION B: An online entry system prior to the tournament

- Tournaments offering on-line doubles entry may also advertise that they will accept additional on-site doubles sign-ins and that additional on-site entries must be subject to a sign-in deadline.
Tournaments are not obliged to accept on-site doubles entries when using the online doubles entry system
- All doubles team entries must be received by the tournament director before the entry closing date and/or advertised sign-in time whichever is applicable.
- Both athletes must nominate their partner during the entry process for the entry to be accepted.
- If entering a doubles event, athletes must enter in the same age group as their singles event.
- It is the athlete's responsibility to contact the tournament if they want to confirm their doubles partner or believe a mistake has been made prior to the draw being published.

For all events other than Platinum AMTs and Platinum JTs, if an athlete has entered a doubles event on-line without nominating a partner, the tournaments should pair the individual entries together.

The procedure for pairing these athletes will be as follows:

- Paired up with the next highest ranked athlete without a partner.
- Once all ranked athletes have been allocated a partner, any remaining unranked athletes will be paired by random draw.

- The pairing of unallocated partners will only be undertaken once and will not be redone if any athlete withdraws from the event.

NOTE: At Platinum level events, the tournament may facilitate the creation of teams between individually entered athletes, but is not obliged to follow the automatic pairing process.

1.14 System of Merit – Singles

Method A: Athlete with current Australian Ranking.

In determining acceptances of athletes for the singles main draw and qualifying, athletes must be selected in accordance with their latest Australian Ranking at the entry deadline.

a) Ties

In the event of a tie on the acceptance list between athletes for positions, that tie shall be broken as follows:

- The athlete with the most total singles points, and if still tied, then
- The highest number of points from any one singles tournament, then, if needed, the second highest, and so on, and if still tied, then
- Drawn by lot by the Tournament Referee.

- ### b) Athlete without current AR but with current ATP/WTA ranking/Junior ITF that is converted to a 'temporary AR' by either the relevant Member Association or Tennis Australia.
- Once an athlete has a temporary AR calculated they will be then placed in a relative position on the Acceptance List as if this was their *actual* current AR.

NOTE: The onus is on any International athletes with a current ATP/WTA Tour Ranking or Junior ITF world ranking to notify the tournament of their intention to play and also to enter accordingly, in addition to informing the event that they actually hold a current international ranking.

Notwithstanding this, all events and MAs should be alert to the possibility of international athletes entering who may hold current international rankings before releasing Acceptance Lists.

International and Australian athletes currently playing in the USA college system and with a current US College Ranking Ratio can be issued a main draw or qualifying wildcard if they are available but will not be issued with a temporary AR for acceptance purposes.

Method B: Athletes without an Australian Ranking (Inc. temporary ARs)

All Athletes who do not possess an Australian Ranking shall be positioned at the bottom of the acceptance list in random order.

NOTE: On-site alternates will not be allowed to enter AMT/JT events

1.15 System of Merit – Doubles

In determining acceptances of athletes for the doubles main draw, teams must be selected in accordance with their latest combined Australian Ranking at the time the draw is made. For the purposes of this rule, "temporary ARs" can also be taken into consideration.

The order of priority for doubles is the following:

1. Two athletes, both with an Australian Ranking, in order of the combined Australian Ranking of the doubles pair
TIE: team with the Athlete with the highest individual AR, then if still tied, draw
2. One athlete with an Australian Ranking and one without an Australian Ranking, in order of the one Australian ranked athlete
TIE: team with the ranked Athlete with the highest individual AR, then if still tied, draw.
3. Two athletes, both without an Australian Ranking to be determined by random draw

1.16 Dress and Equipment

All athletes competing in an Australian Ranking tournament agree to comply with the Tennis Australia Dress and Equipment Regulations. These will be applied at the discretion of the Referee in accordance with normal practice and reference to the Tennis Australia Code of Behaviour. Refer to Appendix 5.

2. Withdrawals / Retirements / No Shows / Doubles Substitutions

2.1 Main Draw Singles (Elimination draw format) – Seeded Athletes

The below seed replacement procedure should be followed for:

Any vacancy in the main draw singles created by the withdrawal of a seed prior to 5pm on the day before the start of the main draw (in a tournament using qualifying, followed by main draw format); as well as

Any vacancy in the main draw singles created by the withdrawal of a seed before the start of the first round match of the main draw (in a tournament using main draw only format);

- If the withdrawal is among seeds 1 to 4, the 5th seed is moved into the open position and the 5th position shall be filled by the next highest ranked athlete eligible to be seeded.
- If the withdrawal is among seeds 5 to 8 (32 draw), 5 to 16 (64 draw) or 17 to 32 (96 and above draw), the open position shall be filled by the next highest ranked athlete eligible to be seeded.
- If the withdrawal is among seeds 5 to 16 (96 and above draw), the 17th seed is moved into the open position and the 17th position shall be filled by the next highest ranked athlete eligible to be seeded.
- The position vacated by that next highest ranked athlete shall then be filled by:
 - The next athlete on the original acceptance list or a “Bye” if no eligible athletes are available when there is no qualifying competition held; or
 - Eligible Lucky Loser if qualifying competition has commenced.

Any vacancy created by the withdrawal of a Seed after the applicable deadlines mentioned above, shall be filled by:

- An eligible Lucky Loser if qualifying competition has commenced; or
- A “bye” where a qualifying event was not required.

NOTE: Draws with two (2) seeds (8 draw) and four (4) seeds (16 athlete elimination draw), the open position created by the withdrawal of a seed shall be filled by the next highest ranked athlete eligible to be seeded.

2.2 Main Draw Singles (Round Robin draw format) – Seeded Athletes

The below seed replacement procedure should be followed for:

Any vacancy in the main draw singles created by the withdrawal of a seed prior to 5pm on the day before the start of the main draw (in a tournament using qualifying, followed by main draw format); as well as

Any vacancy in the main draw singles created by the withdrawal of a seed before the start of the first round match of the main draw (in a tournament using main draw only format);

- If the withdrawal is the highest seed of any particular pool, the 5th seed (in the case of 4 round robin pools being used), or the 9th seed (in the case of 8 round robin pools being used) is moved into the open position created by the seed withdrawal, and the vacated seed position shall be filled by the next highest ranked athlete eligible to be seeded.
- If the withdrawal is the second highest seed of any particular pool, the athlete who is next highest ranked athlete eligible to be seeded shall move into the vacated seed position.
- In either of the above situations, the position vacated by the movement of the next highest ranked Athlete eligible to be seeded shall then be filled by:
 - The next athlete on the original acceptance list or a “Bye” if no eligible athletes are available when there is no qualifying competition held, or
 - Eligible Lucky Loser if qualifying competition has commenced.

Any vacancy created by the withdrawal of a Seed after the applicable deadline mentioned above, shall be filled by:

- An eligible Lucky Loser if qualifying competition has commenced; or
- A “bye” where a qualifying event was not required, or not played

2.3 Qualifying Singles Draw

Any vacancy in a qualifying draw created by the withdrawal of a seed at:

- an AMT or JT event prior to 5pm on the day before the scheduled first day of the qualifying event, shall be filled as follows:
 - 4 Qualifiers draw
 - Where the seeded withdrawal is seeded 1-4 then the 5th seed (and 6, 7, etc for additional withdrawals as they occur) shall be moved to the vacated position and then the next Athlete to be seeded shall be moved to fill the place vacated by the 5th seed. The position vacated by the next highest ranked athlete shall then be filled by the eligible Alternate or a ‘bye’ if no eligible athletes are available.
 - Where the seeded withdrawal is from seeds 5- 8, the next highest ranked athlete eligible to be seeded will be moved into the position vacated by the seed who withdraws. The position vacated by the next highest ranked athlete shall then be filled by the eligible Alternate or a ‘bye’ if no eligible athletes are available.
 - 8 Qualifiers draw
 - Where the seeded withdrawal is seeded 1-8 then the 9th seed (and 10, 11, etc for additional withdrawals as they occur) shall be moved to the vacated position and then the next Athlete to be seeded shall be moved to fill the place vacated by the 9th seed.

The position vacated by the next highest ranked athlete shall then be filled by the eligible Alternate or a 'bye' if no eligible athletes are available.

- Where the seeded withdrawal is from seeds 9-16, the next highest ranked athlete eligible to be seeded will be moved into the position vacated by the seed who withdraws. The position vacated by the next highest ranked athlete shall then be filled by the eligible Alternate or a 'bye' if no eligible athletes are available.

Any vacancy in the qualifying draws created by the withdrawal of a seed which occurs between 5pm the day before qualifying and the start of the qualifying event shall be filled by an eligible Alternate or a 'bye' if no eligible athletes are available.

2.4 Main Draw or Qualifying Consolation

Any vacancy in either the Main Draw or Qualifying consolation event created by the withdrawal of a seed shall in all instances be replaced by a "bye" once the draw has been made. There shall be no movements of seeds due to seed withdrawals after the draw has been made.

2.5 Main Draw Doubles

a) **Platinum AMT & JT events with on-site sign in procedure (this includes events that advertise an on line doubles entry and continue to accept on-site sign-in entries):**

Any vacancy in the main draw doubles created by the withdrawal of a seed between the time of the release of the doubles Main Draw and the release of the Order of Play that first includes doubles matches, shall be filled as follows (that there is only a seeded vacancy in doubles for "online entry" where both athletes in a team withdraw):

- If the withdrawal is among seeds 1 to 4, the 5th seed is moved into the open position and the 5th seed position shall be filled by the next highest ranked team eligible to be seeded.
- If the withdrawal is among seeds 5 to 8, next highest ranked team eligible to be seeded move into the open position.
- The position vacated by the movement of the next highest ranked team shall then be filled by the next team on the acceptance list (first alternate) or a 'bye' if no alternates are available.

If a seed withdraws after the deadline mentioned above, the open vacant position shall be filled by the next team on the acceptance list (first alternate) or a 'bye' if no alternates are available.

b) **Events with an online entry for doubles:**

Any vacancy in the main draw doubles created by the withdrawal of a seed by 5pm one day before the scheduled first day of doubles shall be filled as follows:

- If the withdrawal is among seeds 1 to 4, the 5th seed is moved into the open position and the 5th seed position shall be filled by the next highest ranked team eligible to be seeded.
- If the withdrawal is among seeds 5 to 8, next highest ranked team eligible to be seeded moves into the open position.
- The position vacated by the movement of the next highest ranked team shall then be filled by the next team on the acceptance list (first alternate) or a 'bye' if no alternates are available.

If a seed withdraws after the deadline mentioned above, the open vacant position shall be filled by the next team on the acceptance list (first alternate) or a 'bye' if no alternates are available.

c) **Doubles Consolation:**

If a seeded team withdraws from a doubles consolation event, the place in the draw will be replaced with a "bye". There shall be no movements of seeds due to withdrawals in a doubles consolation event.

2.6 **Vacancies and Substitutions**

Vacancies shall be filled with substitutes in accordance with the following:

a) **From the Entry Deadline to the Withdrawal Deadline:**

- Athletes will be able to withdraw online up until the withdrawal deadline and the online entry process will automatically make adjustments to the event Acceptance List subsequent to any withdrawals.
- Entered athletes will remain in the same relative order once the entry list is first released unless any administrative errors are determined to have occurred.
- Vacancies in the Main Draw or Qualifying Acceptance lists shall be filled by entered athletes in accordance with this relative position.

b) **From the Withdrawal Deadline until the Commencement of Qualifying:**

- Vacancies in the Qualifying and Main Draw shall be filled by entered athletes selected in accordance with the applicable System of Merit as displayed on the Acceptance List.
- If athlete(s) need to be moved into the main draw from the qualifying list after the qualifying draw is made but before the qualifying event has started, priority remains with those athletes higher on the original acceptance lists who have not already secured a place in main draw (e.g. have a bye in the final round of qualifying), as opposed to athletes who may be seeded highest in the qualifying draw (seedings are done on latest available rankings).
- After the withdrawal deadline, Athletes must withdraw by advising the tournament of their intention to do and if required provide the necessary supportive documentation.

c) **After commencement of the Qualifying competition:**

- **Main Draw:** Vacancies in the Main Draw may only be filled by Lucky Losers.
- **Qualifying:** Vacancies in the qualifying draw will be filled by an eligible alternate in accordance with the original acceptance list who signed in at least 30mins prior to the commencement of the first qualifying match.

d) **Events without qualifying (after Main Draw matches have commenced)**

Vacancies in the Main Draw shall be filled by entered athletes in accordance with the original acceptance list who have signed an alternates list. Principles for Alternates sign-in shall follow those of Lucky Loser sign in.

2.7 **Doubles Withdrawals / Substitutions**

a) **Doubles Team Withdrawals (regardless of an event taking on-line or onsite entries or a combination of both)**

The following guidelines apply when an entire doubles team withdraws after a draw is made.

1. When an entire team withdraws, the team will be replaced by an Alternate team or a "Bye" if no Alternate team is available. Doubles Alternates sign in procedures follow those guidelines of Singles Lucky Loser/Alternate procedures.

2. Further adjustments may be required to the draw based on the Seed Withdrawal rule

b) Doubles Team-member Substitution (regardless of on line or on-site doubles entries)

The following guidelines apply when one member of a team withdraws after a draw is made.

1. When one member of a team withdraws and correctly-entered alternate teams are available, the alternate teams should have first priority for filling the vacancy in the draw. In this instance the Seed Withdrawal rule applies.
2. At all levels of AMTs and JTs, and where no correctly entered alternate teams exist or none are available (pursuant to normal sign in processes), every effort should be made to find a replacement Athlete when one member of a doubles team cannot compete
3. The withdrawing team member must provide to the tournament Referee *bona fide* notice of their withdrawal (email, telephone, in person) before the substitute Athlete can play. The Referee is the sole judge of whether the communication of the intent to withdraw is legitimate.
4. The substitute athlete must be a Tennis Australia registered Athlete but need not be entered in the tournament.
5. The substitute must not be already accepted into the relevant doubles draw unless that athlete was originally combined with another athlete who also withdrew. In this case, the new team created by combining the remaining athletes will be placed randomly into one of the newly vacated places in the draw. In this case, a Bye will take the place of the other vacated position.
6. If the team was originally not seeded, then any newly created team cannot be included in the draw if they have a combined AR (including Protected Rankings) that is lower than the last seeded team.
7. If the team was originally seeded, then any newly created team should have a combined AR (including Protected Rankings) that is not higher than the next highest seeded team. The exception is when the original team was seeded #1 or #2 in which case the combined ranking of the newly created team is of no consequence.
8. The substitution can only be made before the start of that pair's first doubles match. A walkover in the pair's first match constitutes a match played whereas a 'bye' does not.
9. Any such substitutions must be approved by the Tournament Referee. Any substitution will then be altered on the draw following this approval and re-published as soon as possible.
10. If a partner withdraws within 30mins of the first match of the team, or one partner is a "no show", the remaining partner will have 30mins (either from the time the withdrawal is notified to the event, or from the time the "no show" is declared) to find a new partner, providing the aforementioned provisions are satisfied.

If another suitable partner cannot be found, a walkover shall be awarded. In no circumstances should the non-offending partner be penalised under the Code of Behaviour.
11. Athletes not nominating a partner as part of their original entry or requesting the assistance of tournament staff to locate a substitute partner must compete in any arranged pairing otherwise they risk disciplinary action via the Code of Behavior for a late withdrawal with no refund being issued.

2.8 Withdrawal Deadline and Withdrawal Procedures

The withdrawal deadline:

For all Australian Ranking tournaments: 11:59pm (local time), seven (7) days prior to the commencement of the qualifying event.

Late withdrawal penalties:

a) Before the withdrawal deadline:

- No penalty, no medical certificate required.

b) After the withdrawal deadline

i. Before first match:

Any withdrawal from an athlete accepted into the Main Draw or Qualifying that occurs after the Withdrawal Deadline shall be considered a late withdrawal. An athlete's first three (3) late withdrawal offences within a calendar year are excused, provided the withdrawal is received by the Tournament Referee or Tournament Director (email, fax or post – but not SMS) prior to the start of the relevant first match for that athlete at the tournament.

A withdrawal is deemed excused when a tournament appointed doctor/Sports Physiotherapist assesses the athlete on-site and verifies that player is unfit to compete the event.

- ##### ii. An athlete will be issued one disciplinary point under the Tennis Australia Code of Behaviour policy when a player has incurred their fourth late withdrawal in a calendar year.

Players are now allowed three free late withdrawals before penalties are imposed.

Timeline	Excused	Violation
1. Between withdrawal deadline and first match:	*First three (3) late withdrawal offences within a calendar year are excused	*A player will be issued one disciplinary point under the Tennis Australia Code of Behaviour policy when he/she has incurred the fourth late withdrawal in a calendar year. And another disciplinary point for every subsequent late withdrawal.
2. Players on-site withdrawal before the first match:	* Events with Tournament Appointed on site Dr/Physio/Sports Physiotherapist: When the tournament appointed doctor/Sports Physiotherapist verifies that player is unfit to compete in the tournament or unfit to play the first event and cleared to play in other events at the same tournament. * Events without Tournament Appointed on site Dr/Physio/Sports Physiotherapist:	* Events with Tournament Appointed on site Dr/Physio/Sports Physiotherapist: Withdrawal without on-site verification of unfit to play from appointed doctor/Sports Physiotherapist. * Events without Tournament Appointed on site Dr/Physio/Sports Physiotherapist:

	<p>If the player is on site and obviously injured / ill and the Referee is satisfied, then the player will not be subject to late withdrawal penalties.</p> <p>* Note in relation to withdrawals for bereavement:</p> <p>Player is committed to complete a match/tournament, yet is unable to do so for reasons of bereavement and the Referee is satisfied of the validity of it then the player will not be subject to late withdrawal penalties.</p>	<p>Withdrawal without the Referee's approval.</p> <p>A withdrawal where the Referee is not satisfied of a valid reason, or cannot confirm that an injury or illness exists to the degree that a player cannot meet their commitment at that event.</p>
--	---	--

Timeline	Excused	Violation
<p>3. On-site withdrawal/retirement once the first match commenced:</p>	<p>* Player is committed to complete a match and/or a tournament, yet is unable to start the match or to complete it after commencement of the match, for reasons of illness, injury or bereavement and the Referee has verified the reason and is satisfied of the validity of it, then the player will not be penalised according to the Code of Behaviour, failure to complete a match/a tournament.</p>	<p>A player is not completing a match and/or a tournament without having a legitimate reason that satisfies the Referee:</p> <p>The player will be penalised according to the Code of Behaviour, failure to complete a match/a tournament.</p>

NOTES:

1. **Withdrawal vs. No-Show:** A Withdrawal is received by the Tournament Referee or Tournament Director (email or fax – but not SMS) before the start of the relevant first match for that athlete at the tournament. A No-show applies when no valid withdrawal is received before the match is called to the court.
 2. **Discretion of the Referee clause:** The discretion of the Referee may or may not be an onsite decision. The Referee may need to consult with Member Association/Tennis Australia about the circumstances. Generally, once the first match begins the player is expected to complete the match and is committed to complete the tournament. If there is any doubt, the referee should not excuse a player and submit a failure to complete a match/a tournament.
- It is the athlete's responsibility to be aware of the correct withdrawal procedures
 - Athletes are advised to keep copies of all withdrawal documentation in case of appeal.
 - Withdrawal notification must be in writing (by e-mail, fax or post – not via SMS by social media channels) and submitted to the Tournament Director or Referee prior to the match being called.

CASE: It is before the commencement of the tournament. If a player withdraws with an injury out of one event, but elects to stay in another, does the player use one of their free late withdrawals?

DECISION: Yes, the player uses one of their free late withdrawals.

Further question to this case:

CASE: Are referees required to ask for a medical certificate to check it is safe for the player to play for the event that the players elected to stay in?

DECISION: Because it is pre-tournament, there is no medical certificate required that states that they are fit to play. In this circumstance, it is a player's responsibility to judge if they are fit to play the event they chose to stay in.

CASE: During a tournament, can an athlete medically withdraw or retire from a match and play again that day?

DECISION:

- If there is an on-site tournament-appointed Doctor/Sports Physiotherapist, an athlete who withdraws or retires from one event can play in other events on the same, or subsequent days, with medical clearance and approval from Referee.
- If there is no onsite tournament- appointed Doctor/Sports Physiotherapist, an athlete who withdraws or retires from one event can play in other events on the next or subsequent days with medical clearance and with approval of the Referee, but must be withdrawn from all other matches schedule for, and called on the same day.

NOTE: If due to weather or other circumstances, any of that Athlete's matches are postponed until the next day, the Athlete is allowed to play in those events upon receiving clearance. This principle can be applied either on the first day of a tournament or subsequent days.

2.9 Retirements / On-site Medical Withdrawal Procedures during tournament

CASE: Are athletes who fail to complete a match penalised?

DECISION: Yes. If an athlete does not complete a match without having a legitimate reason for doing so, he/she will be subject to the Code of Conduct for "Failing to complete a match".

However, if an athlete is on site and is obviously ill or injured prior to or during a match, a code violation for "Failing to complete a match" may not be issued if the referee is satisfied of the existence of an injury or illness.

2.10 No Show Procedures

- a) Any athlete not ready to play within fifteen (15) minutes after his/her match is called shall be defaulted unless the Referee in their sole discretion, after consideration of all relevant circumstances, elects not to declare a default.

An athlete who does not appear for a scheduled match will be defaulted from that match. This is recorded as 'no show'.

NOTE: For doubles it is essential to accurately record the actual athlete that does not appear, as the innocent partner will not receive demerit points. Also it is necessary to complete this within the code violation function within Tournament Planner.

- b) An athlete who is defaulted under the "no show" provisions of the code of behaviour may be permitted to play in subsequent events at the discretion of the Referee. Situations where this may be applicable include (but are not limited to):
- Family Grievances;
 - Entry and Performance at a Pro Tour;
 - Late arrival due to transport difficulties;
 - Incorrect reading of the time schedule;
 - Attending the wrong venue.

However, the athlete must make contact with the Tournament Director or Referee within one (1) hour of the scheduled match time on the day of the "no-show" in order to be permitted to play other events. The athlete who makes contact within one (1) hour of the no show will be permitted to play both consolation and singles/doubles in the tournament. All other athletes who committed no show offences must be taken out of all singles and doubles events, including consolation. In addition, no show offences in qualifying consolation or doubles events will result in an athlete being ineligible to sign-in as a lucky loser for the main draw singles event if a qualifying event was held.

- c) It should be noted that for the purposes of Code of Behaviour processes the production of a Medical Certificate either during or post tournament is unacceptable in the case of a "No Show."

No Show Code Violations are not appealable under the TA Code of Behaviour.

2.11 *Withdrawal from Australian Pro Tour or Australian ITF Junior Event*

If an athlete withdraws or retires due to a medical condition at an Australian Pro Tour or Australian ITF Junior event, they will be ineligible to compete at an AMT or JT within that tournament week.

3. *Scheduling*

3.1 *All events*

Tournaments must make every effort to be time efficient with regards to scheduling, thereby limiting the amount of waiting time that athletes/families incur at each event. This includes –

- Accurate scheduling;
- Appropriate match formats for the number of entries received;
- Communication of scheduling and of any scheduling changes;
- Sensible and timely announcements in the event of rain or heat delays;
- Updating of match schedules and draws as frequently as possible and if applicable a text messaging service;
- Timely advice to athletes with regard to withdrawals, no-shows etc.

Maximum number of matches scheduled in a day

Athletes can be scheduled for a maximum of 6 tie-breaks sets of singles and 4 sets of doubles in one day. However, Athletes can be scheduled for a maximum of 9 tie-break sets of singles, if not competing in doubles on that day.

Tournaments however should make every effort to limit the number of singles sets to 6 tie-break sets in a day where still possible to get the tournament complete.

Note #1: Match tie-breaks are not included in the sets tally

Note #2: This playing condition is predicated on athletes being entered into only one singles and one doubles event, but includes Main Draw and Consolation singles

Note #3: This is not applicable when the Extreme Heat Policy is in force in which case Athletes should be scheduled for fewer matches (which may include matches being removed from a previously advertised daily schedule) or for matches with shortened formats. Refer to Appendix 4, Tennis Australia Extreme Weather Policy.

Note #4: Referees should ensure athletes are receiving adequate rest between matches particularly when more extreme weather conditions prevail and where 9 possible sets are being required to be played.

Note #5: Athletes who enter in more than two events may be required to play more sets in a day

Note #6: In all instances athletes may elect (in consultation with the Referee) to play more than the maximum number of sets aforementioned on any particular day but should never be forced to do so by the event or Referee

Note#7: Tournaments should make every effort to evenly spread an athlete's match load over the entire duration of an event.

Singles and Doubles scheduled on the same day

If playing singles and doubles on the same day, it is preferred that singles matches be played prior to doubles matches. Doubles matches can be scheduled prior to singles matches if it is in the best interests of effective scheduling, in particular where it is more appropriate to play main draw doubles prior to consolation singles. It may also be more appropriate where tournaments are trying to encourage more players to compete in doubles events.

Daily release of the Schedule

Every evening, the schedule for the following day's play must be published on the Internet via <http://tournaments.tennis.com.au> and displayed at the venues being used for the tournament. Tournament Directors must ensure that the updated draws and times are published on the Internet before leaving the venue.

3.2 Junior Tournament Time Restrictions

For all levels of JTs, no matches may be scheduled before 7:30am and no match must commence after 7:30pm, unless exceptional circumstances including weather (extreme or otherwise) exist in the opinion of the Tournament Referee.

Junior Tournaments that start on a school day will be permitted to start from 5pm, unless approved by Tennis Australia in exceptional circumstances. They must still abide by the above 7:30pm last match starting time regulation.

3.3 Rest Breaks

The following are the suggested minimum rest periods between matches –

- Matches lasting less than 2 hours = 30 minutes rest
- Matches lasting between 2 to 3 hours = 1 hour rest
- Matches lasting more than 3 hours = 1½ hour rest

Where the Extreme Heat Policy has been invoked, the suggested minimum rest periods should be extended within reason in conjunction with using shortened match formats.

Under no circumstances are athletes to be forced to play inside their allocated rest period, unless they voluntarily choose to do so. The Referee must provide a minimum of 12 hours rest between matches played on consecutive days except in exceptional circumstances where a minimum of 10 hours can be applicable.

3.4 Warm-ups

Immediately prior to a match, the Athletes are entitled to a warm-up period not exceeding five (5) minutes.

3.5 Suspension of Play

The Referee may suspend a match temporarily due to failing light or conditions of the court, weather or other safety issues. The Referee shall be the sole authority as to when play shall be resumed, which may be the next day. Until a match is postponed by the Referee, the athletes and officials must remain ready to resume the match.

Upon suspension of a match, the tournament desk shall record the time, point, game and set score, and the name of the server, the sides on which each athlete was situated and shall collect the balls in use for the match.

If suspension is due to darkness it should occur after an even number of games have been played in the set in progress or at the end of a set.

In the case of a suspended or postponed match, the period of warm-up shall be as follows:

- | | | |
|--|---|----------------------|
| • 0 -15 minutes delay | = | no warm-up |
| • More than 15 minutes, but less than 30 minutes | = | 3 minutes of warm-up |
| • 30 or more minutes of delay | = | 5 minutes of warm-up |

3.6 Tournament Extension

There is no provision in the regulations for the extension of tournament dates beyond those published on the entry form and fact sheet, with the exception of Platinum JTs.

4. Toilet Breaks / Change of Attire

An athlete is allowed to request permission to leave the court for a reasonable time for a toilet break / change of attire break (women's/girl's matches). Toilet breaks should be taken on a set break and can be used for no other purpose. Change of attire breaks (women's/girls) must be taken on a set break.

4.1 Number and Nature of Breaks Allowed

In men's/boy's singles matches, an athlete is entitled to one (1) break during a best of three (3) set match.

In women's/girl's singles matches, an athlete is entitled to two (2) breaks during a best of three (3) set match.

In doubles matches, each team is entitled to a total of two (2) breaks. If partners leave the court together, it counts as one (1) of the team's authorized breaks.

Any time an athlete leaves the court for a toilet or change of attire break, it is considered one of the authorized breaks regardless of whether or not their opponent has left the court.

4.2 Timing of Breaks

An athlete may not take a toilet break/change of attire break and a Medical Time-Out consecutively, unless approved by the Referee. An athlete may change her attire during a toilet break.

Any toilet break taken after a warm-up has started is considered one of the authorized breaks. Additional toilet breaks will be authorized but will be penalised in accordance with the Point Penalty Schedule if the athlete is not ready to play within the allowed time.

4.3 Denial of a request

The Referee shall have the authority to deny an athlete permission to leave the court during a match for a toilet and/or change of attire break if it is interpreted by the Referee as gamesmanship and/or flagrant abuse of the rules.

5. Medical Conditions / Treatment

The below procedures are only relevant to AMT/JTs that have appointed an on-site Doctor / PHCP.

5.1 Priority of Care / Availability of Sports Physiotherapist or Doctor

The priority of care for a Sports Physiotherapist at a tournament is as follows:

- a) Court Calls;
- b) Athletes preparing for main draw matches then consolation matches (singles athletes have priority over doubles athletes);
- c) Athletes still in the tournament and preparing for practice;
- d) Athletes still in the tournament, but who are not playing or practicing that day;
- e) Athletes eliminated from the tournament.

If a Sports Physiotherapist is on-site during a tournament, they will only be present one (1) hour before matches begin and until a maximum of one (1) hour after the completion of matches.

5.2 Medical Condition

A medical condition is a medical illness or a musculoskeletal injury that warrants medical evaluation and/or medical treatment by the Sports Physiotherapist during the warm-up or the match.

5.3 Treatable Medical Conditions

- a) **Acute medical condition:** the sudden development of a medical illness or musculoskeletal injury during the warm-up or the match that requires immediate medical attention.
- b) **Non-acute medical condition:** a medical illness or musculoskeletal injury that develops or is aggravated during the warm-up or the match and requires medical attention at the changeover or set break.

5.4 Non-Treatable Medical Conditions

- a) Any medical condition that cannot be treated appropriately, or that will not be improved by available medical treatment within the time allowed.
- b) Any medical condition (inclusive of symptoms) that has not developed or has not been aggravated during the warm-up or the match.
- c) General athlete fatigue.
- d) Any medical condition requiring injections, intravenous infusions or oxygen, except for diabetes, for which prior medical certification has been obtained, and for which subcutaneous injections of insulin may be administered.

5.5 Medical Evaluation

During the warm-up or the match, an athlete may request through the Referee/Chair Umpire/Court Supervisor for the Doctor/Sports physiotherapist to evaluate him/her during the next change over or set break. Only in the case that an athlete develops an acute medical condition that necessitates an immediate stop in play may the athlete request through the Referee/Chair Umpire/Court Supervisor for the Doctor/Sports Physiotherapist to evaluate him/her immediately.

The purpose of the medical evaluation is to determine if the athlete has developed a treatable medical condition and, if so, to determine when medical treatment is warranted. Such evaluation should be performed within a reasonable length of time, balancing athlete safety on the one hand, and continuous play on the other hand.

At the discretion of the Doctor/ Sports Physiotherapist, such evaluation may be performed in conjunction with the Tournament Doctor, and may be performed off-court.

If the Doctor/ Sports Physiotherapist determine that the athlete has a non-treatable medical condition, then the athlete will be advised that no medical treatment will be allowed.

5.6 Medical Time-Out

- a) A Medical Time-Out is allowed by the Tournament Referee / Chair Umpire/Court Supervisor when the Doctor/Sports Physiotherapist has evaluated the athlete and has determined that additional time for medical treatment is required. The Medical Time-Out takes place during a changeover or set break, unless the Doctor/Sports Physiotherapist determines that the athlete has developed an acute medical condition that requires immediate medical treatment.
- b) The Medical Time-Out begins when the Doctor/Sports Physiotherapist is ready to start treatment. At the discretion of the Doctor/Sports Physiotherapist, treatment during a Medical Time-Out may take place off-court.
- c) The Medical Time-Out is limited to three (3) minutes of treatment. However, this can be extended at the Tournament Referee's discretion.
- d) An athlete is allowed one (1) Medical Time-Out for each distinct treatable medical condition. All clinical manifestations of heat illness shall be considered as one (1) treatable medical condition. All treatable musculoskeletal injuries that manifest as part of a kinetic chain continuum shall be considered as one (1) treatable medical condition.

NOTE: Muscle Cramping: An athlete may receive treatment for muscle cramping only during the time allotted for change of ends and/or set breaks. Athletes may not receive a Medical Time-Out for muscle cramping.

In cases where there is doubt about whether the athlete suffers from an acute medical condition, non –acute medical condition inclusive of muscle cramping, or non-treatable medical condition, the decision of the Doctor/Sports Physiotherapist, if appropriate, is final. If the Doctor/Sports Physiotherapist trainer believes that the athlete has heat illness, and if muscle cramping is one of the manifestation of heat illness, then the muscle cramping may be treated as part of the recommended treatment by the Doctor/Sports Physiotherapist for the heat illness condition.

NOTE:

- An athlete who has stopped play by claiming an acute medical condition, but is determined by the Doctor/Sports Physiotherapist to have muscle cramping, shall be ordered by the Chair Umpires to resume play immediately.

- If the athlete cannot continue playing due to severe muscle cramping, as determined by the Doctor/Sports Physiotherapist he/she may forfeit the points(s)/game(s) needed to get to a change of end or set break in order to receive immediate evaluation, and treatment if time allows. There may be a total of two (2) additional changes of ends treatments for muscle cramping in a match, not necessarily consecutive.
- If it is determined by the Chair Umpire or Referee that gamesmanship was involved, then Code Violation for Unsportsmanlike Conduct could be issued.

A total of two (2) consecutive Medical Time-Outs may be allowed by the Tournament Referee or Chair Umpire for the special circumstance in which the Doctor/Sports Physiotherapist determine that the athlete has developed at least two (2) distinct acute and treatable medical conditions. This may include:

- a medical illness in conjunction with a musculoskeletal injury;
- two or more acute and distinct musculoskeletal injuries.

In such cases, the Doctor/Sports Physiotherapist will perform a medical evaluation for the two or more treatable medical conditions during a single evaluation, and may then determine that two consecutive Medical Time-Outs are required.

5.7 *Medical Treatment*

An athlete may receive on-court medical treatment and/or supplies from the Doctor/Sports Physiotherapist during any changeover or set break. As a guideline, such medical treatment should be limited to two (2) changeovers/set breaks for each treatable medical condition, before or after a Medical Time-Out, and need not be consecutive. Athletes may not receive medical treatment for non-treatable medical conditions.

5.8 *Penalty*

After completion of a Medical Time-Out or medical treatment, any delay in resumption of play shall be penalized by Code Violations for Delay of Game. Any athlete abuse of this Medical Rule will be subject to penalty in accordance with the Unsportsmanlike Conduct section of the Code of Conduct.

5.9 *Bleeding*

If an athlete is bleeding, the Referee/Chair Umpire must stop play as soon as possible, and the Doctor/Sports Physiotherapist should be called to the court for evaluation and treatment. The Doctor/Sports Physiotherapist, will evaluate the source of the bleeding, and will request a Medical Time-Out for treatment if necessary.

If requested by the Doctor/Sports Physiotherapist, the Tournament Referee or Chair Umpire may allow up to a total of five (5) minutes to ensure control of the bleeding. If blood has spilled onto the court or its immediate vicinity, play should not resume until the blood spill has been cleaned appropriately.

5.10 *Vomiting*

If an athlete is vomiting, the Referee/Chair Umpire must stop play if vomit has spilled onto the court, or if the athlete requests medical evaluation. If the athlete requests medical evaluation, then the Doctor/Sports Physiotherapist should determine if the athlete has a treatable medical condition, and if so, whether the medical condition is acute or non-acute. If vomit has spilled onto the court, play must not resume until the vomit spill has been cleaned appropriately.

5.11 *Physical Incapacity*

During a match, if there is an emergency medical condition and the athlete involved is unable to make a request for a Doctor/Sports Physiotherapist, the Referee/Chair Umpire/Court Supervisor shall immediately call for the Doctor/Sports Physiotherapist to assist the athlete. Either before or during a match, if an athlete is considered unable physically to compete, the Doctor/Sports Physiotherapist should inform the Tournament Referee and recommend that the athlete is ruled unable to compete in the match to be played, or retired from the match in progress. The Tournament Referee shall use great discretion before taking this action and should base the decision on the best interests of the tournament, as well as taking all medical advice and any other information into consideration. The athlete may subsequently compete in another event at the same tournament on subsequent days if the Doctor/Sports Physiotherapist determines that the athlete's condition has improved to the extent that the athlete may safely physically perform at an appropriate level of play.

5.12 Medical Treatment procedure for AMT/JT tournament without appointed Doctor/PHCP

In a situation where there is no tournament appointed Doctor/Sports Physiotherapist, players are permitted one medical time out (3 minutes) for each new injury/illness, including cramping conditions at the discretion of the relevant official. However, one medical time out permitted per match for any and all cramping conditions.

Medical time out can be extended at the discretion of the Referee up to a maximum of ten (10) minutes. At these tournaments, players may receive assistance from coaches/parents under the supervision of a relevant official.

Summary of Breaks in Play

Break	When available	Maximum time permitted	Maximum number permitted	Permission required
During Play	Between Points	20 seconds	N/A	No
	Between games when a change of end is required (except after the first game of each set and during a tie-break)	90 seconds	N/A	
	Between Sets	Two minutes	N/A	
Toilet Break	Should be taken between sets	Reasonable amount of time	A total of one (boys) and two (girls) toilet and attire breaks per Athlete (and in doubles two per pair). Permission may be given for additional breaks but only to be taken during the usual breaks during play (for example, in the two minutes between sets)	Yes
Change of attire break (female Athletes only)	Males can be permitted to leave the court to change attire but only when the "equipment out of adjustment" rule is being enforced			
Medical break (for evaluation, treatment or supplies, but not for Non-Treatable Conditions)	In the 90-second or two minute breaks in play between sets or between games when a change of end is required	90 seconds / two minutes	N/A, but permission will not generally be granted for evaluation, treatment or supplies on more than two breaks for each condition	Yes
Medical timeout (not for Non-Treatable Conditions or muscle cramping)	Acute condition: at any time Non-acute condition: in the 90-second or two-minute breaks in play between sets or between games when a change of end is required	Three minutes (starting after evaluation completed)	One per condition	Yes
Blood Rule Break	At any time	Up to five minutes	N/A	Yes

Section 4 - Appendixes

1. Australian Ranking Rules and Regulations

The Australian Ranking is the mathematical method of ranking Australian tennis athletes on a calendar-year basis. The Australian Ranking is the objective merit-based method used for determining qualification for entry and seeding in all tournaments for singles and doubles.

1.1 Eligibility

- a) All Australian citizens and permanent residents who have participated in an Australian Ranking tournament and satisfied the point accumulation requirements are eligible for an Australian Ranking. This includes international athletes, providing they have registered for a My Tennis number.
- b) Any permanent resident who is listed on the ATP, WTA, ITF Juniors or Tennis Europe website under a different nationality to Australian will not have their ATP, WTA, ITF Juniors or Tennis Europe ranking points accredited to their Australian Ranking. The points will only be officially recognised within their Australian Ranking when their nationality on the ATP, WTA, ITF Junior or Tennis Europe website is listed as Australian ("AUS") or have submitted and signed to Tennis Australia the relevant immigration documents.

1.2 Ranking Calculation Method

An athlete's Australian Ranking is calculated using the best eight (8) singles results plus 25% of their best six (6) doubles results. The mix of an athlete's best results is modified dependent on their age (see 1.7 below).

The official Australian Ranking system works on a 12 calendar month rollover system – calculated by athletes' total points in the immediate prior 12 calendar months. Once this 12 month period expires, acquired points will cease to contribute to an athlete's AR.

1.3 Processing of the Australian Rankings

The Australian Rankings are processed on a fortnightly basis, on a 12-calendar month rollover system (see details above in 1.2 – Ranking Calculation Method). Australian Ranking (AR) Tournaments must be scheduled to be completed on the Monday preceding the Friday release of the Australian Rankings.

The updated ranking lists will be published on the Tennis Australia Rankings website (<http://rankings.tennis.com.au>) fortnightly on the odd weeks of the year (e.g 01, 03, 05 etc.).

CASE: An Australian Ranking (AR) tournament is held from 25 January until 28 January. When will the points from these events be awarded to Athletes?

DECISION: As the tournament finishes on the Monday 28 January preceding the Friday release (01 February), points will be awarded to Athletes in the 'Week 05' release of the Australian Rankings.

1.4 Athletes Responsibility

It is an athlete's responsibility to check that their ranking is accurate. Any perceived anomalies, incorrect spellings, change of registered address, email, date of birth or queries regarding the Australian Rankings should be communicated via email to Tennis Australia via tournaments@tennis.com.au.

All amendments will be made with the next fortnightly release of the Australian Rankings. However, Tennis Australia reserves the right to release revised rankings at any time if it determines that the amendments are in the greater best interest of the athletes and the Australian Rankings.

1.5 AR Sanctioned Tournaments

The Australian Ranking system positions Australian tournament athletes from pro tour competitors through to 12/u state level performers according to results at Australian Ranking Tournaments, and the conversion of international tours and tournaments (see 1.6 below)

a) Australian Money Tournaments (AMTs)

The Australian Money Tournament circuit consists of a number of tournaments offering a minimum of \$2,000 in total prize money. All tournaments are assigned ranking levels according to tournament strength.

AMT Calendar: <http://www.tennis.com.au/tournaments/pro-tournaments/australian-money-tournaments>

b) Junior Tournaments (JT)

Junior Tournaments consists of an array of state and national junior (12/u, 14/u, 16/u and 18/u) tournaments, as well as State Junior Championships and National Junior Championships. All tournaments are assigned ranking levels according to tournament strength.

Junior Tournament Calendar: <http://www.tennis.com.au/tournaments/juniors/junior-tour>

1.6 Conversion of International Ranking Points

The following tours and tournaments are recognised by the Australian Ranking system and contribute to an athlete's ranking points as follows –

a) ATP/WTA Events & ITF Pro Circuits (includes Australian Pro Tour)

An athlete's total singles ranking points on the ATP/WTA tour will be multiplied by five-hundred (500) and stand as one (1) Australian Ranking singles result.

An athlete's total doubles ranking points on the ATP/WTA tour will be multiplied by fifteen (15) and stand as one (1) Australian Ranking doubles result.

ATP Calendar: <http://www.atpworldtour.com>

WTA Calendar: <http://www.wtatennis.com>

ITF Pro Circuits Calendars: <http://www.itftennis.com/womens>

<http://www.itftennis.com/mens>

Australian Pro Tour Calendars: <http://www.tennis.com.au/tournaments/pro-tour/calendar>

b) ITF Junior Circuit (18s)

The ITF Junior Circuit is comprised of the best international junior tournaments staged by its Member Nations worldwide.

In 2019, only Boys and Girls born between 1 January 2001 and 31 December 2006 may participate. However, athletes may not participate unless they have reached their 13th birthday before the start of the Main Draw.

An athlete's total ranking points (both singles & doubles) on the ITF Junior Circuit will be multiplied by three (3) and stand as one (1) Australian Ranking singles result.

ITF Junior Circuit Calendar: <http://www.itftennis.com/juniors>

c) Tennis Europe Junior Tour

An athlete's performance on the Tennis Europe Junior Tour will be multiplied by one (1) and stand as one (1) Australian Ranking singles result at the 14/u or 16/u level – depending on the athlete's age

Tennis Europe Calendar: <http://www.tenniseurope.org>

1.7 Best eight (8) singles & best six (6) doubles results - regulations

The following information serves as the rules for the allocation of Australian Ranking points –

An athlete's combined (singles and doubles) Australian Ranking will be made up of their best eight (8) singles plus 25% of their best six (6) doubles results, with the following mix of results dependent on their age:

- Athletes will only receive AMT points from the end of the month once they have turned 15 years of age.
- Athletes will have no restrictions on results as of the end of the month once they have turned 17 years of age.

NOTE: Only results achieved in the past 12 months of a ranking release contribute to an athlete's Australian Ranking

Results will be grouped either junior or post junior (open) according to the following table:

JUNIOR RESULTS	POST JUNIOR (OPEN) RESULTS
Junior Tournaments (JT)	Australian Money Tournaments (AMT)
Tennis Europe Junior Tour Rankings	Australian Pro Tour
Australian ITF Junior Tour	ATP / WTA Tour Rankings
ITF Junior Circuit Rankings	

This mix is as follows –

a) Athletes that are 12 years of age or younger (i.e. born within the year 2007 or later)

- Singles: Best eight (8) results will only be calculated from tournaments contested in either 12/u or 14/u tournaments;
- Doubles: 25% of best six (6) results will only be calculated from tournaments contested in either 12/u or 14/u tournaments;

b) Athletes that have turned 13 years of age and are still 14 years of age (i.e. born in year 2004 until they turn 15 years of age), 2005 or 2006).

- Singles:** Best eight (8) results can be calculated from tournaments contested in either 12/u or 14/u tournaments. If applicable, athletes can have results from a maximum of three (3) 16/u and one (1) 18/u events count towards their ranking.
- Doubles:** 25% of best six (6) results can be calculated from tournaments contested in either 12/u or 14/u tournaments. If applicable, athletes can have results from a maximum of two (2) 16/u and one (1) 18/u events count towards their ranking.

Please note a major change from 2018 - Player's will now only receive points from Australian Money Tournaments (AMTs) from the end of the month once they have turned 15 years of age. For example, if a player turns 15 years-old on September 1, they will receive AMT points when the End of September rankings are released on October 8.

c) Athletes that have turned 15 years of age or still 16 years of age (i.e. born during years 2002, 2003 and within 2004)

- Singles:** Best eight (8) results can only include a maximum of four (4) post junior tournaments. (Note that the mix here could – for example – include eight junior results, however can only have a maximum of four post junior results);
- Doubles:** 25% of best six (6) results can only include a maximum of three (3) post junior tournaments. (Note that the mix here could – for example – include six junior results, however can only have a maximum of three post junior results);

d) Athletes that have turned 17 years of age or older (i.e. born within the year 2002 or earlier)

- Singles:** No restriction on formation of best eight (8) results;
- Doubles:** No restriction on formation of 25% of best six (6) results;

1.8 **Points Allocation**

a) Allocation of Singles points

Australian Ranking singles points will be awarded provided the athlete has won at least one match in either the main draw or qualifying rounds (refer to (b) below).

CASE: Will an athlete that is directly accepted into the main draw, but then fails to win a match be allocated Australian Ranking points?

DECISION: No, any athletes that are accepted directly into the main draw must win at least one match in the main draw to be eligible for Australian Ranking points.

b) Allocation of points for Qualifiers into the Main Draw

Athletes qualifying for the main draw through the qualifying competition will receive qualifying points in addition to any points earned in the main draw.

Please note: Athletes eligible for points for Qualifying and a result in the Main Draw Consolation event will only have the higher number of points awarded – not both

CASE: How many points would an athlete receive if they were successful in qualifying at an AMT Platinum singles event and then subsequently lost in the semi-finals of the main draw?

DECISION: An athlete receives 75 points if they won all their matches and qualified for the main draw of an AMT Platinum singles event. There is also 240 points for losing in

the semi-finals of the main draw, so a qualifier that loses in the semi-finals receives a total of 315 points.

c) Allocation of Doubles points

- i. Australian Ranking points will be awarded from the quarter final (QF) round onwards provided a minimum of 4 teams actively competing in the draw. A team must play a match in that event and must win at least one round to be eligible for points.
- ii. No Australian Ranking points will be awarded for feed-in/consolation doubles events.
- iii. All doubles draws must be played using a "single-elimination" format for Australian Ranking points to be awarded. If a round-robin is required due to low entry numbers, then AR points will only be awarded to Winners and Finalists.

d) Defaults / No-Shows / Walkovers / Byes

- i. Advancement by virtue of a retirement following the commencement of a match is the equivalent to winning a round. Advancement through a bye/withdrawal/walkover is not the equivalent to winning a round.
- ii. No points will be awarded to an athlete who forfeits a match unless the forfeit is due to illness or injury as verified by the Referee.
- iii. No AR Points will be awarded to an athlete or team who withdraws or is a 'no show' without playing their first match.
- iv. Any athlete who is defaulted shall lose all AR points earned for that event at the tournament, unless:
 - The athlete was defaulted for a violation of the Commencement of Play or Dress and Equipment sections of the Code of Behaviour
 - The athlete retired as a result of a medical condition
 - A member of a doubles team did not cause any of the misconduct Code Violations that resulted in the team being defaulted.

e) Abandoned Matches / Abandoned or Unplayed Finals

- i. If a tournament is abandoned due to inclement weather (or other extraordinary circumstances) before the final, points will be awarded for all matches completed.

CASE: If only 1 of the 4 semi-final positions have been determined when the tournament is abandoned, the athlete who reached the SF round will be awarded SF points, and the remaining Athletes will be awarded QF points.
- ii. If a main draw singles, doubles or singles consolation final is abandoned due to inclement weather (or other extraordinary circumstances), the total amount of points on offer (Winner and Finalist) will be added together and then divided equally amongst the two athletes / teams.
- iii. If a main draw singles, doubles or singles consolation final is abandoned due to both players/teams withdrawing prior to the start of the match, each player/team shall receive finalists points.
- iv. Tennis Australia has the final authority with regards to the awarding of points under points (i) and (ii) in this section.
- v. If a main draw singles play-off match is abandoned due to inclement weather (or other extraordinary circumstances), then players will be awarded the points for the round reached (e.g 3rd and 4th play-off awarded SF points, and 5th – 8th play-off awarded QF points)

f) Awarding points based on the best result at a tournament

- i. Athletes eligible for points in both the Main Draw and Consolation event will have the higher number of points awarded – not both.
- ii. Athletes eligible for points in the Qualifying event and the Main Draw Consolation event will have the higher number of points awarded – not both.
- iii. At the discretion of the tournament committee, an athlete may enter and play in the 18/u event plus the AMT event.

In the instance that a tournament awards Australian Ranking points in Junior and AMT events within the same tournament, athletes eligible for points in both events will have the higher number of points awarded – not both.

- iv. With the approval of the relevant Member Association and/or Tennis Australia in conjunction with the tournament committee, an athlete may enter and play in two (2) Junior Tournament age groups at the same tournament. (Please see 9.2 Event Structure at Tournaments for guidance on playing more than one JT age ground)

In this instance, athletes eligible for points in more than one age group will have the higher number of points awarded – not both.

g) Small Draw Points Reductions

- i. Main Draw Singles events with 4-11 competing athletes will receive 50% of the publicised AR points.
- ii. Main Draw Doubles events with 4-7 competing pairs will receive 50% of the publicised AR points.
- iii. Main Draw Singles and Doubles events with less than 4 competing athletes will receive no AR points.

h) Consolation Events

- i. Main draw singles consolation points will only be awarded if 16 or more Athletes compete in the main draw.
- ii. For main draw singles consolation events, points will be awarded for winners and finalists
- iii. No points will be awarded for tournaments that offer a singles qualifying consolation or doubles consolation event.

i) ITF Junior points allocation

In line with ITF rules, on the 1st January each year (to be released at the End of January rankings) all athletes who are entering their 19th birth year will lose all ITF Junior Ranking points that have been allocated towards their Australian Ranking, regardless of whether they have been earned within the previous 12 months.

1.9 **Submission of Australian Rankings to International Tennis Federation for ITF Pro Circuit and ITF Junior Circuit Acceptance Lists**

a) **Pro Tour Events**

The acceptance lists for each ITF Pro Circuit event are released onto the ITF Pro Circuit website immediately after the entry deadline has passed. The acceptance list places Athletes in order based on the ATP/WTA World rankings and national rankings thereafter. However, the ITF office only accepts the national rankings of the Top 500 Australian Athletes. Athletes outside of this list are drawn into their position on the acceptance list in random order.

International Athletes with an Australian Ranking will only be on the Australian National Ranking list that is sent to the ITF office upon request. However, international athletes will not have their ATP/WTA or ITF Jnr points added to their Australian Ranking for this purpose.

Please be aware that this specific Australian Rankings list is only accepted by the ITF office **four (4) times per calendar year**. Because of this, we endeavour to send the latest Australian Rankings to the ITF office in time for each Australian Pro Circuit swing as it is not possible to do so on a monthly basis or on individual athlete request.

b) **ITF Junior Circuit**

The acceptance lists for each ITF Junior Circuit event are released onto the ITF Juniors website immediately after the entry deadline has passed. The acceptance list places Athletes in order based on the ITF Junior rankings and national rankings thereafter. However, the ITF office only accepts the national rankings of the Top 150 18/u Australian Athletes that do not hold an ITF Junior world ranking. Athletes outside of this list are drawn into their position on the acceptance list in random order.

Please be aware that this specific Australian Rankings list is only accepted by the ITF office **four (4) times per calendar year**. Because of this, we endeavour to send the latest Australian Rankings to the ITF office in time for each Australian ITF Junior Circuit swing as it is not possible to do so on a monthly basis or on individual athlete request.

International Athletes with an Australian Ranking will only be on the Australian National Ranking list that is sent to the ITF office upon request. However, international athletes will not have their ATP/WTA or ITF Jnr points added to their Australian Ranking for this purpose.

1.10 Australian Ranking Points Allocation Tables

Each AR tournament listed in the calendar on the following pages has been assigned an AR points level. These levels will correspond to the 2019 Australian Ranking points' tables shown below. You can view your ranking at any time by going to <http://rankings.tennis.com.au>

Please note significant changes from 2018 include:

- Singles Consolation AR points will remain for Winners and Finalists, while Semi-Finalist AR points have been removed
- Singles Qualifying AR points will remain for the Qualifier, where applicable, while Singles Qualifying Consolation AR points have been removed

Table 1.10 (a) – 12/u, 14/u & 16/u Bonus Singles Points Table for Victorian, NSW, Queensland State Championships and Bruce Cup Individual tournament

Total Points Awarded (inclusive of Bonus Points)	12/u	14/u	16/u
Winner	23	34	60
Finalist	16	24	36

1.10.1 – 12/u Australian Ranking Junior Tournaments

Table 1.10.1 (a) – 12/u Gold and Silver Series (Qualifying Singles)

Qualifying Singles	12/u Gold	12/u Silver
Qualifier	1.70	0.85
Qualifying Round 4*	1.35	0.70
Qualifying Round 3	1.10	0.55
Qualifying Round 2	0.25	0.15

* Only applicable if there are four rounds of qualifying

Table 1.10.1 (b) – 12/u Gold, Silver and Bronze Series (Main Draw Singles – Elimination Format)

Main Draw Singles (Elimination Draw)	12/u Gold	12/u Silver	12/u Bronze
Winner	16	12	<u>5</u>
Finalist	11	8	<u>3</u>
3 rd Place	9	6	<u>2</u>
4 th Place / Semi Finalist	6	4	<u>1</u>
5 th Place	5.50	n/a	<u>n/a</u>
6 th Place	5	n/a	<u>n/a</u>
7 th Place	4.50	n/a	<u>n/a</u>
8 th Place / Quarter Finalist*	4	2	<u>0.50</u>
Round of 16	2	1	<u>0.30</u>
Round of 32*	n/a	0.25	<u>0.05</u>
Main Draw Consolation Winner	3	1.5	<u>0.40</u>
Main Draw Consolation Finalist	2.25	1.10	<u>0.30</u>

* Only applicable for main draws with 33 and above Athletes

Table 1.10.1 (c) – 12/u Gold, Silver and Bronze Series (Main Draw Singles – Round-Robin Format)

Main Draw Singles (Round-Robin Draws)	12/u Gold	12/u Silver	12/u Bronze
Winner	16	12	<u>5</u>
Finalist	11	8	<u>3</u>
3 rd Place	9	6	<u>2</u>
4 th Place / Semi Finalist	6	4	<u>1</u>
5 th Place	5.50	n/a	<u>n/a</u>
6 th Place	5	n/a	<u>n/a</u>
7 th Place	4.50	n/a	<u>n/a</u>
8 th Place / Quarter Finalist*	4	2	<u>0.50</u>
2 nd Place in RR	3	1.50	<u>0.40</u>
3 rd Place in RR	2	1	<u>0.30</u>
4 th Place in RR	1.35	0.70	<u>0.20</u>

* Only applicable for 32-Athlete round-robin draws

Table 1.10.1 (d) – 12/u Gold, Silver and Bronze Series (Main Draw Doubles)

Main Draw Doubles	12/u Gold	12/u Silver	12/u Bronze
Main Draw Doubles Winners (each Athlete)	4	3	<u>1.25</u>
Main Draw Doubles Finalists (each Athlete)	2.75	2	<u>0.75</u>
Main Draw Doubles Semi-Finalists (each Athlete)	1.50	1	<u>0.25</u>
Main Draw Doubles Quarter-Finalists (each Athlete)	1	0.50	<u>0.13</u>

1.10.2 – 14/u Australian Ranking Junior Tournaments

Table 1.10.2 (a) – 14/u Gold and Silver Series (Qualifying Singles)

Qualifying Singles	14/u Gold	14/u Silver
Qualifier	3.50	2.55
Qualifying Round 4*	2.80	2.05
Qualifying Round 3	2.25	1.65
Qualifying Round 2	0.75	0.40

* Only applicable if there are four rounds of qualifying

Table 1.10.2 (b) – 14/u Gold, Silver and Bronze Series (Main Draw Singles – Elimination Format)

Main Draw Singles (Elimination Draw)	14/u Gold	14/u Silver	14/u Bronze
Winner	24	20	<u>12</u>
Finalist	17	14	<u>8</u>
3 rd Place	15	12	<u>6</u>
4 th Place / Semi Finalist	12	9	<u>4</u>
5 th Place	11	n/a	<u>n/a</u>
6 th Place	10	n/a	<u>n/a</u>
7 th Place	9	n/a	<u>n/a</u>
8 th Place / Quarter Finalist	8	6	<u>2</u>
Round of 16	4	3	<u>1</u>
Round of 32*	n/a	0.75	<u>0.25</u>
Main Draw Consolation Winner	6	4.50	<u>1.50</u>
Main Draw Consolation Finalist	4.50	3.40	<u>1.10</u>

* Only applicable for main draws with 33 and above Athletes

Table 1.10.2 (c) – 14/u Gold, Silver and Bronze Series (Main Draw Singles – Round-Robin Format)

Main Draw Singles (Round-Robin Draws)	14/u Gold	14/u Silver	14/u Bronze
Winner	24	20	<u>12</u>
Finalist	17	14	<u>8</u>
3 rd Place	15	12	<u>6</u>
4 th Place / Semi Finalist	12	9	<u>4</u>
5 th Place	11	n/a	<u>n/a</u>
6 th Place	10	n/a	<u>n/a</u>
7 th Place	9	n/a	<u>n/a</u>
8 th Place / Quarter Finalist*	8	6	<u>2</u>
2 nd Place in RR	6	4.50	<u>1.50</u>
3 rd Place in RR	4	3	<u>1</u>
4 th Place in RR	2.80	2	<u>0.70</u>

* Only applicable for 32-Athlete round-robin draws

Table 1.10.2 (d) – 14/u Gold, Silver and Bronze Series (Main Draw Doubles – Elimination Format)

Main Draw Doubles	14/u Gold	14/u Silver	14/u Bronze
Main Draw Doubles Winners (each Athlete)	6	5	<u>3</u>
Main Draw Doubles Finalists (each Athlete)	4.25	3.50	<u>2</u>
Main Draw Doubles Semi-Finalists (each Athlete)	3	2.25	<u>1</u>
Main Draw Doubles Quarter-Finalists (each Athlete)	2	1.50	<u>0.50</u>

1.10.3 – 16/u Australian Ranking Junior Tournaments

Table 1.10.3 (a) – 16/u Gold and Silver Series (Qualifying Singles)

Qualifying Singles	16/u Gold	16/u Silver
Qualifier	5	3.50
Qualifying Round 4*	4.50	2.80
Qualifying Round 3	4	2.25
Qualifying Round 2	1	0.55

* Only applicable if there are four rounds of qualifying

Table 1.10.3 (b) – 16/u Gold, Silver and Bronze Series (Main Draw Singles – Elimination Format)

Main Draw Singles (Elimination Draw)	16/u Gold	16/u Silver	16/u Bronze
Winner	<u>40</u>	24	<u>16</u>
Finalist	<u>26</u>	17	<u>11</u>
3 rd Place	18.5	15	<u>9</u>
4 th Place / Semi Finalist	16	12	<u>6</u>
5 th Place	14	n/a	<u>n/a</u>
6 th Place	12	n/a	<u>n/a</u>
7 th Place	11	n/a	<u>n/a</u>
8 th Place / Quarter Finalist	10	8	<u>4</u>
Round of 16	6	4	<u>2</u>
Round of 32*	n/a	1	<u>0.50</u>
Main Draw Consolation Winner	8	6	<u>3</u>
Main Draw Consolation Finalist	7	4.50	<u>2.25</u>

* Only applicable for main draws with 33 and above Athletes

Table 1.10.3 (c) – 16/u Gold, Silver and Bronze Series (Main Draw Singles – Round-Robin Format)

Main Draw Singles (Round-Robin Draws)	16/u Gold	16/u Silver	16/u Bronze
Winner	<u>40</u>	24	<u>16</u>
Finalist	<u>26</u>	17	<u>11</u>
3 rd Place	18.5	15	<u>9</u>
4 th Place / Semi Finalist	16	12	<u>6</u>
5 th Place	14	n/a	<u>n/a</u>
6 th Place	12	n/a	<u>n/a</u>
7 th Place	11	n/a	<u>n/a</u>
8 th Place / Quarter Finalist*	10	8	<u>4</u>
2 nd Place in RR	8	6	<u>3</u>
3 rd Place in RR	6	4	<u>2</u>
4 th Place in RR	4	2.80	<u>1.40</u>

* Only applicable for 32-Athlete round-robin draws

Table 1.10.3 (d) – 16/u Gold, Silver and Bronze Series (Main Draw Doubles)

Main Draw Doubles	16/u Gold	16/u Silver	16/u Bronze
Main Draw Doubles Winners (each Athlete)	<u>10</u>	6	<u>4</u>
Main Draw Doubles Finalists (each Athlete)	<u>6.50</u>	4.25	<u>2.75</u>
Main Draw Doubles Semi-Finalists (each Athlete)	4	3	<u>1.50</u>
Main Draw Doubles Quarter-Finalists (each Athlete)	2.50	2	<u>1</u>

1.10.4 – 18/u Australian Ranking Junior Tournaments

Table 1.10.4 (a) – 18/u Gold and Silver Series (Qualifying Singles)

Qualifying Singles	18/u Gold	18/u Silver
Qualifier	9	7
Qualifying Round 4*	7	5
Qualifying Round 3	6	4
Qualifying Round 2	1.50	1.10

* Only applicable if there are four rounds of qualifying

Table 1.10.4 (b) – 18/u Gold, Silver and Bronze Series (Main Draw Singles – Elimination Format)

Main Draw Singles (Elimination Draw)	18/u Gold	18/u Silver	18/u Bronze
Winner	70	50	30
Finalist	49	35	21
3 rd Place	42	29	19
4 th Place / Semi Finalist	35	22	16
Quarter Finalist	22	16	10
Round of 16*	12	9	6
Round of 32**	N/A	3	2
Main Draw Consolation Winner	17	12	8
Main Draw Consolation Finalist	12	9	6

* Only applicable for main draws with 17 and above Athletes

** Only applicable for main draws with 33 and above Athletes

Table 1.10.4 (c) – 18/u Gold, Silver and Bronze Series (Main Draw Singles – Round-Robin Format)

Main Draw Singles (Round-Robin Draws)	18/u Gold	18/u Silver	18/u Bronze
Winner	70	50	30
Finalist	49	35	21
3rd Place	42	29	19
4th Place / Semi Finalist	35	22	16
Quarter Finalist*	22	16	10
2nd Place in RR	17	12	8
3rd Place in RR	12	9	4
4th Place in RR	7	5	3

* Only applicable for 32-Athlete round-robin draws

Table 1.10.4 (c) – 18/u Gold, Silver and Bronze Series (Main Draw Doubles)

Main Draw Doubles	18/u Gold	18/u Silver	18/u Bronze
Main Draw Doubles Winners (each Athlete)	17.50	12.50	7.50
Main Draw Doubles Finalists (each Athlete)	12.25	8.75	5.25
Main Draw Doubles Semi-Finalists (each Athlete)	8.75	5.50	4
Main Draw Doubles Quarter-Finalists (each Athlete)	5.50	4	2.50

1.10.5 – AMT Australian Ranking Tournaments

Table 1.10.5 (a) – AMT Platinum, Gold, Silver and Bronze Series (Qualifying Singles)

AMT Main Draw Singles	Qualifier	Qualifying Round 4**	Qualifying Round 3	Qualifying Round 2
Platinum	75	60	48	12
Gold	38	30	24	6
Silver	<u>19</u>	<u>15</u>	<u>12</u>	<u>3</u>
Bronze	<u>13</u>	<u>10</u>	<u>8</u>	<u>2</u>

Table 1.10.5 (b) – AMT Platinum, Gold, Silver and Bronze Series (Main Draw Singles – Elimination Format)

AMT Main Draw Singles	Winner	Finalist	Semi Finalist	Quarter Finalist	Round of 16*	Round of 32**	Main Draw Conso Winner	Main Draw Conso Finalist
Platinum	450	300	240	180	90	n/a	135	100
Gold	300	225	150	90	60	n/a	68	50
Silver	<u>120</u>	<u>90</u>	<u>60</u>	<u>45</u>	<u>30</u>	<u>10</u>	<u>34</u>	<u>25</u>
Bronze	<u>90</u>	<u>60</u>	<u>45</u>	<u>30</u>	<u>15</u>	<u>5</u>	<u>23</u>	<u>17</u>

* Only applicable for main draws with 17 and above Athletes. Note: Platinum points are only awarded if a Draw Size extension has been approved by the MA.

** Only applicable for main draws with 33 and above Athletes

Table 1.10.5 (c) – AMT Platinum, Gold, Silver and Bronze Series (Main Draw Doubles)

AMT Main Draw Doubles	Winner	Finalist	Semi Finalist	Quarter Finalist
Platinum	112.50	75	60	45
Gold	75	56.25	37.50	22.50
Silver	30	22.50	15	11.25
Bronze	22.50	15	11.25	7.50

1.10.6 – Australian ITF Pro Circuit and Junior Circuit Tournaments

Table 1.10.6 (a) – Australian Pro Tour (Qualifying Singles)

Australian Pro Tour Qualifying	MD Rd 32	Qualifying Round 4*	Qualifying Round 3	Qualifying Round 2
<u>ATP Men's Challenger Events</u>	ATP Pts.	375	250	125
<u>ITF Womens' \$60,000 events and above</u>	WTA Pts.	WTA Pts.	WTA Pts.	WTA Pts.
<u>ITF Womens' \$25,000 events</u>	WTA Pts.	175	100	50
<u>ITF Mens' \$25,000 events and below</u>	250	175	100	50

* Only applicable if there are four rounds of qualifying matches

Table 1.10.6 (b) – Australian Junior ITFs (Qualifying Singles)

Australian ITF Juniors	Qualifier	Qualifying Round 3	Qualifying Round 2
Grade A	ITF Points	ITF Points	45
Grade 1	45	30	20
Grade 2	40	25	17.5
Grade 3	30	20	15
Grade 4	20	15	10
Grade 5	10	7.5	5

Table 1.10.6 (c) – Australian Junior ITFs (Main Draw Consolation Singles)

Australian ITF Juniors	Main Draw Consolation Winner	Main Draw Consolation Finalist	Main Draw Consolation Semi Finalist
Grade 1	50	44	16
Grade 2	40	34	14
Grade 3	32.5	28	12
Grade 4	25	22	8
Grade 5	12.5	11	4

1.10.7 – Australian National Championships (April and September)

Australian ranking points are awarded at the Platinum Junior Tournament level, with points allocations as follows:

Table 1.10.7 (a) – 12/u and 14/u Australian Junior Claycourt and Grasscourt Championships (Main Draw Singles – Compass Draw – 32 players)

Finishing Position	Place	14/u Platinum	12/u Platinum
East Draw Winner	1st	70	30
East Draw Finalist	2nd	49	21
East Draw 3rd Place	3rd	42	19
East Draw 4th Place	4th	35	16
East Draw 5th Place	5th	32	15
East Draw 6th Place	6th	28	13
East Draw 7th Place	7th	26	12
East Draw 8th Place	8th	22	10
North Winner	9th	18	8
North Finalist	10th	15	7
North Semi-Finalist	11th – 12th	12	6
North Quarter-Finalist	13th – 16th	12	6
West Winner	17th	12	6
West Finalist	18th	6	3
West Semi-Finalist	19th – 20th	3	1.50

Table 1.10.7 (b) – 12/u and 14/u Australian Junior Championships / December Showdown (Main Draw Singles – Compass Draw)

Finishing Position	Place	14/u Platinum	12/u Platinum
East Draw Winner	1st	70	30
East Draw Finalist	2nd	49	21
East Draw 3rd Place	3rd	42	19
East Draw 4th Place	4th	35	16
East Draw 5th Place	5th	32	15
East Draw 6th Place	6th	28	13
East Draw 7th Place	7th	26	12
East Draw 8th Place	8th	22	10
North-East Winner	9th	18	8
North-East Finalist	10th	15	7
North-East Semi-Finalist	11th – 12th	12	6
North-East Quarter-Finalist	13th – 16th	12	6
North Winner	17th	12	6
North Finalist	18th	6	3
North Semi-Finalist	19th – 20th	3.75	2.25
North Quarter-Finalist	21st – 24th	2.50	1.50
North-West Winner	25th	2.50	1.50
North-West Finalist	26th	2.50	1.50
North-West Semi-Finalist	27th – 28th	2.50	1.50
North-West Quarter-Finalist	29th – 32nd	2.50	1.50
West Winner	33rd	2.50	1.50
West Finalist	34th	2.50	1.50
West Semi-Finalist	35th – 36th	2.50	1.50
West Quarter-Finalist	37th – 40th	2.50	1.50

Table 1.10.7 (c) – 12/u and 14/u Australian Junior Championships (April, Spetmeber and December – Main Draw Doubles)

Main Draw Doubles	14/u Platinum	12/u Platinum
Main Draw Doubles Winners (each Athlete)	17.50	7.50
Main Draw Doubles Finalists (each Athlete)	12.25	5.25
Main Draw Doubles Semi-Finalists (each Athlete)	8.75	4.00
Main Draw Doubles QFs (each Athlete)	5.50	2.50

Table 1.10.7 (c) – 16/u National Junior Championships (Main Draw Singles)

Main Draw Singles	16/u Platinum (Australian Championships)
Winner	300
Finalist	225
3rd Place	188
4th Place	150
5th Place	135
6th Place	122
7th Place	110
8th Place	90
Round of 16	60
Main Draw Consolation Winner	75
Main Draw Consolation Finalist	56

Table 1.10.7 (d) – 16/u National Junior Championships (Main Draw Doubles)

Main Draw Doubles	16/u Platinum (Australian Championships)
Main Draw Doubles Winners (each Athlete)	75.00
Main Draw Doubles Finalists (each Athlete)	56.25
Main Draw Doubles Semi-Finalists (each Athlete)	37.50
Main Draw Doubles Quarter-Finalists (each Athlete)	22.50s

Table 1.10.7 (e) – 18/u Australian Junior Championships (Main Draw Singles)

Main Draw Singles	18/u Platinum (Australian Championships)
Winner	450
Finalist	300
Semi-Finalist	240
Quarter-Finalist	180
3rd Round Robin	90
4th Round Robin or Qualifier	45

Table 1.10.7 (f) – 18/u Australian Junior Championships (Qualifying Singles)

Qualifying Singles	18/u Platinum (Australian Championships)
Qualifying Round 3	36
Qualifying Round 2	18

Table 1.10.7 (g) – 18/u Australian Junior Championships (Main Draw Doubles)

Main Draw Doubles	18/u Platinum (Australian Championships)
Main Draw Doubles Winners (each Athlete)	112.50
Main Draw Doubles Finalists (each Athlete)	75
Main Draw Doubles Semi-Finalists (each Athlete)	60
Main Draw Doubles Quarter-Finalists (each Athlete)	45

1.10.8 – Teams Events

1.10.8 (a) – 11/u & 13/u Australian Teams Championship

The 11s & 13s Australian Teams Event will be moved from the December Showdown and be conducted in July with teams from Australian states and territories, as well as international teams competing. The event will move to a 11/u and 13/u event from as opposed to a 12/u and 14/u aged event in previous years. Each team will be allowed to nominate a maximum of four (4) athletes. AR points accrued at the 11/u or 13/u Australian Teams Championships will count as one singles result. The Australian Ranking point's allocation for these event will be confirmed prior to the event.

1.10.8 (aa) – 11/u Australian Teams Championship

12/u Australian Teams Championships	Round 1 to Quarter-Final Ties	Playoff Ties	Semi-Final Ties	Final Ties	Bonus Points *
No.1 Singles Rubber	2	2	4	8	10
No.2 Singles Rubber	1	1	2	4	5
Doubles – Deciding Match Rubber	0.5	0.5	1	2	2.5
Doubles – Dead Rubber	0.25	0.25	0.5	1	

*** Bonus points are awarded if a player is undefeated throughout the event in singles or doubles (need to win a minimum of three singles or doubles matches to be eligible for bonus points)**

1.10.8 (ab) – 13/u Australian Teams Championship

14/u Australian Teams Championships	Round 1 to Quarter-Final Ties	Playoff Ties	Semi-Final Ties	Final Ties	Bonus Points *
No.1 Singles Rubber	5	5	10	20	20
No.2 Singles Rubber	2.5	2.5	5	10	10
Doubles – Deciding Match Rubber	1.25	1.25	2.5	5	5
Doubles – Dead Rubber	0.75	0.75	1.25	2.5	

*** Bonus points are awarded if a player is undefeated throughout the event in singles or doubles (need to win a minimum of three singles or doubles matches to be eligible for bonus points)**

1.10.8 (b) – School Sport Australia 12/u Tennis Championships (Bruce Cup)

The Bruce Cup is a state representative team's event for athletes aged 12s & under played in September/October each year. For athletes to be eligible, they must compete in the regional trials and still be registered and attending a legitimate school program. As agreed with School Sport Australia prior to the event, there will be no Australian Ranking points awarded to the team event aspect of the Bruce Cup.

The Australian Ranking points for the individual event (the School Sport Australia National Singles Championships) will count as one (1) 12/u singles result.

Main Draw Singles									
Winner	Finalist	3rd	4th	5th	6th	7th	8th	Rd of 16	Rd of 32
23	16	9	6	5.50	5	4.50	4	2	1

Consolation Singles			
Winner	Finalist	Semi-Finalist	Quarter-Finalist
3.00	2.25	1.10	N/A

1.10.8 (c) – School Sport Australia 19/u Tennis Championships (Pizzey Cup)

The Pizzey Cup is a state representative team's event for athletes aged 19s & under played in May/June each year. For athletes to be eligible, they must compete in the regional trials and still be registered and attending a legitimate school program. As agreed with School Sport Australia prior to the event, there will be no Australian Ranking points awarded to the team event aspect of the Pizzey Cup.

The Australian Ranking points for the individual event (the Tennis Australia Cup) will count as one (1) 18/u singles result.

Main Draw Singles				
Winner	Finalist	Semi-Finalist	Quarter-Finalist	Rd of 16
70	49	35	22	12

Consolation Singles		
Winner	Finalist	Semi-Finalist
17	12	N/A

1.11 Protected Australian Ranking Policy

a) Key Eligibility Criteria

In order to be eligible for a Protected Australian Ranking, an athlete:

- Must have been out of competition a minimum of six (6) months and a maximum of two (2) years; and,
- Must be ranked inside the Top 500 at the time they stopped playing.

b) Application Procedure and Timing

An online Protected Ranking Application form (<https://tatournaments.wufoo.com/forms/protected-australian-ranking-application/>) must be completed and submitted to Tennis Australia for the evaluation of a Protected Ranking status, within six (6) months after their last Australian Ranking tournament played before being out of competition, and no less than 30 days before they plan to play an event with their Protected Ranking.

i. Request due to Injury/illness

The Protected Ranking Application must be submitted to Tennis Australia along with the following medical documentation:

- Evidence of clinical visit(s);
- The diagnosis of condition; Physicians notes/documentation (subject to applicable laws) confirming a minimum six (6) months out of competition; and
- All relevant laboratory tests and applicable surgical reports.

If an athlete is requesting a Protected Ranking due to more than one (1) injury, each one (1) of these injuries must be documented.

ii. Request due to Pregnancy

Maternity and injury/illness Protected Ranking requests must be submitted to Tennis Australia (as above) and will be governed by the same rules as a request due to injury/illness. However, in cases of absences due to maternity leave, for an athlete to be eligible for a Protected Ranking, the athlete must be ready to play her first tournament within 12 months of the birth of her child.

Note: Medical Documentation Handling and Requests for Subsequent Medical Status Reports

All medical documentation provided to the Tournaments Department will be kept in an athlete's confidential file and will not be released to any third party without the athlete's prior written approval.

c) Usage Criteria and Guidelines

i. Protected Ranking

An athlete's Protected Ranking will be the ranking they earned immediately after the points of the last Tournament they played are added to the Australian Rankings (see 1.4, Processing the Australian Rankings).

ii. Mandatory Out-of-Competition Period

The six-month mandatory out-of-competition period is calculated using the last day of the last tournament an athlete played, whether in singles or in doubles. The earliest an athlete may return to competitive tennis is at any tournament scheduled to start after the six-month period expires.

iii. Return to Competition

'Return to Competition' is defined as an athlete playing any tennis event, regardless whether Australian Ranking points are, or are not awarded.

d) Using the Protected Ranking

i. Timing

An athlete has eight (8) weeks from the date they return to competition to elect to activate their Protected Ranking granted by Tennis Australia.

ii. Activation of Protected Australian Ranking

An athlete must elect to activate their approved Protected Australian Ranking by the Wednesday preceding the fortnightly Friday release of the Australian Rankings in which they will be allocated a Protected Australian Ranking.

Once an athlete elects to activate their Protected Ranking, they may not change the designation after competing in one (1) match at a tournament.

iii. Duration of Protected Australian Ranking

As of the fortnightly Friday release of the Australian Rankings, an athlete will be allocated a Protected Australian Ranking for a duration of two (2) calendar months.

iv. Entering Tournaments

An athlete must enter any tournament he/she wishes to play with their Protected Australian Ranking online at <http://tournaments.tennis.com.au>. They must also indicate in the comments section that they are playing under a Protected Australian Ranking.

v. Re-injury

An athlete who Returns to Competition and is re-injured (with the same injury) while playing with their Protected Ranking activated may request for special consideration to preserve their Protected Ranking status for an additional twelve (12) months.

This request must be made in writing to the Tennis Australia tournaments department via email to tournaments@tennis.com.au within the two (2) month period of competing with their Protected Ranking.

vi. Lucky Loser Status

An athlete's Protected Ranking may be used to determine their Lucky Loser status.

vii. Seeding

An athlete may be seeded using their Protected Australia ranking in any tournament.

viii. Australian Championships (December Showdown)

A Protected Ranking may not be used to gain entry into either the 12s, 14s, 16s or 18s Australian Championships at Melbourne Park each December.

e) Athlete Responsibilities

It is an athlete's responsibility to check that their Protected Ranking has been activated on the Australian Rankings website. Any perceived anomalies or queries regarding their own Protected Australian ranking should be communicated via email to Tennis Australia via tournaments@tennis.com.au.

1.12 Amendments

The Australian Ranking Rules and Regulations may only be amended, repealed or otherwise modified, in whole or in part, by Tennis Australia at any time including with retrospective effect. Tennis Australia reserves the right to review and amend the Australian Ranking Rules and Regulations during the year, including with retrospective effect, if it determines that the amendments are in the best interest of the athletes and the Australian Rankings. These amendments will be published on the Tennis Australia website – www.tennis.com.au.

2. Tennis Australia tournament conditions

All JT and AMT events must include the following information if they choose to produce an event fact sheet or entry form (this information must otherwise be included in the Tournament Planner (TP) online tournament regulations section). Tennis Australia may update this information from time to time:

TENNIS AUSTRALIA – STANDARD TOURNAMENT ENTRY CONDITIONS

IF YOU BREACH THESE CONDITIONS YOU MAY BE EXCLUDED FROM PARTICIPATION IN A TOURNAMENT.

2.1 Background

- i. Your participation in a tennis tournament operated and sanctioned by Tennis Australia Limited (TA) or an affiliated Australian tennis organisation (Event Host) is subject to compliance with the following conditions.
- ii. Tournaments will be conducted by the Event Host in accordance with the ITF Rules of Play and all relevant TA policies (as developed or amended by TA from time to time) including, but not limited to, the Member Protection Policy, the Anti-Doping Policy, the Code of Behaviour, the Disciplinary Policy and the Uniform Tennis Anti-Corruption Program made available at www.tennis.com.au/about-tennis-australia/reports-and-policies/policies. Your participation in any tournament is subject to compliance with these policies and it is your responsibility to review these and seek clarification on applicable rules and policies, if you need it, from the TA's Tournaments Department. The Event Host may also impose tournament-specific rules and regulations.

2.2 Conduct

- i. You agree to compete at the best of your ability at all times throughout the tournament.
- ii. You agree to be respectful of tournament sponsors and suppliers and agree that you will not publicly voice an endorsement or acknowledgement of any product, service or company while participating in any official tournament ceremony.
- iii. You agree not to engage in any conduct or do anything that will bring, or is likely to bring, TA, the Event Host or the tournament into ridicule or disrepute.

2.3 Betting Activity

In accordance with the Uniform Tennis Anti-Corruption Program, players and their "related persons" (any coach, trainer, therapist, physician, management representative, agent, family member, tournament guest, business associate or other affiliate or associate of any player, or any other person who receives accreditation at an tournament):

- a. MUST NOT wager or attempt to wager on the outcome or any other aspect of any tennis match or competition;
- b. MUST NOT solicit or facilitate any other person to wager on the outcome or any other aspect of any tennis match or competition;
- c. MUST NOT contrive or attempt to contrive the outcome or any other aspect of a tennis match;
- d. MUST NOT provide information to others concerning the status of players, or any other aspect of a tennis match which is not information in the public domain;
- e. MUST NOT solicit or facilitate any player to not use his or her best efforts in a tennis match; and
- f. MUST report any knowledge or suspicion of any inappropriate betting activity to the Tennis Integrity Unit by contacting info@tennisintegrityunit.com

Nothing in the above paragraph shall modify or limit the full text of the Uniform Tennis Anti-Corruption Program.

2.4 *Spectator Behaviour*

You should inform your supporters of TA's expectations regarding spectator behaviour. Inappropriate spectator behaviour may result in disciplinary action in accordance with the above policies including denial of entry to future tournaments in Australia. Regulated spectator behaviour includes, but is not limited to, behaviour at tennis venues, tournament hotels and in transport vehicles.

2.5 *Membership*

To enter a sanctioned tournament, you must have a membership number, which is provided to you by becoming a member of TA or an affiliate. This requirement does not apply to events which carry ATP/WTA/ITF world ranking points.

TA recommends that your coach is a qualified and registered TA coach member. This will ensure that your coach has:

- (a) a coaching qualification recognised by TA and the Australian Sports Commission;
- (b) up to date coaching credentials via ongoing professional development;
- (c) satisfied legislative requirements for Working With Children Checks, National Police Check; and
- (d) up to date first aid qualifications.

Further information on coaches, including a list of certified coaches, can be viewed at www.tennis.com.au

2.6 *Publicity, Promotions and Use of Image*

- i. In consideration of accepting your entry into the tournament, you grant and assign to TA and the Event Host and any applicable third party (at the reasonable discretion of TA) the right in perpetuity throughout the world to make, use, show and reproduce moving pictures, still pictures and live, taped or filmed television, sound recordings and any other reproductions of any description of you during or in connection with the tournament. You agree that your name, voice, likeness, image and biographical material may also be used and reproduced in any way for the purpose of providing information and news in relation to the tournament, audio visual coverage, distribution and broadcast of the tournament, archival purposes, and publicising, promoting and advertising TA and the tournament. You acknowledge and agree that this usage, including for commercial purposes, is without compensation or notice to you, heirs, executors, administrators or assigns.
- ii. TA or the Event Host may appoint third parties to attend selected tournaments and produce recordings of on-court action (Authorised Filming). Third parties appointed to conduct Authorised Filming may make and reproduce still and motion pictures of participants for the purposes of selling footage back to TA, broadcasters or participants. You must give verbal or written notice to any person conducting Authorised Filming prior to the match starting if you do not wish to be filmed. It is your responsibility to seek out the person conducting Authorised Filming if you do not wish to be filmed. TA and the Event Host will take reasonable steps to comply with your wishes regarding filming, subject to any agreements regarding broadcast of tournament matches.

2.7 *Filming and Photography*

- i. You acknowledge that, other than for private domestic purposes only, you and your coach, trainers and other guests are strictly prohibited from taking any photographs, still images, sound recordings, visual footage, audio-visual footage and any other reproductions in connection with the tournament by any means (Recordings), for commercial purposes. If you do take any Recordings without TA's consent you will, on request from TA:
 - (a) assign all copyright and all other intellectual property rights in the Recordings to TA; and

- (b) consent to TA's use, dealing and exploitation of the Recordings for any purpose in any media in perpetuity world-wide and without payment to you.

- ii. Filming or photography of players on court for private domestic purposes is only permitted where:
 - (a) both players provide their express consent both to the filming/photography and to the purpose for which it is being taken (or, where a player is under 18, their parent or guardian provides express consent);
 - (b) the Event Host provides its express consent to the proposed filming/photography on its premises; and
 - (c) a flash is not used.

- iii. Filming and photography is strictly prohibited in restricted areas of a tournament including change rooms.

- iv. At all times, the tournament referee has discretion in relation to filming and photography. Any person acting inappropriately in the opinion of the tournament referee may be directed to cease taking photographs/film, may have his/her recording device confiscated while onsite at the tournament or may be asked to leave the tournament venue.

2.8 **Medical Treatment**

- i. In consideration of TA or the Event Host accepting your entry into a sanctioned tournament, you: consent to the Event Host or TA's doctors and other health service providers (including but not limited to primary health care providers and physiotherapists) consulting with, screening and treating you, and providing emergency assistance or transport;

- ii. agree to pay any costs accumulated from the use of such health service providers during the course of the tournament, unless agreed otherwise; and

- iii. acknowledge and understand that:
 - a. TA and the Event Host are not responsible for medical treatments and only facilitate the services described in this paragraph as they assist participants in the tournament; and
 - b. there are risks associated with obtaining treatment on-site at the tournament from doctors and other health service providers and you accept those risks voluntarily.

- iv. You release and discharge, on behalf of yourself and your heirs and legal representatives, TA and the Event Host and their officers, directors, employees and representatives, from any and all claims, demands, suits, damages, costs (including legal costs), loss and injury you may suffer or sustain, by negligence or otherwise, to the fullest extent permitted by law in connection with any medical and health treatments you receive during the tournament.

2.9 **Medical Records**

In consideration of TA or the Event Host accepting your entry into a sanctioned tournament and providing you with medical and other health services, you:

- (a) consent to Event Host and TA collecting and storing your personal information and records of medical and health consultations or treatment (Medical Records) (including by entering such Medical Records into TA's electronic athlete management system); and
- (b) acknowledge that, subject to Event Host and TA complying with applicable privacy and health records legislation, your Medical Records may be:

- i. disclosed to doctors, physiotherapists and other relevant health service providers who require access to such information in the course of treating you; and
 - ii. used by TA for the purpose of assessing and improving its programs and tournaments or for research;
- c) You may revoke the consent in clause 18, but not retrospectively, by signed written request to TA. Following such revocation, TA will nonetheless retain a copy of your Medical Records for use if you participate in any subsequent tournament, and otherwise for the purpose of assessing and improving its programs and tournaments or for research. TA and the Event Host will otherwise deal with your Medical Records in accordance with applicable privacy and health records legislation.

2.10 Privacy

- i. TA and Event Hosts require the information requested in the tournament registration process to administer its tournament and for related purposes. In this regard, you acknowledge and agree that TA may publish in any media (including print and online) and disclose to any person, your name, age, date of birth, general locality and other relevant information for the purposes of TA's national player ranking systems, tournament schedules and other similar purposes.
- ii. In addition to as set out in paragraph above, you consent to the collection and use of your personal information by TA and the disclosure of that information by TA for the purposes of tournament management, surveys and marketing, including the promotion of the Australian Open and related events, offers from TA and other Australian Tennis Organisations regarding other events, products and services, and offers from third parties who have a relationship with TA or other Australian Tennis Organisations about their events, products and services. The personal information you submit will be collected, used and disclosed in accordance with any privacy statement disclosed to you and the Tennis Privacy Policy (<http://www.tennis.com.au/privacy>), which contains information about how you may access and seek correction of your personal information, how you can complain about a breach of your privacy, and how the complaint will be dealt with. Where personal information is used for marketing purposes, you will have the opportunity to 'opt out', which you can do at any time in accordance with the Tennis Privacy Policy.
- iii. It is your responsibility to keep your personal details, including contact information, accurate and up-to-date so TA and the Event Host can most effectively communicate with you and operate the tournament for your benefit.

2.11 Breach

TA or the Event Host may impose a sanction upon any participant who fails to abide by these tournament entry conditions or any of the rules set out in paragraph 2.1 (background), at the discretion of the tournament referee. Such sanction may include but is not limited to, financial penalty, loss of tournament points, official warnings or full expulsion from the tournament. Sanctioned players may appeal such decisions in accordance with the TA Code of Behaviour Policy.

2.12 Amendments

- i. TA may review and amend these standard tournament entry conditions where TA reasonably believes the amendments to be in the best interests of the athletes and the tournament. These amendments will be published on the Tennis Australia website at www.tennis.com.au
- ii. If you have a query regarding these Conditions, contact TA by using the "Contact Us" details on the TA website: www.tennis.com.au.

2.13 Athlete Management System Consent Conditions (relevant for TA run events only)

Refer to Appendix 3.

3. Athlete Management System Consent Conditions

3.1 Consent to Treatment

"In consideration of Tennis Australia accepting my entry into events sanctioned by it and providing me with medical and other health services during those events, I consent to Tennis Australia's doctors and other health service providers (including but not limited to its Primary Health Care Providers or physiotherapists) consulting with, screening and treating me."

3.2 Consent to Collection and Storage of personal and health information

In consideration of Tennis Australia accepting my entry into events sanctioned by it and providing me with medical and other health services during those events,

- a) I consent to Tennis Australia collecting and storing my personal information as well as records of consultations and/or treatment ("Database Information") (including by entering such details into the electronic Athlete Management System ("AMS").
- b) I acknowledge that, subject to Tennis Australia complying with applicable privacy and health records legislation, my Database Information may be:
 - disclosed to doctors, physiotherapists and other relevant health service providers who require access to any Database Information in the course of treating me; and
 - used by Tennis Australia for the purpose of assessing and improving its programs and events or for research.
- c) I understand that tennis is a physical sport and that there is risk of injury involved in participating in and being present at Tennis Australia sanctioned events, and I consent to Tennis Australia disclosing my Database Information and obtaining on my behalf any emergency medical assistance, treatment and/or transport as deemed reasonably necessary during my participation in such events. This assistance, treatment and transport will be at my expense unless agreed otherwise
- d) i. I have no proprietary rights to the AMS, nor to any Database Information.
ii. upon the termination or expiry of this agreement Tennis Australia will:
 - retain a copy of all Database Information for use in any subsequent relationship into which I enter with Tennis Australia
 - use my Database Information for the purpose of assessing and improving its programs and events or for research
 - deal with such Database Information in accordance with applicable legislation including but not limited to the Privacy Act and the Health Records Act;

Sub-clauses (i) and (ii) above will survive any termination of this agreement.

3.3 Application of Consents

The consents in clause (b) above extend to all events at which doctors and Primary Health Care Providers are engaged and made available by Tennis Australia.

3.4 *Surveys*

I consent to completing any surveys or questionnaires or participating in research administered or approved by Tennis Australia which is relevant to tournaments and events sanctioned by Tennis Australia, provided that I understand that I can withdraw that consent at any time in relation to any particular survey, questionnaire or research activity.

3.5 *Term and Termination*

I agree that the above consents will be binding from November 2009 (being the date from which the AMS has been available) for as long as I participate in events sanctioned by Tennis Australia, or until I otherwise advise Tennis Australia in writing that I wish to revoke those consents.

3.6 *Privacy*

Tennis Australia requires the information requested in this Consent Form to administer its events and for related purposes which can reasonably be expected (including asking you for feedback and publishing Athlete ranking results). In this regard, you acknowledge and agree that Tennis Australia may publish in any media (including print and online) your name, age, date of birth, locality and other relevant information for the purposes of Tennis Australia's national Athlete ranking systems and for similar purposes. You are able to access your personal information through Tennis Australia upon reasonable notice. Except where permitted or required by law, or where your consent is obtained, this information will not be disclosed to third parties.

In addition, Tennis Australia may use your personal information to advise you of promotional offers, marketing campaigns and other like activities. Please inform Tennis Australia if you do not wish to receive such communications.

3.7 *Release and Indemnity*

In consideration of my participating in Tennis Australia's events, I agree to release and discharge Tennis Australia from all liability, including but not limited to Tennis Australia and its directors, officers, employees, volunteers and agents' negligence or carelessness.

Without limiting the foregoing, I also agree to release, defend, hold harmless and indemnify Tennis Australia and its directors, officers, employees, volunteers and agents from and against any actions, proceedings, claims, demands, expenses (including legal expenses), damages and liabilities howsoever arising or incurred as a result of or in connection with my participation in those events, my conduct and/or my negligence.

3.8 *Amendments*

Tennis Australia reserves the right to review and amend the above entry conditions including with retrospective effect where Tennis Australia in its sole discretion deems the amendments to be in the best interest of the athletes and the tournament. These amendments will be published on the Tennis Australia website at www.tennis.com.au.

3.9 *Participant Agreement*

I have read and understood and agree to be bound by the above terms and to give the above consents. I warrant that all information provided is true and correct. In participating in the events, I consent to being bound by Tennis Australia's policies, including but not limited to its Member Protection Policy, Disciplinary Policy and Code of Behaviour.

4. Tennis Australia Extreme Weather Policy (updated July 2018)

Tennis Australia (TA) recognises the dangers of extreme weather and the need to ensure that there are appropriate policies and procedures in place to mitigate risks to players, officials, coaching staff and spectators at all of our tournaments and competitions should an extreme weather event occur. You can view the document via <https://www.tennis.com.au/doc/extreme-weather-policy>

5. Tennis Australia Code of Behaviour

The Code of Behaviour regulates behaviour breaches related to and during tournaments and weekly competitions in Australia. You can view the document via <http://www.tennis.com.au/doc/code-of-behaviour>

6. Registered Assistance Dog – TA Policy

6.1 A Registered Assistance Dog (RAD) is permitted onto court during practice, warm-up and competitive matches provided always that:

- (a) it is securely tied up to the player's chair; and
- (b) it does not pose at the official's sole discretion (or in the absence of an official, the tournament director's sole discretion) any health or safety risk to any other person.

6.2 The player seeking to bring the RAD onto court must:

- (a) obtain prior approval from an official or tournament director; and
- (b) provide the official or tournament director with evidence of appropriate accreditation and registration for the RAD.

6.3 During a match, RADs cannot assist a player with any procedure of a tennis match (e.g. collecting tennis balls or other equipment).

6.4 If a RAD interrupts play during a match:

- (a) On the first occasion: a warning will be issued to the player;
- (b) On the second occasion: a final warning will be issued to the player; and
- (c) On the third occasion: the RAD will be removed from the court.

6.5 In addition to any procedures invoked under paragraph 4, if a RAD interrupts a point, it will be considered deliberate interference and the player loses the point.

6.6 Notwithstanding paragraph 4 and 5 above, if the official or tournament director considers that a RAD is causing unreasonable or sustained interference to play, the official or tournament director may immediately remove the RAD from the court.

PLAYERS' DRESS AND EQUIPMENT

AMT/Junior Tour All events

GENERAL TOURNAMENT PLAY:

Non-tennis clothing is not permitted.
(Eg. dress shirts, singlets, football shorts, jumpers, walk shorts, gym shorts, jeans etc)
Players should wear clean & customarily acceptable tennis attire.

WARM-UP CLOTHING, SWEATERS, JACKETS:

Warm-up clothing must comply with Manufacturer, Commercial & Team or Club clothing logo regulations. Players may wear warm-up clothing during the match itself only with prior approval of the Referee. Jackets with hoods allowed.

TEAM OR CLUB REP CLOTHING:

Players are permitted to wear, club, regional, state, or national representative clothing/uniforms.

Rep logos: MAX 5sq inches/32sqcms.
Located anywhere on clothing incl caps.

Logos which advertise specific coaching or tennis related businesses or private academies must comply with commercial logo restrictions

CAP, HAT, HEADBAND AND WRISTBAND:

Any headwear deemed by the referee to be appropriate for tennis is allowed.

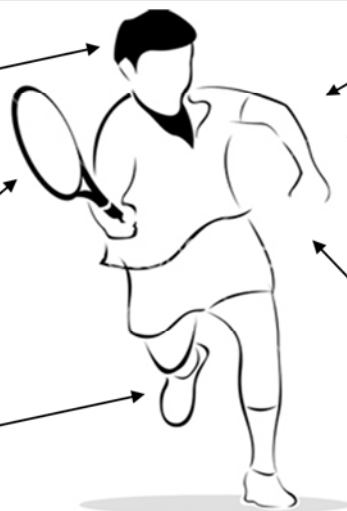
Any writing, logo, or design must be "tennis specific".

No logo size or number restrictions
(Emphasis placed on players wearing headwear whenever possible)

RACKET: Strings and frame / SOCKS AND SHOES/ BAGS, TOWELS

For all of these...

No logo restrictions



MANUFACTURER'S LOGOS:

SHIRTS: SLEEVES

One (1) logo each sleeve - no size restriction

FRONT, BACK, COLLAR, SHOULDER SEAM

MAX Three (3) logos in any combination of these locations. No size restriction

SHORTS:

MAX three (3) logos anywhere on shorts.

No size restrictions

COMPRESSION SHORTS/LEG-INS:

No restriction on logo size or number

**Must be worn under normal shorts/skirt

COMMERCIAL LOGOS:

(including private academies/tennis businesses)

Two (2) commercial logos allowed

anywhere on clothing

MAX 3 sq inches/19.5 sq cms each.

Note: Commercial logos placed anywhere other than on sleeves will render clothing illegal for ITF level events.

Note:

1. Players competing in ITF events [Junior and Pro-tour] should be aware of tougher clothing restrictions at that level- logo size, number, placement- check ITF regulations.
2. No taping can be used to cover illegal logos