

# NATIONAL COURT REBATE



**GET  
COURT  
UP**

## **WHAT IS THE NATIONAL COURT REBATE**

Tennis Australia's facility funding program assisting affiliated tennis clubs & schools to create positive environments for the long term success of tennis in Australia.



## 2016-2017 NATIONAL COURT REBATE

176 Projects

\$34 Million

342 New Or  
Resurfaced  
Courts

155 ANZ Hot  
Shot Courts

## WHAT ARE THE PREREQUISITES?

Affiliated

OHC  
Certified

TA Coach Member  
Operating within  
the Venue

Consultation with  
TW

Venue is accessible  
to wider community  
(Non Members)

Project Outcomes  
have been  
identified.

# WHAT ARE THE FUNDING CATEGORIES

Funding Category	Description	Potential Rebate
<b>Hot Shots</b>	Purpose built Hot Shots courts, Blended lines for Hot Shots on existing tennis courts, or Line markings for Hot Shots on existing play spaces	Up to 100% of the total project cost to a maximum of \$10,000 (GST exclusive)
<b>Access</b>	Tennis Australia's Book a Court system with integrated access technology and optional court lighting control.	Up to 50% of the total project cost to a maximum of \$6,000 (GST exclusive) per venue
<b>Lighting</b>	Upgrade of court lighting to LED technology	Up to 30% of the total project cost
<b>Strategy &amp; Planning</b>	Local Government Strategy, Venue Management Development and Change Planning	Up to 25% of the total project cost
<b>Develop</b>	<b>Development Projects</b> Total Project Value of \$200,000 to \$1,000,000 (GST Exclusive) Venue redevelopments including new courts, strategic surface conversions and clubhouse upgrades	Up to 20% of the total project cost
<b>Major Projects</b>	<b>Major Projects</b> Total Project Value greater than \$1,000,000	Up to 15% of the total project cost to a maximum of \$200,000 (GST exclusive)
<b>Maintenance</b>	Maintenance projects such as court resurfacing, fencing replacement and renewal of associated tennis infrastructure.	Up to 10% of the total project cost

# HOW DO THE FUNDING CATEGORIES EFFECT FUNDING MODELS

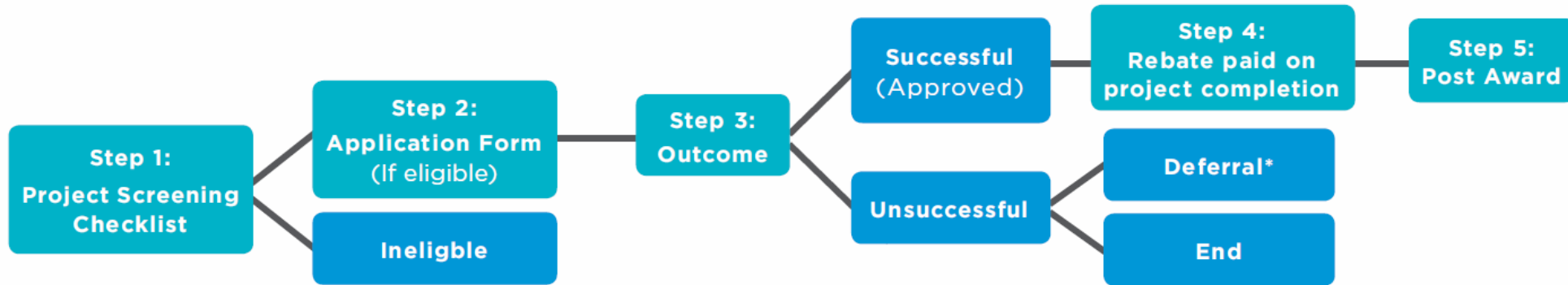
Resurfacing Example		
Gov Funding	\$ 15,000.00	30%
LGA	\$ 15,000.00	30%
Tennis Club	\$ 15,000.00	30%
NCR	\$ 5,000.00	10%
	\$ 50,000.00	100%

Lighting Example		
Gov Funding	\$ 25,000.00	17%
LGA	\$ 25,000.00	17%
Tennis Club	\$ 55,000.00	37%
NCR	\$ 45,000.00	30%
	\$ 150,000.00	100%

Court Conversion Example		
Gov Funding	\$ 60,000.00	20%
LGA	\$ 80,000.00	27%
Tennis Club	\$ 100,000.00	33%
NCR	\$ 60,000.00	20%
	\$ 300,000.00	100%

Planning Example		
Gov Funding	\$ 13,000.00	33%
LGA	\$ 13,000.00	33%
Tennis Club	\$ 4,000.00	10%
NCR	\$ 10,000.00	25%
	\$ 40,000.00	100%

# WHAT IS THE PROCESS



Announcement	Application Due Date	Funding Announcement
1	31 August 2018	September 2018
2	30 November 2018	December 2018
3	28 February 2019	March 2019
4	10 May 2019	May 2019

## WHAT MAKES A STRONG APPLICATION?

Completing all your pre-requisites well.

Identifiable and understandable need with evidence.

Contribution from the Tennis Club.  
Monetary & Voluntary Labor

Consultation & support from LGA

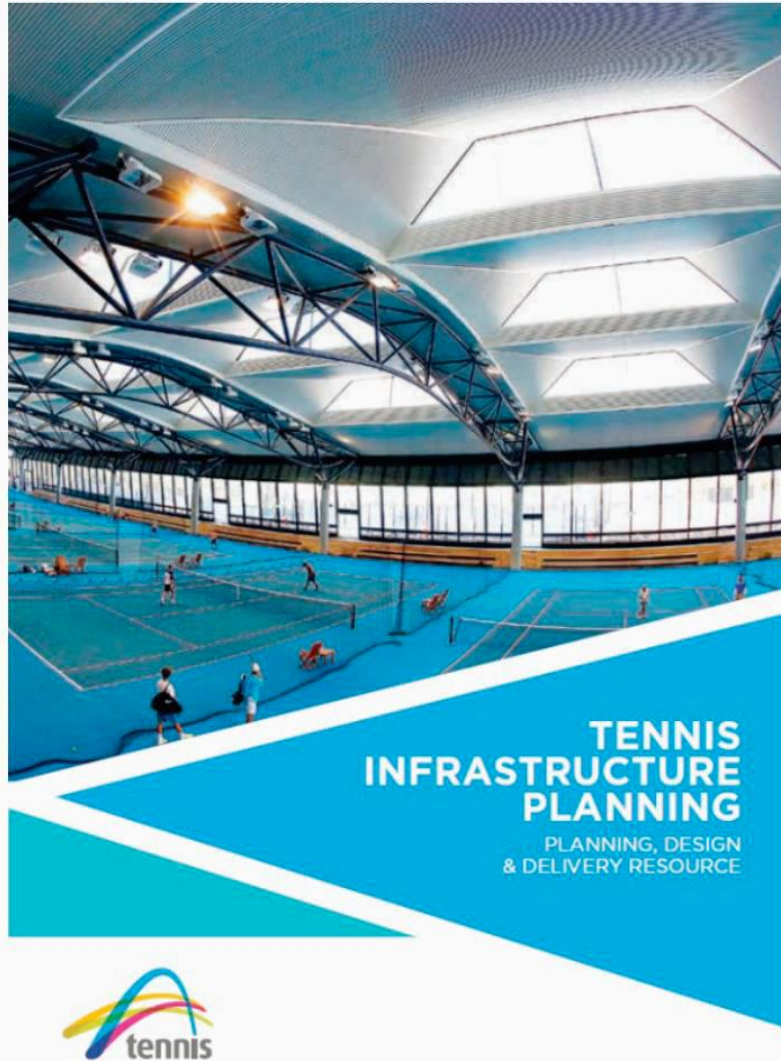
The project will lead for a more sustainable club.

The funding model is weighted fairly.



# 7 STEP PROJECT PATHWAY





**NEW**

## Tennis Infrastructure Planning Resource



# STRATEGIC PLANNING

The Strategic Planning phase is the cornerstone of the project pathway. For significant projects which require a higher level of funding support, a strategic basis must be established and agreed to ensure the project meets tennis' strategic objectives relevant to the project stakeholders.

Strategic Plans come in a variety of forms and at a minimum a proposed project must be considered in the following:

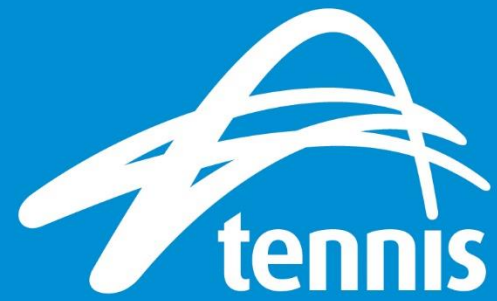
- Member Association Strategic Infrastructure/Facility Plans
- Local Government Tennis or Sport/Open Space Strategy or Master Plan
- State Government Planning
- Facility/Club/Operator Strategic Plan

If a project does not have any strategic basis, we may need to review the justification of the project.



# ALEXANDER PARK COURT CONVERSION 16/17





**GET  
COURT  
UP**