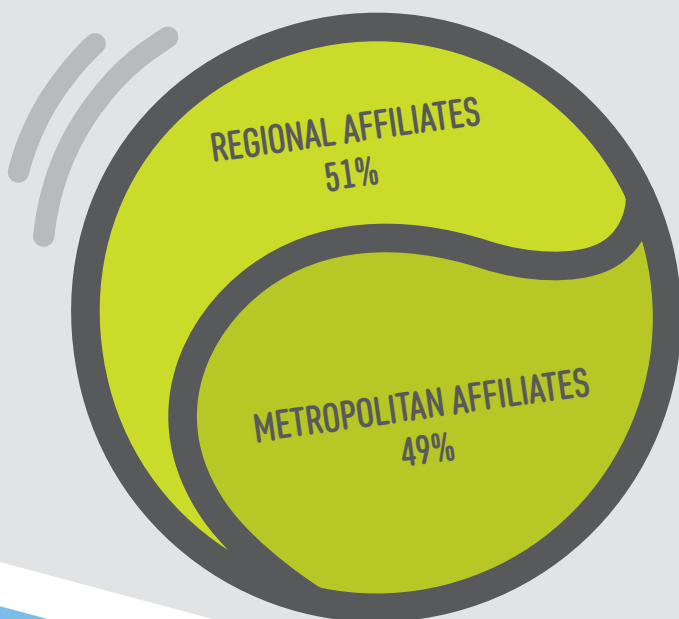
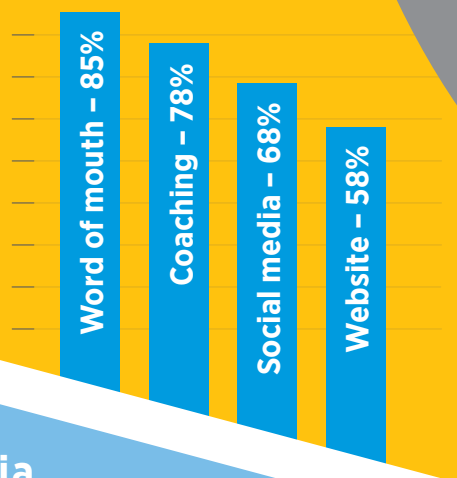


2017 TENNIS WEST AFFILIATE SURVEY RESULTS

41% OF AFFILIATES RESPONDED TO THIS SURVEY

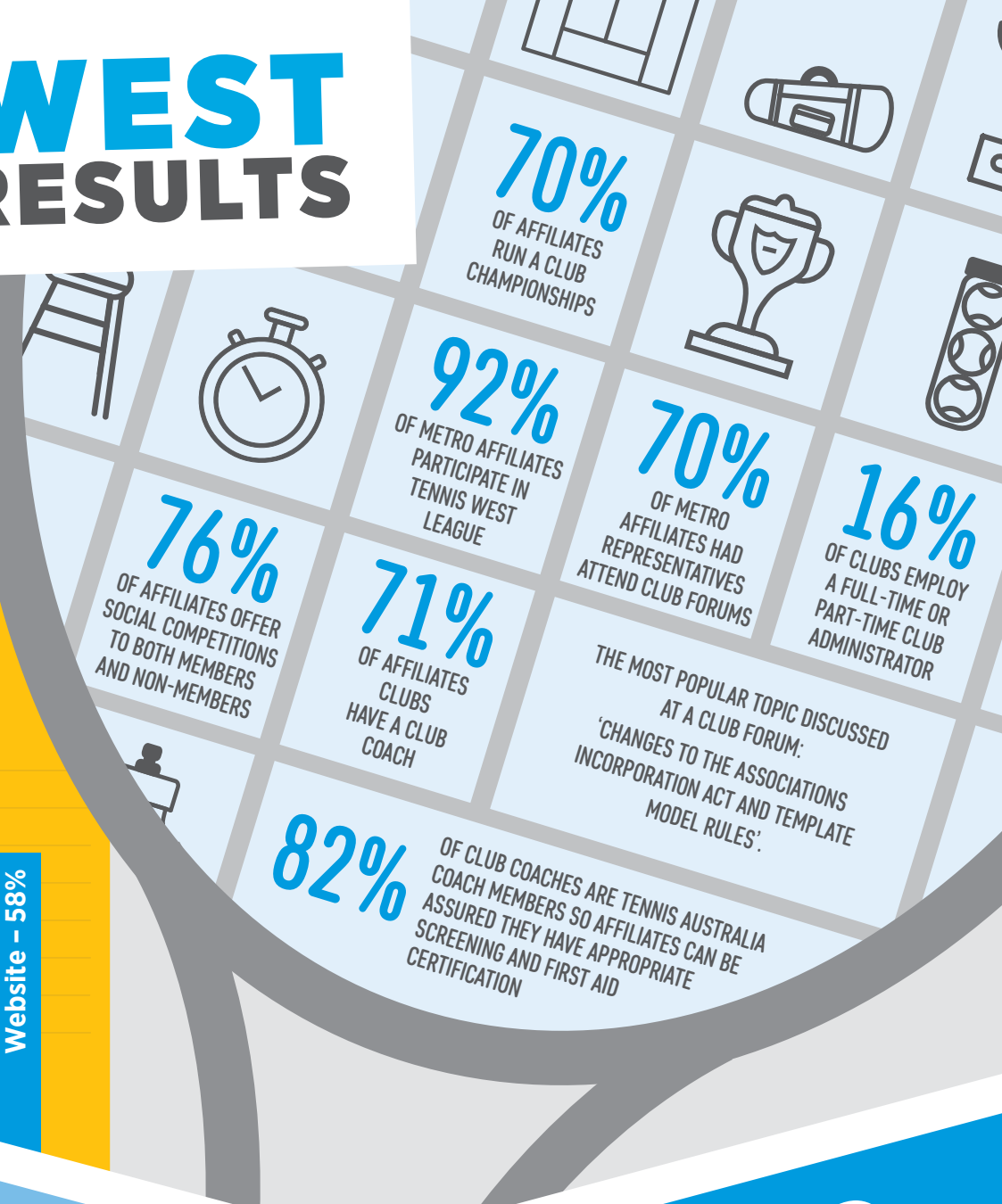


THE MOST
COMMON
STRATEGIES
USED BY
AFFILIATES
TO GROW
PARTICIPATION:



In May 2017, Tennis West surveyed its affiliates to help shape the future of tennis in Western Australia.

The responses will allow us to better assist in growing participation and improving the support offered to our affiliates. Here is a snapshot of the responses...



GOOD NEWS STORIES

"We have taken junior membership from 0 to 92 in one year"

"Social tennis numbers have doubled in the last three months"

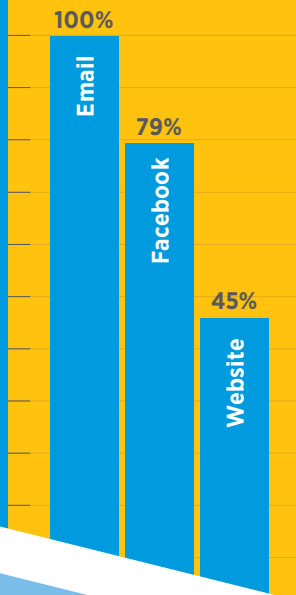
"We ran an additional Open Day during the Australian Open. It was very successful"

"The club has established excellent relations with the elected members and council staff"

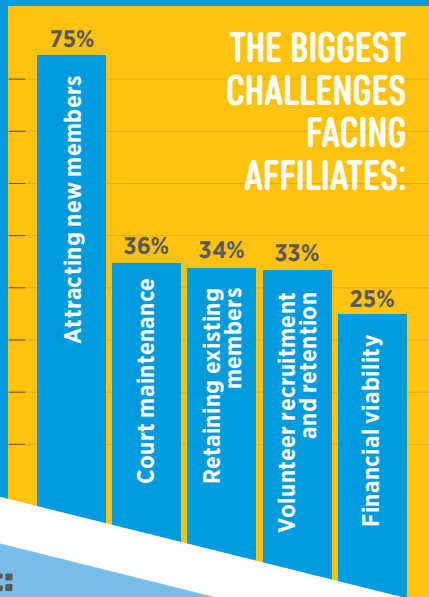
"Very good club and coach relationship"

"The club has been very innovative in raising funds for facility improvements"

THE MOST POPULAR METHODS USED BY AFFILIATES TO KEEP IN CONTACT WITH MEMBERS AND PARTICIPANTS:



THE BIGGEST CHALLENGES FACING AFFILIATES:



THE MOST VALUABLE BENEFITS OF AFFILIATION:

- 1 Access to Tennis West/ Tennis Australia grants and funding
- 2 Insurance
- 3 Donation of prizes/ giveaways
- 4 Ability to purchase tennis equipment
- 5 Tennis West league

WE HEAR YOU!



"WE WOULD LIKE MORE HELP WITH OUR COURT RESURFACING PROJECT"

"REGULAR CONTACT FROM A TENNIS WEST REPRESENTATIVE WOULD BE USEFUL"

"I WOULD LIKE SOMEONE TO HELP GUIDE ME ON WHAT TO DO WITH THE NEW ASSOCIATIONS LAWS"

"WE WOULD LIKE ASSISTANCE IN APPROACHING LOCAL SCHOOLS"

Tennis West's Places to Play Manager can assist clubs with a variety of facility development projects, including court resurfacing. Assistance is available throughout the project, from the planning stages, to sourcing contractors and applying for funding.

Tennis West's Participation Leaders (PLs) are dedicated to supporting our affiliates in growing participation in tennis in Western Australia. Tennis West has three PL's who service the three metropolitan areas and 15 country zones. Throughout the coming year, the PLs will continue to assist affiliates via face-to-face visits and regular contact.

In conjunction with Tennis Australia, Tennis West has created a template constitution which affiliates can use as a guide to update their constitution as required under new incorporated associations legislation in WA. Further information and assistance is available by contacting Tennis West.

Tennis West has a dedicated Schools Coordinator, who can help affiliates and coaches approach and form partnerships with schools in their local area.

Contact Tennis West:

Web: tennis.com.au/wa

Phone: (08) 6462 8300

Email: wainfo@tennis.com.au

Address: Victoria Park Drive, Burswood WA 6100

