



BETTER TOGETHER

TENNIS VICTORIA AFFILIATION | 2020 - 2021



The background image shows a wide-angle view of a red clay tennis court. In the foreground, a black chain-link fence runs across the bottom. Several people are on the court: one person is in the middle ground near the net, another is further back on the right, and a third is in the lower foreground near the fence. The court is surrounded by a black fence, and beyond that, there are trees and a cloudy sky. A solid blue vertical bar is on the right side of the image. Overlaid on the image are four numbered sections with text and small blue squares.

01

YOUR AFFILIATION
WORKING FOR YOU

02

VICTORIAN TENNIS
IS...

03

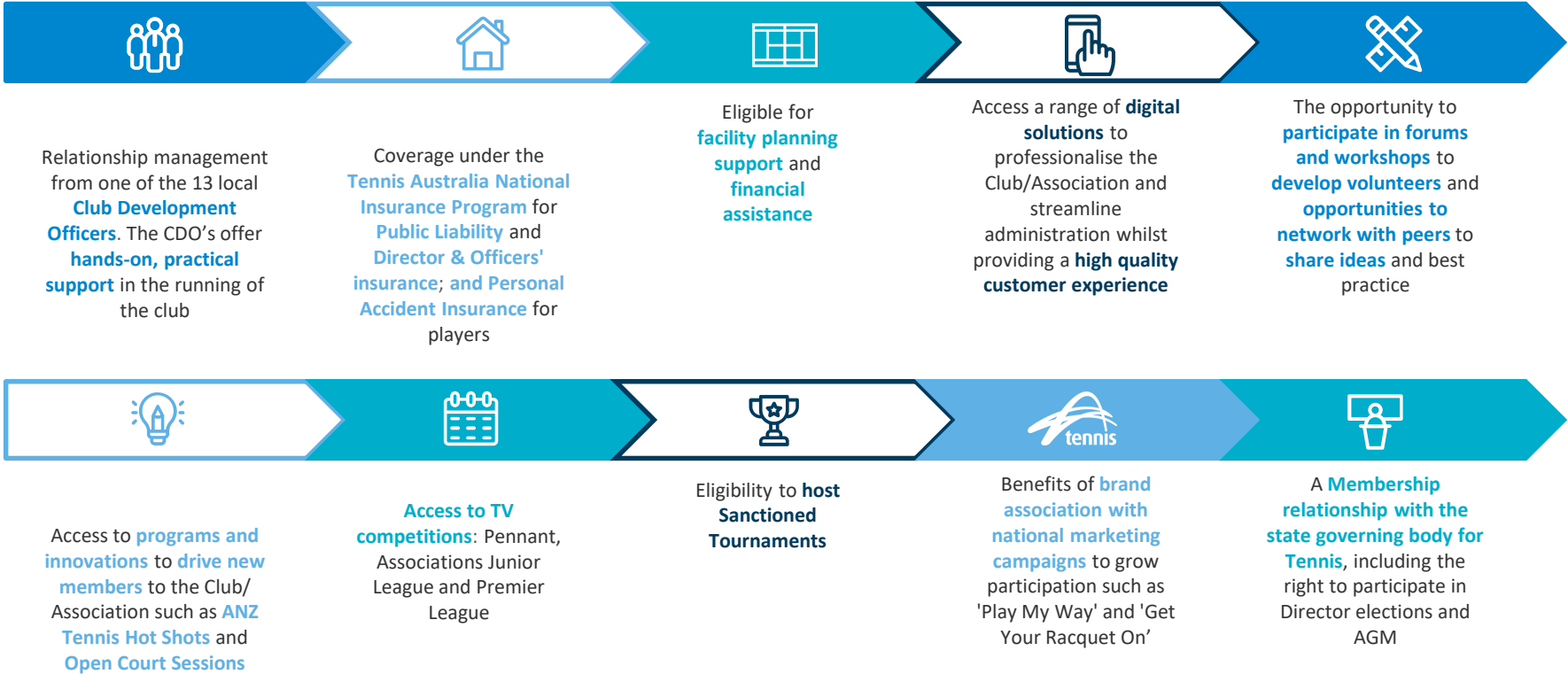
YOUR AFFILIATION EXPLAINED

04

HOW TO AFFILIATE

YOUR AFFILIATION WORKING FOR YOU

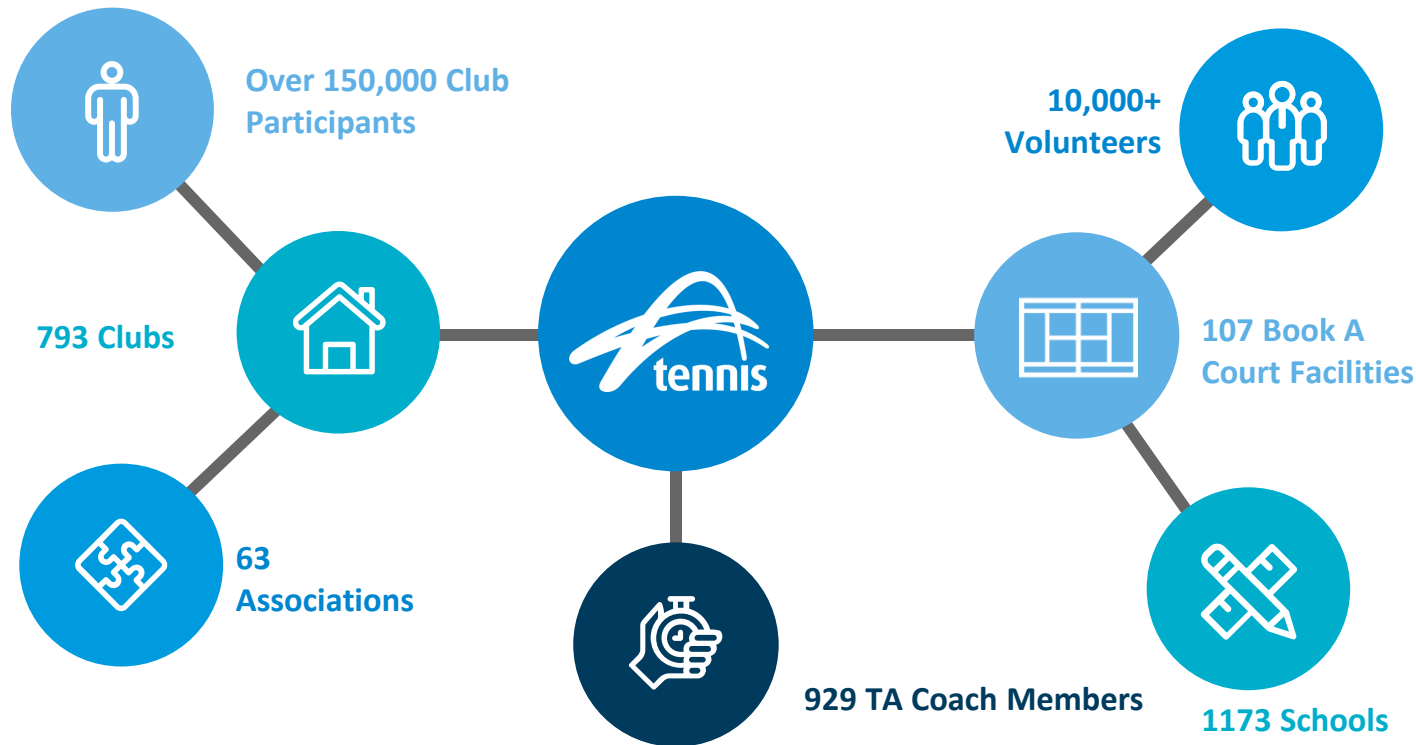
Affiliating with Tennis Victoria (TV) gives you access to a number of key benefits including...





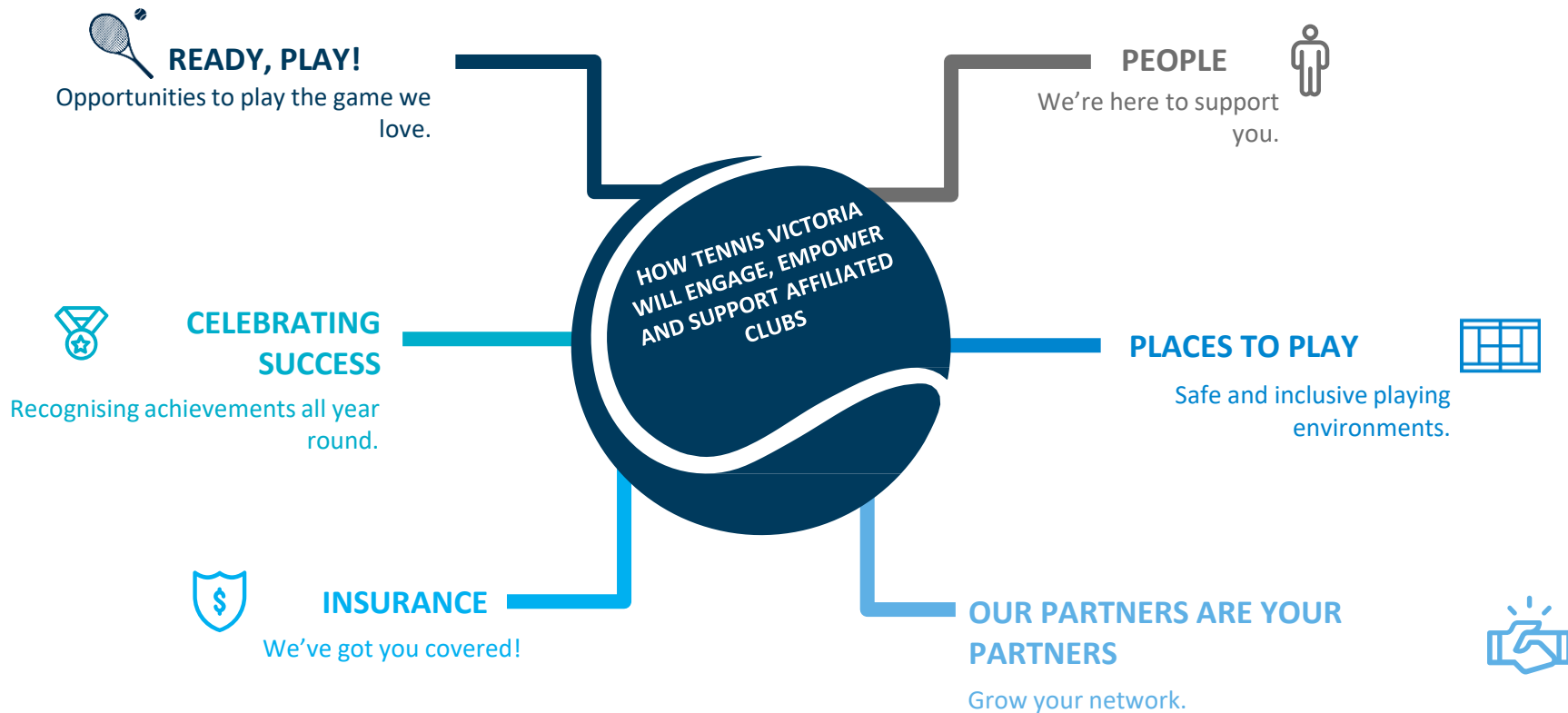
TENNIS VICTORIA, WE'RE HERE TO SERVE

Tennis Victoria is the governing body for tennis in Victoria and is a Member Association of Tennis Australia (TA). Tennis Victoria currently supports...





YOUR AFFILIATION EXPLAINED





Build participation through the
ANZ Tennis Hot Shots Programs:

- Coaching
- Schools
- Community Play
- Match Play



Cardio Tennis – your fitness workout



Tennis 4 Teens – welcome teen players to your club in a social environment



Open Court Sessions – welcome adult players to your club in a social environment



Associations Junior League – for your junior players to represent their Association in team tennis



Tennis Victoria Pennant – Australia's largest inter-club competition



Regional Team Events – representative team opportunities for regional junior players



Sanctioned Australian Ranking Tournaments – opportunities for your players and for your club to host



Junior Talent Recognition Program – Player Support Program and Regional Academy of Sport



ACE Inclusion Grants – funding opportunities supporting Accessible, Community, Equality tennis initiatives



Host Sanctioned Tournaments



Tennis Victoria Premier League – Victoria's highest inter-club teams competition featuring some of Australia's best tennis players



Tennis Victoria Country Week – a week of fun, friendships and tennis as a player or venue host



We have 13 dedicated **Club Development Officers** and five (5) **Regional Tennis Managers** servicing all clubs and associations across Victoria



Our team can support you with our online tennis programs:

- **Clubspark**; membership, club website, event management, court booking
- **My Tennis** membership management software
- **League Manager** competition software
- **Tournament planner** software



Join us to network and learn at our **Victorian Community Tennis Forums**



Collaborate and join our **Metro Association Forums**



Visit **The Clubhouse** and **Bounce** online for resources to support your club



We can support your applications for **grants and funding** for your tennis community



Engage our **School Development Coordinators** and **Coaching Leaders** to drive participation to your club from your local schools



Specialist **governance support** for clubs, coaches and members



We will advocate for and assist you with your **Local Government Authority relations**



Regular **e-newsletters** with up to date information on club resources, funding opportunities, Victorian tennis updates, playing opportunities for your members and success stories



Local Area Marketing resources and guides

PLACES TO PLAY

Safe and inclusive playing environments.



Facility Planning Support and **Facility Funding** opportunities assisting affiliated venues, local councils and schools to create safe and inclusive playing environments



Book A Court – online booking systems and gate access solutions for casual players



Technical support and advice in infrastructure and facility improvements

OUR PARTNERS ARE YOUR PARTNERS

Grow your network.



Affiliation with Tennis Victoria connects you with many of our partners including VicHealth, VicSport, Sport and Recreation Victoria, along with many not for profit agencies to offer **support and advice in being a diverse and inclusive tennis community**



Tennis Victoria partners with **industry experts** to provide a range of **technical services** to clubs and councils.

CELEBRATING SUCCESS

Recognising achievements all year round.

Recognise your club, volunteers, coaches, schools and players through our **Recognition Program** available to affiliates all year round. The Recognition Program is an opportunity to **celebrate the achievements of the Victorian Tennis Community**.



Victorian Tennis Awards – nominate to be recognised among your peers



Volunteers Breakfast



Recognise your long serving volunteers with a **Tennis Service Award**



Celebrate your club milestones with a **Club Anniversary** presentation



LEVEL OF AFFILIATION	CLUBS & CENTRES	ASSOCIATIONS	RESTRICTED ASSOCIATE
AFFILIATION FEE	Based on Metropolitan or Country location, and the number of courts at your venue. See table on page 16.	Based on Metropolitan or Country location, and the number of teams playing in your competition. See table on page 16.	Based on Metropolitan or Country location, and the number of courts at your venue. See table on page 16.
DEFINITION	Incorporated clubs or commercial business structures who either own, hold a lease or license arrangement to a venue.	Associations who do not have their own facility but arrange and manage competitions on behalf of their affiliated clubs. These associations require public liability as well as directors and officers insurance which is included in this category.	This category is only available for unincorporated clubs who Tennis Victoria has entered into an agreement with an overarching body (e.g. unincorporated Catholic Church or Uniting Church clubs).
ACTIVITIES COVERED	All Tennis Victoria registered players** are covered for tennis related activities both on and off site. This includes activities i.e. BBQ's, Fitness & Wellness classes and Open Days.		No insurance cover for the affiliate is possible due to not having an independent legal identity. However any individual players that this affiliate registers** with Tennis Victoria will be covered for tennis activities
PUBLIC & PRODUCTS LIABILITY*	\$30,000,000	\$30,000,000	x
PROFESSIONAL INDEMNITY	✓	✓	x
MANAGEMENT LIABILITY INSURANCE			
Directors & Officers cover	✓	✓	x
Employment Practices cover	✓	✓	x
Tax Audit	✓	✓	x
Office Bearer Fraud	✓	✓	x
VOLUNTEER WORKERS ACCIDENT COVER	✓	✓	x
BUILDING & CONTENTS	x	x	x
PERSONAL ACCIDENTS COVERAGE			
Capital Benefits cover	\$100,000	\$100,000	\$100,000
Non-Medicare Medical Benefits	\$3,000	\$3,000	\$3,000
Loss of Income	\$500 p/w	\$500 p/w	\$500 p/w

*\$1,000 excess

** Tennis Victoria registered players can include Members, Competition players, Coaching students, Casual court hirers and other users of the tennis facility for the primary purpose of playing or supporting Tennis Australia. Tennis Victoria is currently reviewing the processes for registering players and will seek further information and verification from clubs on player eligibility if insurance claims arise.

All queries regarding the insurance cover should be directed to our broker – Marsh Advantage Insurance

Email: sport.australia@marshadvantage.com

Web: www.marshadvantage.com.au/tennisau

Ph: 1300 308 702

This summary of provides an outline of the insurance policy arranged on your behalf. Full terms, conditions, limitations, exclusions, and benefits please visit: www.marshadvantage.com.au/tennisau



POST MATCH IN PROGRESS

COURT 7

JOACHIM GÖRANSSON

GORDON REID

4	2
5	6



TENNIS VICTORIA SAFEGUARDING CHILDREN

Tennis Victoria has a zero tolerance approach to any form of child abuse and is committed to ensuring the sport of tennis is a safe and friendly environment for children and young people. It is imperative that children and young people who access our activities, programs, events or services feel safe and supported.

We will ensure that child safety is embedded in our organisation's culture, reflected in our policies and procedures, and understood and practiced at all levels of our sport. We commit to making sure that everyone involved with delivering tennis in Victoria, from club administrators, volunteers, parents and participants, understand the important responsibilities they have in relation to child safety.

As part of your affiliation renewal you will be requested to provide the Working with Children Check number for each member of your Committee and for your Head Coach, if they are not a Tennis Australia Coach Member (NB: Tennis Australia Coach Members will continue to have their Working with Children Check reviewed by Tennis Australia each year as part of their membership). This enhances our sport's leadership and processes in protecting children, as we work together to strengthen our culture around safeguarding.

Our commitment extends beyond creating an environment that minimises risk or danger. We are committed to building an environment that is both child-safe and child-friendly. Together we can provide an environment in which children feel respected, valued and encouraged to reach their full potential.

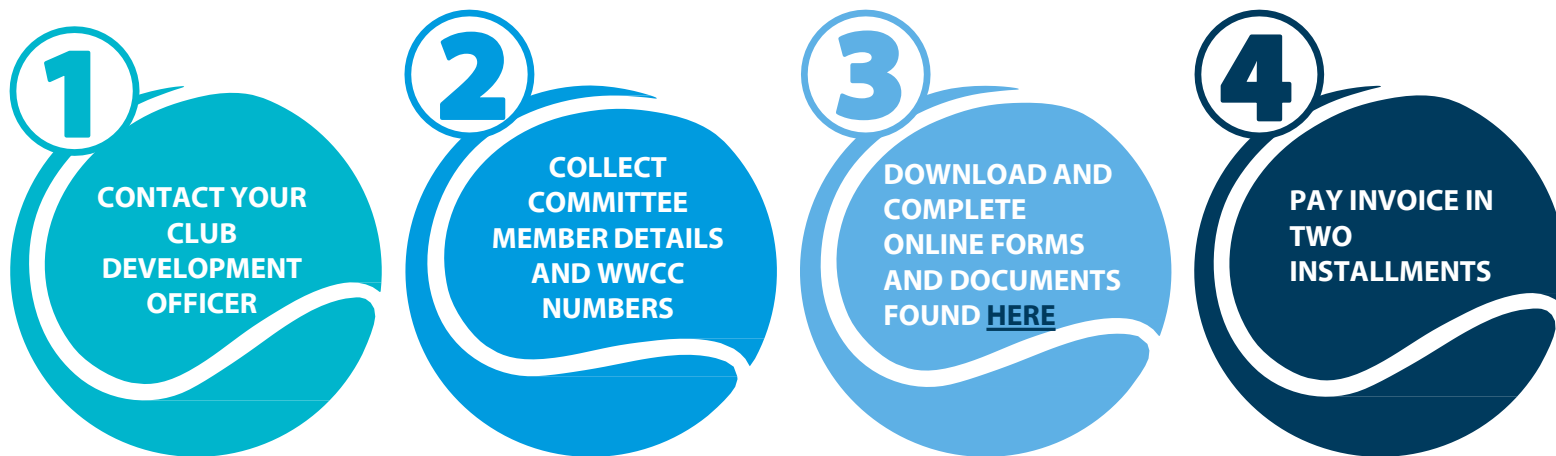
HOW TO AFFILIATE

To provide assistance to our tennis community, affiliation fees have not been increased from last year.

Additionally, payment of **fees will be requested in two instalments**:

- 25% via an invoice you will receive on 1 July; and
- 75% via an invoice you will receive in January 2021.

We are **committed to working in partnership with you** to understand the impact of COVID-19 on your operations, and will be announcing a hardship program during the year. This may reduce the amount you will be required to pay for your second instalment in January 2021.



An updated insurance Certificate of Currency, running to 31 December 2020, will be provided to you once the affiliation form and first installment of the invoice are paid.

2020 – 2021 AFFILIATION FEES

CLUBS, CENTRES AND RESTRICTED ASSOCIATIONS	2020 – 2021 FEE
Country 1-4 Courts	\$605
Country 5-9 Courts	\$915
Country 10-19 Courts	\$1,695
Country 20+ Courts	\$2,755
Metro 1-4 Courts	\$1,035
Metro 5-9 Courts	\$1,670
Metro 10+ Courts	\$4,355
Concession Fee*	\$190

Clubs who can demonstrate revenue received of less than \$1,170 last financial year are eligible to apply for a **Concession Affiliation Fee. Clubs who received the Concession Fee last year will automatically be granted this fee in 2020 -2021.*

ASSOCIATIONS	2020 – 2021 FEE
Small Country (3-29 member clubs)	\$620
Large Country (30+ member clubs)	\$1,225
Small Metro (3-29 member clubs)	\$805
Large Metro (30+ member clubs)	\$1,600

YOUR KEY CONTACTS AT TENNIS VICTORIA

Our team of **14 Club Development Officers**, **four (4) Regional Managers** and **two (2) Coaching Leaders** are split across **four (4) regions in Victoria**. There are **two (2) metropolitan based regions** and **two (2) regions** covering country Victoria.



MEET THE TEAMS

METRO NORTH WEST

Stephanie Eshak

Regional Tennis Manager –
Metro North West
seshak@tennis.com.au

Madeleine Sheedy

Club Development Officer
(Wyndham, Hobsons Bay, Melton,
Brimbank, Hume)
C/O seshak@tennis.com.au

Luca Gallo

Club Development Officer
(Melbourne, Moreland,
Moonee Valley, Yarra, Port
Phillip, Maribyrnong)
lgallo@tennis.com.au

Jarryd Cutler

Club Development Officer
(Whittlesea, Darebin, Banyule,
Nillumbik)
jcutler@tennis.com.au

Kyle McMullan

Club Development Officer
(Stonnington, Boroondara,
Whitehorse)
C/O seshak@tennis.com.au

Helen Owies

School Development
Coordinator
Metro North West
howies@tennis.com.au

METRO EAST

Kelly Smith

Regional Tennis Manager –
Metro Inner
ksmith@tennis.com.au

Nathan Phillips

Club Development Officer
(Kingston, Frankston, Mornington
Peninsula)
nphillips@tennis.com.au

Stephan Mikhail

Club Development Officer
(Knox, Dandenong, Casey,
Cardinia)
smikhail@tennis.com.au

Danielle Cornwall

Club Development Officer
(Manningham, Maroondah,
Yarra Ranges)
dcornwall@tennis.com.au

Jim Lekkas

Club Development Officer (Glen
Eira, Monash, Bayside)
jlekkas@tennis.com.au

Michelle Barry

School Development
Coordinator
Metro East
mbarry@tennis.com.au

MEET THE TEAMS

COUNTRY WEST

Paul Senior
Regional Tennis Manager –
Country West
psenior@tennis.com.au

Peter Bertoncini
Club Development Officer (*Northern
Mallee, Loddon Campaspe*)
peter.bertoncini@tennis.com.au

Cam Govan
Club Development Officer (*South
West, Barwon*)
cam.govan@tennis.com.au

Andrew Cronin
Club Development Officer
(*Central Highlands*)
acronin@tennis.com.au

Kate-Lyn Perkin
Club Development Officer (*Wimmera*)
kperkin@tennis.com.au

Sarah Green
School Development Coordinator
Country West
C/O_psenior@tennis.com.au

COUNTRY EAST

Justin Raiti
Regional Tennis Manager –
Country East
justin.raiti@tennis.com.au

Jade Ellams
Club Development Officer
(*Central Gippsland, East
Gippsland*)
jade.ellams@tennis.com.au

Sam Condon
Club Development Officer
(*Goulburn, North East*)
scondon@tennis.com.au

Alastair Doherty
School Development
Coordinator
Country East
adoherty@tennis.com.au

COACHING LEADERS

Paul Aitken
Senior Coaching Leader –
Metro West & Country West
paitken@tennis.com.au

Jon Watson
Coaching Leader – Metro East &
Country East
jon.watson@tennis.com.au

Emily Martin
Coach Development
Coordinator
emartin@tennis.com.au

