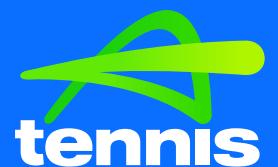


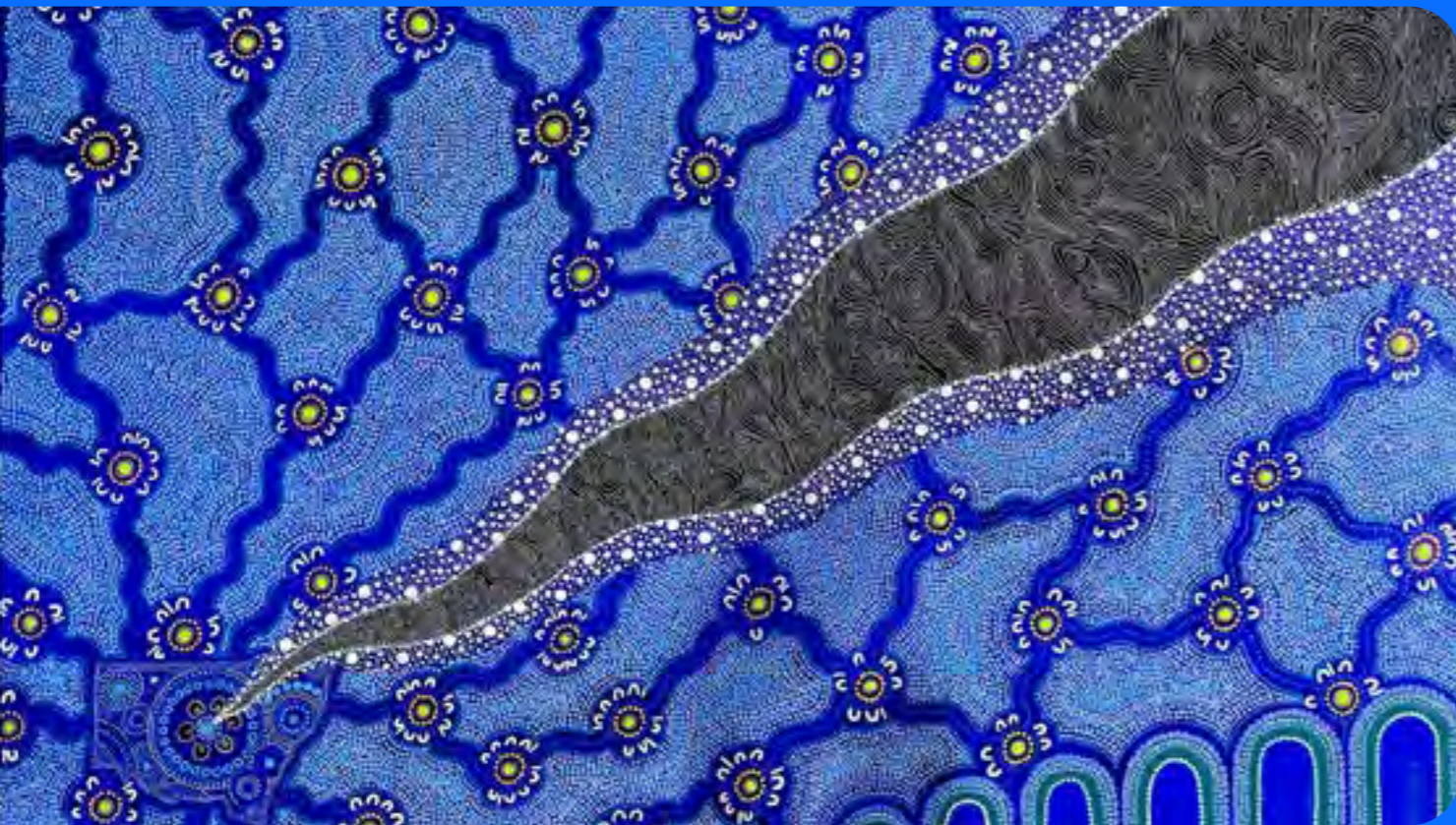


2024 Tennis NSW

Competitive Play Calendar

tournaments.tennis.com.au





Acknowledgment of Country

Tennis NSW pays respect to the First Nations people of this land who are part of the world's longest living culture. We acknowledge their contribution and deep spiritual connection to this land we call home – Australia. We also acknowledge the impactful contribution that Aboriginal and Torres Strait Islander people have made and continue to make to the game of Tennis.

Thank you

Tennis NSW would like to thank the work our volunteers and staff have done to build the 2024 Competitive Play Calendar.

The calendar build has been a three-month process in which Tennis NSW has worked with our members in addition to consulting and collaborating with Tennis Australia, and the two sub committees of the Tennis NSW Board, Metro Sydney and Tennis Country.

It is through this thorough and transparent process we can release the 2024 Calendar.

Tennis NSW would like to thank all our Members for their contribution to Competitive Play in NSW and for providing so many opportunities for our players.

Contents

Recommended Levels of Play	4
Junior Opportunities	7
Metro Leagues.....	11
NSW Teams Events.....	12
NSW Series Events	13
Tennis Australia Progress Tour	14
Metro Sydney Coloured Ball Series	16
Super 10's Events	17
Diversity & Inclusion Events.....	18
Tennis Seniors Calendar.....	19
Regional Matchplay Series	20
12 and under NSW National Player Schedule.....	26
ITF Junior Events	27
Player Development Pathway.....	28
Tennis NSW Contacts	34

*Dates and locations are subject to change.

*Please continue to check the [tournaments.tennis.com.au](https://www.tennis.com.au) website for changes and how to enter.

Recommended Levels of Play

Each stage of the pathway provides players with a recommended Universal Tennis Rating to use as a guide when entering tournaments.

Below is an outline of the Competitive Player Pathway from Junior Community events through to Junior International Events, and from Open Community Events through the Open International level events.

Junior Community

Regional Matchplay Series
Metro Sydney Coloured Ball Series

Junior Series

Junior 125
Junior 250 Premier Tournaments
Junior 500 Signature Tournaments
Junior 1000 Australian Nationals

International Junior Events

(Age restrictions, player must be 13 years to compete on the ITF junior tour. Players also require an ipin to enter events through the ITF website).

ITF Junior J30
ITF Junior J60
ITF Junior J100
ITF Junior J200
ITF Junior B200 (Closed Oceania Event)
ITF Junior J300
ITF Junior Grand Slam

Open Pathway

Open Community & Tennis Country Series
Open 3K & Roche Series
Progress Tour Premier \$10,000 & Signature \$20,000

International

ITF WTT
ATP Tour
WTA Tour



Recommended rating per age group for each level of play.

	LOCAL Exploring		REGIONAL Emerging J125 Open Community		STATE Developing J250 & J500 O3k		NATIONAL Specialising J1000 Progress Tour		INTERNATIONAL Excelling ITF/ATP/WTA	
AGE	RATING									
12s	1.5+	2.5+	2.5+	4.5+	4.5+	7+	5.5+	7.5+	9+	10+
14s	3+	4.5+	4.5+	6+	6.5+	7.5+	7.5+	8.5+	10+	11+
16s	4+	5.5+	5.5+	7+	7.5+	9+	8.5+	10+	11+	12+
18s	5+	6.5+	6.5+	8+	8.5+	10+	9+	11+	12+	13+
OPEN					9+	11+	10+	12+	12+	14+

*Boys are shaded blue and girls are shaded green.

*This is only a guide for players wanting to enter tournaments.



NSW & ACT Signature 500 & Premier 250 Tournaments

Tennis NSW in collaboration with Tennis ACT have worked together to provide players with a multitude of opportunities to compete for Junior Series Year End Masters Points.

Premier 250 and Signature 500 events are scheduled to support the best players we have in the state as they look to qualify for the National Championships and the year end Australian and NSW/ACT Masters.

* Denotes that they may run a J125 in addition to the Premier 250.

Date	Event	Event	Location	Surface
2-6 January	1000	Grass Court Nationals	Mildura	Grass
5-10 January	250 *	Margaret Court Cup	Albury	Grass
15-18 January	250 *	ACT Premier	Canberra	Hard/Clay
18-22 January	250 *	Gosford	Gosford	Hard
16-17 March	Qualifying	12's Clay Court Nationals	Macquarie Uni	Clay
23-24 March	Qualifying	14's Clay Court Nationals	Macquarie Uni	Clay
27 March - 1 April	250 *	Nepean Easter	Nepean	Hard
11-15 April	500	ACT Signature	Canberra	Clay
16-21 April	1000	Clay Court Nationals	Canberra	Clay
16-19 April	250 *	Sawtell	Sawtell	Clay
20-24 April	250	NSW Age	SOPTC	Hard
25-28 April	250	Rafa Series	SOPTC	Hard
7-10 June	250 *	Wollongong	Wollongong	Synthetic
17-20 July	250	Tamworth	Tamworth	Hard
14-15 September	Qualifying	Hardcourt Qualifying	Gosford	Hard
2-7 October	1000	Hardcourt Nationals	Adelaide	Hard
4-7 October	250	ACT Rafa	Canberra	Hard/Clay
8-12 October	500	NSW State Championships	SOPTC	Hard
4-9 November	Masters	Australian Masters		Hard
13-17 December	Masters	NSW/ACT Masters		Hard
30 Nov – 1 Dec	Qualifying	Grass Court Qualifying		

NSW Junior 125 Tournaments

Listed below are the Junior 125 tournaments designed for the passionate junior wanting to compete and improve their tennis.

Starting at the Junior 125 level, players improving their level can look to enter the Premier 250 or Signature 500 events.

Date	Event	Location	Surface
4-7 January	Ballina	North East	Synthetic
5-8 January	Newcastle	Northumberland	Synthetic
11-15 January	Illawarra	Metro Sydney	Synthetic
11-15 January	Nepean	Central West	Hard
19-22 January	Tweed	North East	Hard
20-23 January	Macarthur	Metro Sydney	Synthetic
25-28 January	Parramatta	Metro Sydney	Synthetic
17-19 February	Grafton	North East	Hard
29 March - 1 April	Coffs Harbour	North East	Synthetic
29 March - 1 April	Albury	South West	Grass
5-8 April	Bathurst	Central West	Synthetic
6-9 April	Tweed	North East	Hard
12-15 April	Shoalhaven	South East	Synthetic
12-15 April	Newcastle	Northumberland	Synthetic
16-19 April	Blacktown	Metro Sydney	Synthetic
16-19 April	Albury	South West	Grass
20-23 April	Parramatta	Metro Sydney	Synthetic
25-28 April	Illawarra	Metro Sydney	Synthetic
26-28 April	Batemans Bay	South East	Synthetic
7-10 June	Twin Towns	North East	Synthetic
7-10 June	Griffith	South West	Clay
7-10 June	Springwood	Central West	Synthetic

Date	Event	Location	Surface
8-12 July	Country Championships	North East	Synthetic
9-12 July	Metro Sydney Junior	Metro Sydney	Hard
13-16 July	Wollongong	South East	Synthetic
13-15 July	Newcastle	Northumberland	Synthetic
18-21 July	Macarthur	Metro Sydney	Synthetic
18-21 July	Blacktown	Metro Sydney	Synthetic
3-5 August	Sawtell	North East	Clay
21-23 September	Parkes	Central West	Synthetic
21-23 September	Lake Macquarie	Northumberland	Synthetic
27-30 September	Springwood	Central West	Synthetic
27-30 September	Port Stephens	North East	Synthetic
1-3 October	Nepean	Central West	Hard
1-3 October	Gosford	Northumberland	Hard
4-7 October	Bathurst	Central West	Synthetic
4-7 October	Forster	North East	Synthetic
5-7 October	Tweed	North East	Hard
9-12 October	Parramatta	Metro Sydney	Synthetic
9-12 October	Newcastle	Northumberland	Synthetic
9-11 November	Mullumbimby	North East	Synthetic
29 Nov - 2 Dec	Macquarie Uni	Metro Sydney	Hard/Clay
7-9 December	Coffs Harbour	North East	Synthetic
13-15 December	Bathurst	Central West	Synthetic
20-23 December	Gosford	Northumberland	Hard
21-23 December	Macarthur	Metro Sydney	Synthetic
21-23 December	Wollongong	South East	Synthetic
27-31 December	Illawarra	Metro Sydney	Synthetic
27-30 December	Newcastle	Northumberland	Synthetic



Metro Leagues



Sydney Junior Team Tennis

Join your local club to compete in your local association.

- Tennis Northern Beaches
- Northern Suburbs Tennis Association
- Eastern Suburbs Tennis Association



Interdistrict

Term 3, 2024

Tennis NSW supports Hardcourt in the delivery of Interdistrict. Registrations are made through your local association. This State Level team tennis offering is held in Term 3 each year for the past 100 years.



Badge

Badge is the most prestigious tennis competition in Sydney. Badge is a doubles only competition which caters for a wide variety of players, from the social player to aspiring juniors.

Badge offers three categories:

- Thursday Ladies
- Saturday Ladies
- Saturday Mens



Premier League

Term 4, 2024

Premier League is open to all Tennis NSW clubs to enter their team in. Players compete in both singles and doubles. The top 6 teams for the men and top 6 teams for the women are selected to compete for \$45,000 prizemoney.

NSW Teams Events

Tennis NSW State Teams - Invitation Only

Date	Event	Location	Surface
23-24 March	12's State Teams Event	Bathurst	Synthetic
18-19 May	14's State Teams Event	Gosford	Hard
19-20 October	10's State Teams Event	Newcastle	Synthetic

Regional State League – Invitation Only

In Term 1 and Term 2 each region of Tennis Country come together to compete for the Southern Conference and Northern Conference. In Term 3 all regions come together to compete in the Regional State League Finals.

Date	Event	Location	Surface
2-3 March	Southern Regional State League		Synthetic
2-3 March	Northern Regional State League		Synthetic
22-23 June	Southern Regional State League		Synthetic
22-23 June	Northern Regional State League		Synthetic
7-8 September	Regional State League Finals		Synthetic

Tennis Country Teams Events – Invitation Only

Date	Event	Location	Surface
16-17 November	Wendy Saville Shield		
16-17 November	Jack Crawford Cup		

Metro Sydney vs Tennis Country – Invitation Only

Date	Event	Location	Surface
29-30 December	City vs Country	SOPTC	Hard

NSW Series Events

Roche Series

Date	Event	Location	Surface
5-10 January	Margaret Court Cup	Albury	Grass
18-22 January	Gosford Roche	Gosford	Hard
27 March 1 April	Nepean Easter	Nepean	Hard
12-15 April	Shoalhaven Roche	Shoalhaven	Synthetic
25-28 April	Illawarra	Illawarra	Synthetic
7-10 June	Twin Towns	Twin Towns	Synthetic
17-20 July	Tamworth Roche	Tamworth	Hard
9-12 October	Parramatta Roche	Parramatta	Synthetic
January 2025	Roche Series Finals	SOPTC	Hard

Tennis Country Series

Date	Event	Location	Surface
3-4 February	TCS Northumberland	Gosford	Hard
24-25 February	TCS Central West	Nepean	Hard/Syn
2-3 March	TCS Central West	Bathurst	Synthetic
23-24 March	TCS South East	Shoalhaven	Synthetic
27-28 April	TCS North East	Sawtell	Clay
22-23 June	TCS South East	Ulladulla	Synthetic
10-11 August	TCS Northumberland	Newcastle	Synthetic
24-25 August	TCS North West	Tamworth	Hard/Syn
7-8 September	TCS South West	Goulburn	Synthetic
26-27 October	TCS South East	Wollongong	Synthetic
30 Nov - 1 Dec		TBC	

Tennis Australia Progress Tour

Tennis Australia Progress Tour

Signature \$20,000 and Premier \$10,000 Open events.

Date	Event	Location	Surface
31 Dec – 7 Jan	Devonport Signature \$20,000	Tasmania	Hard
TBC	Victorian Signature \$20,000	Victoria	TBC
4 - 8 March	Shepparton Signature \$20,000	Victoria	Grass
29 Mar – 1 Apr	Toowoomba Premier \$10,000	Queensland	Synthetic
22-25 April	Rye Premier \$10,000	Victoria	Clay
29 Apr – 2 May	Waverly Premier \$10,000	Victoria	Clay
13-16 May	SA Premier \$10,000	South Australia	Hard
20-23 May	Darwin Premier \$10,000	Northern Territory	Hard
1-5 June	Tamworth Premier \$10,000	North West NSW	Hard
12-16 June	Tweed Premier \$10,000	North East NSW	Hard
17-20 June	Gold Coast Premier \$10,000	Queensland	Hard
24-28 June	Queensland Open Signature \$20,000	Queensland	Hard
29 Jul -3 Aug	Gosford Premier \$10,000	Northumberland NSW	Hard
19-23 August	Nepean Premier \$10,000	Central West NSW	Hard
2-6 September	NT Signature \$20,000 (Men)	Northern Territory	Hard
2-6 September	WA Open \$20,000 (Ladies)	Western Australia	Hard
TBC	SA Signature \$20,000	South Australia	Hard
4-8 November	NSW Signature \$20,000	Metro Sydney NSW	Hard
11-15 December	Griffith University Premier \$10,000	Queensland	Hard
18-22 December	North Shore Open Premier \$10,000	Metro Sydney NSW	Synthetic
26-30 December	Manly Seaside Premier \$10,000	Metro Sydney NSW	Synthetic



Metro Sydney Coloured Ball Series

Tennis NSW in collaboration with Metro Sydney are launching the 2024 Coloured Ball Series. These one-day events are targeted for players wanting to grow their passion of competitive tennis.

This series provides tournaments for Orange ball and green ball players and matches will contribute to the players Coloured Ball Rating.

These events are held on the first Sunday of the school term at various associations/venues around Metro Sydney. The series will have a series ending masters to be held for the best of the best players of the series.

Entry is through the tournaments.tennis.com.au website and players must have a Competitive Player Profile to enter.

Any questions contact Adam O'Shannessy
adam.oshannessy@tennis.com.au

Date	Event	Location	Surface
4th February	Term 1 Event		Synthetic
5th May	Term 2 Event		Synthetic
28th July	Term 3 Event		Synthetic
20th October	Term 4 Event		Synthetic
14th -15th December	Coloured Ball Masters	Parramatta	Synthetic

Super 10's Events

Tennis NSW works in collaboration with Tennis Australia and the National Development Squad to support their delivery of the Super 10's program.

There are two trials held each year with 4 terms of team competition.

For any enquiries regarding Super 10's and the State of Origin events contact Greg Royle.
Greg.royle@tennis.com.au

Date	Event	Location	Surface
10 February	Super 10's Trial	Parramatta	Synthetic
24 February	Super 10's Competition	Parramatta	Synthetic
2 March	Super 10's Competition	Parramatta	Synthetic
9 March	Super 10's Competition	Parramatta	Synthetic
24 March	NSW vs ACT State of Origin	Canberra	Clay/Hard
11 May	Super 10's Competition	Parramatta	Synthetic
18 May	Super 10's Competition	Parramatta	Synthetic
25 May	Super 10's Competition	Parramatta	Synthetic
29-30 June	NSW vs QLD State of Origin	Sawtell	Clay
3 August	Super 10's Trial	Parramatta	Synthetic
17 August	Super 10's Competition	Parramatta	Synthetic
24 August	Super 10's Competition	Parramatta	Synthetic
31 August	Super 10's Competition	Parramatta	Synthetic
15 September	NSW vs ACT State of Origin	Canberra	Clay/Hard
26 October	Super 10's Competition	Parramatta	Synthetic
2 November	Super 10's Competition	Parramatta	Synthetic
9 November	Super 10's Competition	Parramatta	Synthetic
16-17 November	NSW vs VIC State of Origin	Wodonga	Grass



Diversity & Inclusion Events

Tennis NSW provides state championships for all players.

This includes ITF Wheelchair events, PWII NSW Open, Blind & Low Vision NSW Open and Tennis Sydney Pride events.

Date	Event	Location
21st-23rd June (TBC)	PWII NSW Open	Cintra Park
21st-23rd June (TBC)	DHoH NSW Open	Cintra Park
8th-9th June	Blind & Low Vision NSW Open	SOP Sports Halls
20th-22nd Sept	ITF Wheelchair NSW Open	City Community Tennis
TBC	NSW Indigenous Camp	

Tennis Sydney (Pride)		
Date	Event	Location
March	Tennis Sydney Open	TBC
May	Hardcourt Singles	TBC
June	Compass Doubles	TBC
August	Compass Doubles	TBC
October	Tennis Sydney Spring Classic	TBC
November	Slay the Clay Canberra Classic	TBC



Tennis Seniors Calendar

Tennis NSW works collaboratively with Tennis Seniors to endorse and promote the Tennis Seniors NSW Calendar. Any questions in relation to Tennis Seniors events please contact Tennis Seniors Secretary Di Cassel via play@tsnsw.com.au

Date	Event	Location	Contact
16-18 Feb	Ulladulla Summer Games	Milton Ulladulla TC	Mary Lou Barclay
23-25 Feb	Armidale R/Robin	Armidale	Charles Hempel
1-3 Mar	Albury R/Robin	Albury TA	Dom Mahaffey
2-3 Mar	Walcha R/Robin	Walcha Assoc.	Roxana Mathews
8-10 Mar	Narooma R/Robin	Narooma TC	Craig Junor
15-17 Mar	Goulburn R/Robin	Goulburn TC	Corey Greenwood
23-24 Mar	Central Coast R/Robin	Wyong	Leoni Baldwin
5-7 Apr	Inverell NRT 7	Inverell TC	Matthew Butler
13-14 April	Tennis Macarthur NRT 6	Tennis Macarthur	Michael Jackson
26-28 Apr	Gloucester NRT 6	Gloucester TC	Ruth Johnson
3-5 May	Picton Seniors NRT 6	Picton TC	Michael Jackson
4-5 May	West Port Macquarie R/Robin	West Port	Greg McIntosh
18-19 May	Howe Park, Singleton R/Robin	Howe Park	Heidi Stanford
25-26 May	West Tamworth Seniors R/Robin	West Tamworth TC	Brian Brooking
8-10 Jun	Robyn Castle Mixed Teams - Gosford	Gosford	Rod Clarkin
15-16 Jun	Lake Macquarie NRT 7	Lake Macquarie TC	Keith Williams?
21-24 Jun	Tweed Heads, ITF MT200	Tweed	Natasha Kersten
22-23 Jun	Cowra R/Robin	Cowra TC	Cindy Fuhlbohm
2-5 Aug	Forster Seniors NRT 5	Forster TC	Brian Adams
17-18 Aug	Batemans Bay R/Robin	Batemans Bay TC	Mario Kefalas
14-15 Sep	Orange Ex-Services R/Robin	Orand Ex-Services	Chrissie Kjoller
21-22 Sep	Tri State, Barham	Barham	Graeme Sticka
27-30 Sep	State Championships MT700 - Sydney	??	Arthur Olsen
10-13 Oct	Merimbula Annual NRT 6	Merimbula TC	John Rheinberger
12-13 Oct	Gosford R/Robin	Gosford TC	Chris Lees
25-27 Oct	East Port Macquarie R/Robin	Port Macquarie TC	Mark Giumelli
1-3 Nov	Pennant Hills NRT 6	Pennant Hills	Michael Jackson
2-3 Nov	Myall Park - Hawks Nest R/Robin	Myall Park TC	Samantha Leggatt
8-10 Nov	Kiama Vets & Legends R/Robin	Kiama TC	David Lehman
29 Nov - 1 Dec	Nelson Bay NRT 5	Nelsons Bay TC	Steve Taylor



South East Regional Matchplay Series

The Regional Matchplay Series (RMS) events are round robin singles events. The series is aimed at providing competitive match play opportunities for aspiring tennis players in the region during the school terms. Matches played will count toward a player's verified UTR.

Players must have a Tennis Australia Tournament ID number to enter. This number is an eleven-digit number starting with 66. To obtain your Tournament ID number, please contact the Tennis Australia Customer Support team during business hours on 1800 PLAY TENNIS (1800 752 983) or email play@tennis.com.au

All enquiries related to the administration of RMS Events are to be directed to the Regional Pathway Coordinator for the region.

Date	Event	Surface
11 February	Kiama Shellharbour Tennis Association	Synthetic
18 February	Shoalhaven District Tennis Club	Synthetic
24 February	Merimbula	Synthetic
25 February	Bega	Synthetic
9 March	Bowral	Hard/Syn
10 March	Moss Vale	Synthetic
17 March	Picton	Synthetic
5 May	Milton Ulladulla Tennis Club	Synthetic
12 May	South Camden	Synthetic
26 May	Shoalhaven District Tennis Club	Synthetic
1 June	Moruya	Synthetic
2 June	Narooma	Synthetic
30 June	Tennis Wollongong Association	Hard/Syn
3 August	Moruya	Synthetic
4 August	Batemans Bay	Synthetic
18 August	Picton	Synthetic
25 August	Bulli Tennis Club	Synthetic
1 September	Wollongong Tennis Club Complete Tennis	Hard/Syn
14-15 September	Regional Champion of Champions	Synthetic
22-24 November	NSW Champion of Champions	TBC



South West Regional Matchplay Series

The Regional Matchplay Series (RMS) events are round robin singles events. The series is aimed at providing competitive match play opportunities for aspiring tennis players in the region during the school terms. Matches played will count toward a player's verified UTR.

Players must have a Tennis Australia Tournament ID number to enter. This number is an eleven-digit number starting with 66. To obtain your Tournament ID number, please contact the Tennis Australia Customer Support team during business hours on 1800 PLAY TENNIS (1800 752 983) or email play@tennis.com.au

All enquiries related to the administration of RMS Events are to be directed to the Regional Pathway Coordinator for the region.

Date	Event	Surface
11 February	South Wagga	Synthetic
18 February	Goulburn Tennis Club	Synthetic
25 February	Albury Tennis Club	Grass/Syn
10 March	Deniliquin	Grass/Syn
17 March	Thurgoona Tennis Club	Synthetic
5 May	Young Tennis Club	Synthetic
12 May	Henty Tennis Club	Synthetic
26 May	Hay Tennis Club	Synthetic
2 June	Griffith Tennis Club	Clay/Syn
16 June	Goulburn Tennis Club	Synthetic
30 June	South Wagga	Synthetic
4 August	West Wyalong	Synthetic
18 August	St Pat's Albury	Hard/Syn
25 August	Temora Tennis Club	Synthetic
1 September	Albury Tennis Club	Grass/Syn
14-15 September	Regional Champion of Champions	TBC
22-24 November	NSW Champion of Champions	TBC



Central West Regional Matchplay Series

The Regional Matchplay Series (RMS) events are round robin singles events. The series is aimed at providing competitive match play opportunities for aspiring tennis players in the region during the school terms. Matches played will count toward a player's verified UTR.

Players must have a Tennis Australia Tournament ID number to enter. This number is an eleven-digit number starting with 66. To obtain your Tournament ID number, please contact the Tennis Australia Customer Support team during business hours on 1800 PLAY TENNIS (1800 752 983) or email play@tennis.com.au

All enquiries related to the administration of RMS Events are to be directed to the Regional Pathway Coordinator for the region.

Date	Event	Surface
11 February	Springwood	Synthetic
18 February	Parkes	Synthetic
25 February	Bathurst	Synthetic
10 March	Orange Ex-Services Club	Synthetic
17 March	Nepean	Hard/Syn
17 March	Tottenham	Synthetic
5 May	Blayney	Synthetic
12 May	Nepean #2	Hard/Syn
26 May	Springwood	Synthetic
2 June	Forbes	Synthetic
16 June	Lithgow	Synthetic
4 August	Dubbo	Synthetic
18 August	Cowra	Synthetic
25 August	Parkes	Synthetic
15 September	Bathurst	Synthetic
26-27 October	Regional Champion of Champions	TBC
22-24 November	NSW Champion of Champions	TBC



Northumberland Regional Matchplay Series

The Regional Matchplay Series (RMS) events are round robin singles events. The series is aimed at providing competitive match play opportunities for aspiring tennis players in the region during the school terms. Matches played will count toward a player's verified UTR.

Players must have a Tennis Australia Tournament ID number to enter. This number is an eleven-digit number starting with 66. To obtain your Tournament ID number, please contact the Tennis Australia Customer Support team during business hours on 1800 PLAY TENNIS (1800 752 983) or email play@tennis.com.au

All enquiries related to the administration of RMS Events are to be directed to the Regional Pathway Coordinator for the region.

Date	Event	Surface
11 February	Newcastle #1	Synthetic
18 February	Gosford #1	Syn/Hard
25 February	Nelson Bay #1	Synthetic
10 March	Lake Macquarie #1	Synthetic
17 March	Raymond Terrace	Syn/Hard
5 May	Singleton	Grass/Syn
12 May	Wyong #1	Synthetic
26 May	Lake Macquarie #2	Synthetic
2 June	Newcastle #2	Synthetic
16 June	Nelson Bay #2	Synthetic
30 June	Gosford #2	Syn/Hard
4 August	East Maitland	Synthetic
18 August	Gosford #3	Syn/Hard
25 August	Wash out	TBC
1 September	Newcastle #3	Synthetic
15 September	Wyong #2	Synthetic
15 September	Scone	Synthetic
27 October	Newcastle (Champion of Champions)	Synthetic
22-24 November	NSW Champion of Champions	TBC



North East Regional Matchplay Series

The Regional Matchplay Series (RMS) events are round robin singles events. The series is aimed at providing competitive match play opportunities for aspiring tennis players in the region during the school terms. Matches played will count toward a player's verified UTR.

Players must have a Tennis Australia Tournament ID number to enter. This number is an eleven-digit number starting with 66. To obtain your Tournament ID number, please contact the Tennis Australia Customer Support team during business hours on 1800 PLAY TENNIS (1800 752 983) or email play@tennis.com.au

All enquiries related to the administration of RMS Events are to be directed to the Regional Pathway Coordinator for the region.

Date	Event	Surface
25 February	Port Macquarie #1 (Lower)	Synthetic
25 February	Lismore #1 (Upper)	Synthetic
10 March	Sawtell #1 (Lower)	Clay/Syn
10 March	Grafton #1 (Upper)	Hard/Syn
17 March	Port Macquarie #2 (Lower)	Grass/Hard
17 March	Ballina #1 (Upper)	Synthetic
5 May	Forster #1 (Lower)	Syn/Clay/Hard
5 May	Tweed Heads #1 (Upper)	Hard/Syn
26 May	Sawtell #2 (Lower)	Clay/Syn
26 May	Lismore #2 (Upper)	Synthetic
16 June	Sawtell (combined)	Clay/Syn
30 June	Port Macquarie #3 (Lower)	Synthetic
30 June	Ballina #2 (Upper)	Synthetic
18 August	Forster #2 (Lower)	Syn/Clay/Hard
18 August	Grafton #2 (Upper)	Hard/Syn
25 August	Sawtell #3 (Lower)	Clay/Syn
25 August	Tweed Heads #2 (Upper)	Hard/Syn
14-15 September	Grafton (Champion of Champions)	Hard/Syn
26-27 October	Inverell (Northern Foundation Champion of Champions)	Clay/Syn
22-24 November	NSW Champion of Champions	TBC



North West Regional Matchplay Series

The Regional Matchplay Series (RMS) events are round robin singles events. The series is aimed at providing competitive match play opportunities for aspiring tennis players in the region during the school terms. Matches played will count toward a player's verified UTR.

Players must have a Tennis Australia Tournament ID number to enter. This number is an eleven-digit number starting with 66. To obtain your Tournament ID number, please contact the Tennis Australia Customer Support team during business hours on 1800 PLAY TENNIS (1800 752 983) or email play@tennis.com.au

All enquiries related to the administration of RMS Events are to be directed to the Regional Pathway Coordinator for the region.

Date	Event	Surface
11 February	Armidale	Hard/Clay
25 February	Gunnedah #1	Synthetic
17 March	West Tamworth	Hard/Syn
5 May	Narrabri #1	Clay/Syn
12 May	Tamworth #1	
16 June	Gunnedah #2	Synthetic
30 June	Inverell	Clay/Syn
4 August	Tamworth #2	Hard/Syn
18 August	Narrabri #2	Clay/Syn
1 September	Moree	Synthetic
15 September	(Champion of Champions) TBA	TBC
26-27 October	Inverell (Northern Foundation Champion of Champions)	Clay/Syn
22-24 November	NSW Champion of Champions	TBC

12 under NSW National Player Schedule

ITF Junior Events

NSW provides players with numerous opportunities to compete at the State level to earn points to qualify for the Australian Masters and the NSW/ACT Masters.

Provided is a list of the highest level junior events in New South Wales and the ACT. To complete a players schedule they may wish to play in the J125 events in addition to SJTT, Interdistrict, RMS or NSW State Teams events.

Date	Event	Event	Location	Surface
2-6 January	1000	Grass Court Nationals	Mildura	Grass
5-10 January	250	Margaret Court Cup	Albury	Grass
15-18 January	250	ACT Premier	Canberra	Hard/Clay
18-22 January	250	Gosford	Gosford	Hard
16-17 March	Qualifying	12's Clay Court Nationals	Macquarie Uni	Clay
23-24 March	Teams	12's Teams Event	Bathurst	Synthetic
23-24 March	Qualifying	14's Clay Court Nationals	Macquarie Uni	Clay
27 March 1 April	250	Nepean Easter	Nepean	Hard
11-15 April	500	ACT Signature	Canberra	Clay
16-21 April	1000	Clay Court Nationals	Canberra	Clay
16-19 April	250	Sawtell	Sawtell	Clay
20-24 April	250	NSW Age	SOPTC	Hard
25-28 April	250	Rafa Series	SOPTC	Hard
7-10 June	250	Wollongong	Wollongong	Synthetic
21-25 June	Teams	11's & 13's National Teams	Gold Coast	Hard
17-20 July	250	Tamworth	Tamworth	Hard
14-15 September	Qualifying	Hardcourt Qualifying	Gosford	Hard
2-7 October	1000	Hardcourt Nationals	Adelaide	Hard
4-7 October	250	ACT Rafa	Canberra	Hard/Clay
8-12 October	500	NSW State Championships	SOPTC	Hard
4-9 November	Masters	Australian Masters		Hard
13-17 December	Masters	NSW/ACT Masters		Hard
30 Nov – 1 Dec	Qualifying	Grass Court Qualifying		

Tennis Australia provides Australian juniors with 16 international junior events. Covering across each level of the tour, players have the opportunity to begin their journey in the J30 tournaments, or compete on the biggest stage at the Australian Open.

Players must be a minimum of 13 years of age to compete and have registered with the ITF to claim their ipin.

Date	Event	Location	Surface
11-19 January	J300	Traralgon	Hard
20-27 January	JA Australian Open Juniors	Melbourne	Hard
29 Jan – 4 Feb	J100	Tasmania	Hard
5-11 February	J100	Tasmania	Hard
16-21 March	J100	Victoria	Clay
23-30 March	J100	ACT	Clay
27 May- 2 June	J60	Darwin	Hard
3 -9 June	J30	Darwin	Hard
1-7 July	J60	Gold Coast	Hard
8-14 July	J60	Gold Coast	Hard
5-11 August	B200	Sydney	Hard
12-18 August	J200	Sydney	Hard
2-8 September	J30	Adelaide	Hard
9-15 September	J30	Adelaide	Hard
11-17 November	J30	Perth	Hard
18-24 November	J30	Perth	Hard

Tennis NSW Player Development Pathway

Tennis NSW in collaboration with Sydney Junior Team Tennis Hosts provides players with quality squad training close to home. In 2023 Northern Suburbs Tennis Association, Tennis Northern Beaches and Greater West all held SJTT Zone Squads.

In 2024 we are looking to partner with Eastern Suburbs Tennis Association and additional member to provide this offering across Metro Sydney.

Uniting both the Metro Sydney and Tennis Country Player Development Pathway, Tennis NSW hosts the Bluewall Camp where players are selected from their Tennis Country Region or their SJTT Zone Squad to train with their peers from across the state.

For more information on the Metro Sydney Player Pathway:

<https://www.tennis.com.au/nsw/files/2022/10/Metro-Sydney-Player-Development-Pathway.pdf>

For more information on the Tennis Country Player Pathway:

<https://www.tennis.com.au/nsw/files/2022/08/Regional-Player-Development-Pathways-Program-1.pdf>

Date	Event	Location	Surface
3- 4 February	Term 1 Bluewall Camp	SOPTC	Hard
10 -11 August	Term 3 Bluewall Camp	SOPTC	Hard

*Bluewall Camp is by invitation only



TENNIS NSW 2024

Metro Sydney Development Pathway



SJTT Zone Squad

Players in this squad should be regularly playing:

SJTT, Interdistrict, Signature and Premier Series Events, State and Region Level Players.

Bluewall Camp

Minimum 2 players invited from each SJTT Zone Squad.

Players in this squad should be regularly playing:

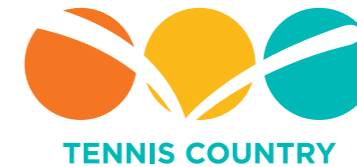
State Signature and Premier tournaments, Junior ITF events & Tennis Country Series, Roche Series.

National Development Squad

6 Players invited per age group

Players in this squad should be regularly playing:

State Signature and Premier events, Junior ITF events, Tennis Country Series & Roche Series.



Regional Open Development Day

Max: Unlimited Participants

Players in this squad should be regularly playing:

Club Level Competitions & Regional Match Play Series.

Regional Development Squad

Max: 24 Players Selected per term

Players in this squad should be regularly playing:

Regional Match Play Series, Tennis Country Series, Junior Level Tournaments & Select Team Events.

*INVITE ONLY by Regional Committees

Bluewall High Performance Squad

Max: 12 Players Selected Annually

Players in this squad should be regularly playing:

Tennis Country Series, Roche Series, State and Premier tournaments & Junior ITF events.

TENNIS NSW 2024

Regional Development Pathway

Tennis NSW Country Player Development Pathway

Tennis NSW Tennis Country Regional Player Training Opportunities.
Development Squad is by invitation only.

North East		
Date	Event	Location
24 February	Open Day	Port Macquarie/Lismore
9 March	Development Squad	Sawtell
25 May	Open Day	Sawtell/Ballina
15 June	Development Squad	Sawtell
17 August	Open Day	Forster/Grafton
24 August	Development Squad	Sawtell/Ballina

Northumberland		
Date	Event	Location
10 February	Open Day	Newcastle
9 March	Development Squad	Lake Macquarie (Belmont)
4 May	Open Day	Singleton
15 June	Development Squad	Nelson Bay
3 August	Development Squad	East Maitland
17 August	Open Day	Gosford

North West		
Date	Event	Location
10 February	Open Day	Armidale
24 February	Development Squad	Gunnedah
4 May	Open Day	Narrabri
29 June	Development Squad	Inverell
3 August	Open Day	Tamworth
31 August	Development Squad	Moree

South East		
Date	Event	Location
10 February	Open Day	Kiama
17 February	Development Squad	Shoalhaven
4 May	Open Day	Ulladulla
25 May	Development Squad	Shoalhaven
24 August	Development Squad	Bulli
31 August	Open Day	Wollongong

South West		
Date	Event	Location
10 February	Open Day	South Wagga
24 February	Development Squad	Albury
4 May	Development Squad	Young
11 May	Open Day	Henty
3 August	Open Day	West Wyalong
17 August	Development Squad	St Pats Albury

Central West		
Date	Event	Location
10 February	Open Day	Springwood
17 February	Development Squad	Parkes
4 May	Open Day	Blayney
11 May	Development Squad	Nepean
3 August	Open Day	Dubbo
14 September	Development Squad	Bathurst

Tennis NSW Contacts

Tennis NSW Tennis Operations & Pathways Team

Jaslyn Hewitt-Shehadie

Head of Tennis Operations & Pathways

Jhewitt-Shehadie@tennis.com.au

Susan Harris

Operations Manager

sharris@tennis.com.au

Allira Smith-Connor

State Pathways Coordinator & Diversity
and Inclusion Events

allira.smithconnor@tennis.com.au

Adam O'Shannessy

Metro Sydney Pathway Coordinator

Adam.oshannessy@tennis.com.au

Megan McDonagh

Northern Regional Pathway Coordinator

Megan.mcdonagh@tennis.com.au

Mitchel Maloon

Southern Regional Pathway Coordinator

Mitchel.maloon@tennis.com.au

Selina Turulja

Player Pathways Coordinator

Selina.Turulja@tennis.com.au

Micaela Angeloni

Tennis Operations Administrator

Micaela.Angeloni@tennis.com.au





tournaments.tennis.com.au

 [@bluewalltennis](https://www.instagram.com/bluewalltennis) | [@tennis_nsw](https://www.instagram.com/tennis_nsw)