

Over the Net

The Australian Tennis Museum has started the year with a bang! The Medibank International Sydney 2010 was a buzz for the museum with many visitors walking through our doors.

The museum is now gearing up for the annual Ken Rosewall Luncheon fundraiser in May which is sure to be another hit! The volunteers continue to work with the collection and ensuring that Australian Tennis History is alive at the Australian Tennis Museum!

Medibank International Sydney 2010



Visitors enjoy the museum's new exhibition during the Medibank International Sydney Tournament 2010.

It was a hectic week at the Australian Tennis Museum during the Medibank International

Sydney this year. The museum was open from Sunday 10th January 2010 until Saturday 16th January 2010. The museum exceeded its expectations with over 3700 visitors walking through our doors for the duration of the tournament. Our most popular day was "Kid's Day" on the Monday with over 1000 visitors. In 2009 there were some 3200 visitors so this was a dramatic increase.

The increased popularity can be attributed to the new museum exhibition, "Tevolution—Australian Tennis Adaptations." This exhibition looks at how tennis has evolved in Australia and encourages visitors to interact with the displays. Two of the more popular areas of the museum exhibition were "Racquet Play" and "Virtual Game Play."

"Racquet Play" allowed visitors to compare old and new racquets and feel the difference. By far our most popular activity was "Virtual Game Play." Visitors were encouraged to play the Nintendo Wii game, "Grand Slam Tennis" and see if they were better on the virtual court. Special thanks to Harvey Norman Auburn for donating the Nintendo Wii console and accessories to the museum.



**Friends of the Australian
Tennis Museum
Newsletter
Issue 5, Year 2010**



Enjoying the Racquet Play activity.

Medibank International Sydney 2010 Continued...



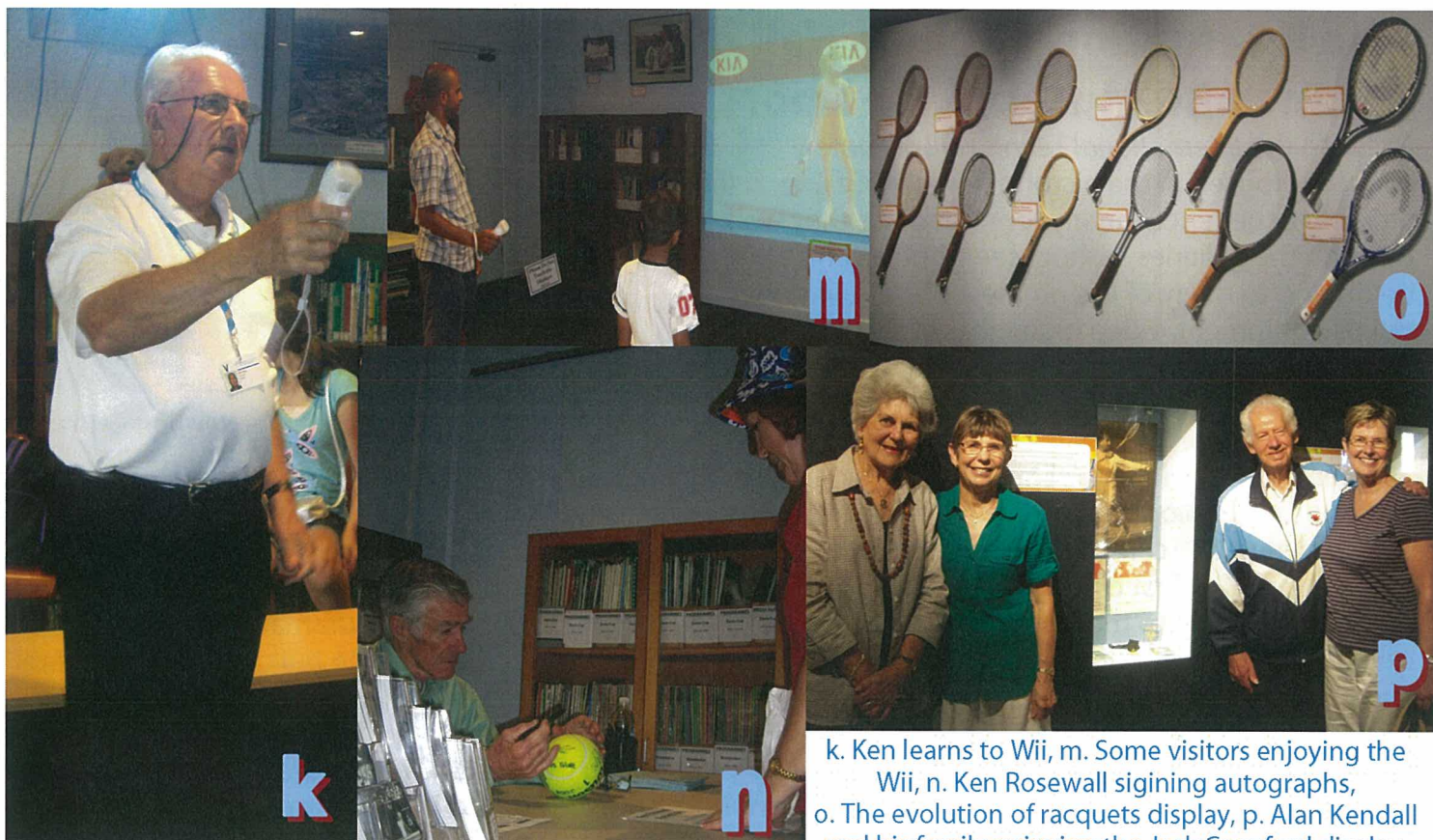
The new and improved Museum Gift Shop.

Another popular element of the museum this year was the *Australian Tennis Museum Gift Shop*. The museum recently updated its merchandise so that it could raise some much needed funds. The shop was extremely successful with over \$5500.00 in merchandise sales, a considerable improvement from last year. Included with your issue of "Over the Net" is an order form for the museum shop. Why not check out what new stock we have, there might be something that catches your eye.

Overall the tournament was extremely successful for the museum this year. Thank you to all the volunteers that helped make the museum a hit!



- a. Kylie & Aimee channel their inner Lleyton, b. Marion has a go at the Wii, c. Karen is perplexed by the Wii, d. Phoebe and Karen want Lleyton to win, e. Warren's fan club, f. The museum display, g. Museum Patron Ken Rosewall doing an interview, h. Beryl and Denise enjoying the museum shop, i. Guy finds a hiding place when the museum gets busy, j. Barbara and Bobbie all ready to hand out museum flyers.



k. Ken learns to Wii, m. Some visitors enjoying the Wii, n. Ken Rosewall signing autographs, o. The evolution of racquets display, p. Alan Kendall and his family enjoying the Jack Crawford display.

Museum Raffle

Congratulations to Beryl Eagar of Ermington who won the museum raffle held during the Medibank International Sydney 2010. Beryl was the lucky recipient of a gift pack consisting of the brand new *Australian Tennis Museum Gift Shop* Merchandise.

Well Done Beryl!



Lleyton Hewitt Signed Yonex Shirt

During the Medibank International Sydney 2010 the museum sold Yonex Shirts just like the ones worn by Lleyton Hewitt. Everyone who purchased a shirt went into a draw to win a shirt signed by Lleyton Hewitt.

Congratulations Jesse Mesa of Georges Hall who was the lucky winner!

Thank you Miss Chidgey!

A special thank you to museum volunteer Bobbie Chidgey who recently donated a brand new vacuum cleaner to the museum. The donation is greatly appreciated!

The International Tennis Hall of Fame and Museum, Newport

A visit to the *International Tennis Hall of Fame & Museum*, housed in the historic Newport Casino, is the ultimate experience for any tennis fan. As they walk through the galleries, visitors see trophies and attire belonging to many of the greatest players, vintage tennis equipment, video highlights of some of the most unforgettable matches and tennis clothing ranging from Victorian dresses to modern fashion.



The historic museum grounds at Newport Casino.

The permanent galleries tell the story of tennis from its origins in the 12th century to the game of today. Arranged chronologically, the exhibits highlight the growth and development of tennis through the 19th, 20th, and early 21st centuries, with a particular emphasis on its cultural impact. The stories of our Hall of Famers, from the first class of inductees in 1955 to today, are told throughout the galleries and provide personal insight into the historical developments of the game. The exhibits are dramatically set in the original rooms of the Newport Casino, where visitors of all ages can delight in the building's architectural and artistic detail.



Part of the museum display.

Visitors are also invited to tour the historic grounds. The Newport Casino's 13 historic courts are the world's oldest continuously used competition grass courts in the world. The first U.S. National Lawn Tennis Championship, the forerunner of today's US Open, was first held at the Newport Casino in 1881, and annually thereafter until 1915.

Founded in 1880, the Newport Casino was designed by the American architectural firm of McKim, Mead & White. The building represents one of the world's finest examples of Victorian shingle-style architecture and was the premier social club for the city's wealthy summer residents featuring

shops, a billiards room, a theatre, tennis courts and sweeping porches lined with intricate lattice work. This beautifully preserved structure is a National Historic Landmark and one of Newport's premier architectural treasures.

Today, the site is home to the only men's professional grass court tournament in North America, the Campbell's Hall of Fame Tennis Championships. In addition, these are the only competition grass courts open to the public for play. The International Tennis Hall of Fame also features an indoor tennis facility (3 hard courts), one clay court, and a Court Tennis Facility.

The Museum is part of the *International Tennis Hall of Fame* which was established in 1954 and is dedicated to preserving the history of tennis, inspiring and encouraging junior tennis development, enshrining tennis heroes and heroines, and providing a landmark for tennis enthusiasts worldwide. Each year legends of tennis both on and off the court receive the ultimate honour, induction into the International Tennis Hall of Fame.



Part of the museum display.

Members of the *Friends of the Australian Tennis Museum* receive free entry and a 10% discount for the Museum Shop, Tennis Store and Online Store. For more information visit www.tennisfame.com.



This years luncheon guest speaker, John Alexander OAM.

Ken Rosewall Luncheon 2010

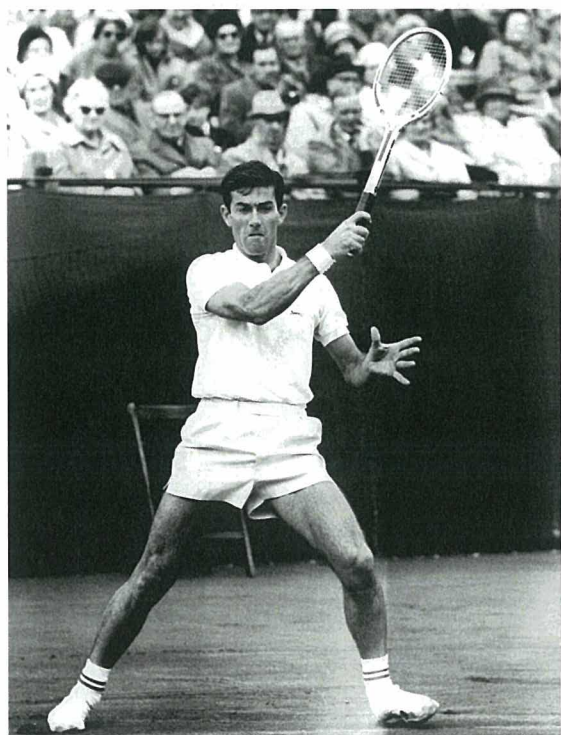
The museum's annual Ken Rosewall fundraiser Luncheon will be held on Monday 24th May 2010 with special guest speaker, John Alexander OAM. John played during the 1960s through to the 1980s and has recently begun pursuing a political career. It is sure to be an interesting day with tales from John.

Tickets are \$70.00pp and funds go towards the valuable work the museum completes maintaining its collection.

Keep an eye on your mail box as invitations will arrive shortly.

Museum Patron Ken Rosewall Inducted as a Legend into The Sport Australia Hall of Fame!

In October 2009 Ken Rosewall was honoured by being inducted as a Legend into The *Sport Australia Hall of Fame* along with Edwin Flack (Athletics). This honour is given to sports people who have achieved great milestones at the highest level of their sport and by doing so have inspired their fellow Australians.

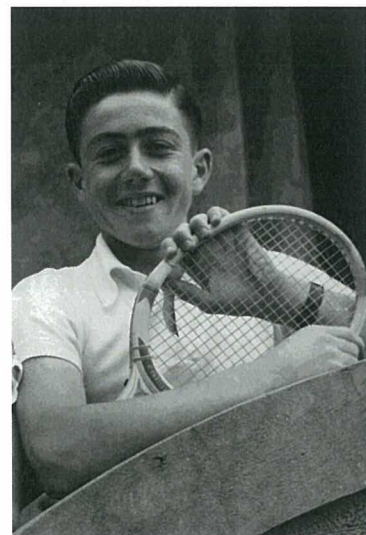


Ken in action!

Previous legends inducted include Sir Donald Bradman (Cricket), Herb Elliot (Athletics), Bart Cummings (Horse Racing), Greg Norman (Golf), Rod Laver, Margaret Court, Evonne Goolagong Cawley (Tennis), Bill Roycroft (Equestrian), Dawn Fraser (Swimming) and Shirley (Strickland) De La Hunty (Athletics).

Ken was the 30th Legend to be admitted.

If you are interested in visiting the *The Sport Australia Hall of Fame* it is located at the *National Sports Museum* in Melbourne. Members of the *Friends of the Australian Tennis Museum* receive a 10% discount on adult entry to the museum (www.nsm.org.au).



Ken in his early years of tennis.

Volunteer Spotlight!

The museum is extremely grateful to all the volunteers that dedicate their free time to help the museum carry out all the activities that are imperative for it to survive. In each issue of the Friend's newsletter a museum volunteer will be featured so that the Friends can learn about the important jobs they carry out at the museum. So let's get the ball rolling and introduce you to our first volunteer in the spotlight.



Warren with his fan club.

Name: Warren Cope aka "The Racquet Man"

| | |
|---|--|
| When did you first start volunteering at the museum? | 2002 |
| Favourite Food: | Roast Lamb |
| Favourite Colour: | Blue |
| Favourite Book: | Any book that puts me to sleep after 10pm |
| Your Favourite Motto: | Do unto others as you would have other do unto you (some people add—but do it first!) |
| Why did you start volunteering at the museum? | Tennis was my sport from school days and the museum was a medium to continue that interest. |
| What is your favourite aspect of the museum? | Seeing the interest created by the museum to those who have not seen the interesting items it contains. |
| What is your favourite item in the museums collection? | Difficult—not sure I've seen them all but the "Lottie Dodd" must be way up there from so many years ago and the racquet collection is interesting. |
| Who is your all time favourite tennis player? | Another hard one—I will go with Ken Rosewall seeing I've known him since 1948. |
| Why should people come and visit the museum? | Because there is so much of old tennis history to be seen and it is mostly Australian. |
| What is your favourite tennis match of all time? | Davis Cup 1953—K Rosewall vs. V Seixas, I heard some of it on the radio and later in a newsreel theatre, many agree I'm sure! |
| Which Grand Slam is your favourite? | Australian, because I am! |

AUSTRALIAN TENNIS MUSEUM
<http://www.tennis.com.au/museum>
PO Box Silverwater, NSW, 1811

Sydney Olympic Park Tennis Centre, Rod Laver Drive, Sydney Olympic Park, NSW, 2127
Ph: (02) 9024 7629
Email: museum@tennis.com.au

