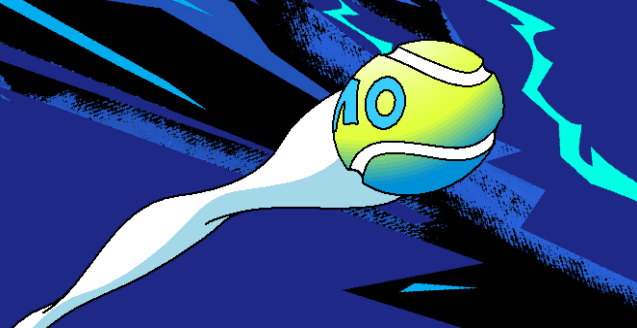


# PWII Fact Sheet

14–28 January

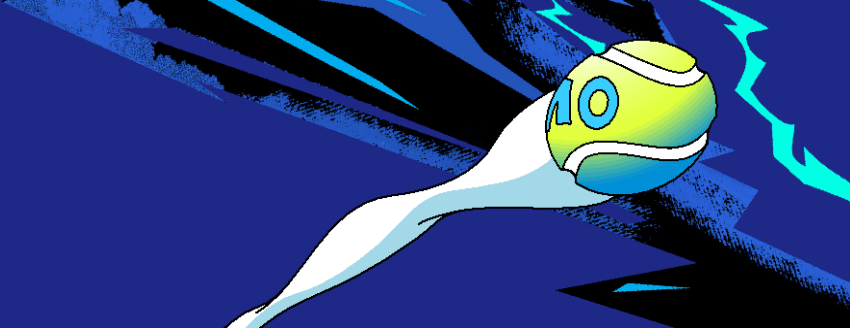


## Tournament Details

<b>Tournament Dates</b>	Friday 26 January 2024 to Sunday 28 January 2024											
<b>Venue</b>	<b>Melbourne Park</b> Batman Avenue Melbourne VIC 3000											
<b>Player Registration Form</b>	Complete the <a href="#">AO24 PWII Championship Registration Form</a> (player & coach/support)											
<b>Registration Deadline</b>	<b>Monday 4 December 2023</b>											
<b>Tournament Website</b>	<a href="https://tournaments.tennis.com.au/tournament/2EAF9BFF-3C1C-427C-BD08-3D08752C274A">https://tournaments.tennis.com.au/tournament/2EAF9BFF-3C1C-427C-BD08-3D08752C274A</a>											
<b>Tournament Director</b>	Jennifer Johnson											
<b>Tournament Referee</b>	Tony Warland											
<b>Tournament Physiotherapy</b>	Amy Shipperd											
<b>Surface</b>	Greenset Cushion											
<b>Ball</b>	Dunlop Australian Open											
<b>Electronic Review</b>	There will be no live electronic line calling											
<b>Draw / Format</b>	<table border="1"> <thead> <tr> <th>Event</th> <th>Draw</th> <th>Format</th> </tr> </thead> <tbody> <tr> <td>Women's Singles Men's Singles</td> <td>Round Robin + Playoffs (8 players)</td> <td>Best of 2 sets, 3<sup>rd</sup> set match tiebreak</td> </tr> <tr> <td>Women's Doubles Men's Doubles</td> <td>Round Robin (4 pairs)</td> <td>Best of 2 sets, 3<sup>rd</sup> set match tiebreak, no ad scoring</td> </tr> </tbody> </table>	Event	Draw	Format	Women's Singles Men's Singles	Round Robin + Playoffs (8 players)	Best of 2 sets, 3 <sup>rd</sup> set match tiebreak	Women's Doubles Men's Doubles	Round Robin (4 pairs)	Best of 2 sets, 3 <sup>rd</sup> set match tiebreak, no ad scoring		
Event	Draw	Format										
Women's Singles Men's Singles	Round Robin + Playoffs (8 players)	Best of 2 sets, 3 <sup>rd</sup> set match tiebreak										
Women's Doubles Men's Doubles	Round Robin (4 pairs)	Best of 2 sets, 3 <sup>rd</sup> set match tiebreak, no ad scoring										
<b>Seedings &amp; Pairings</b>	Singles Seedings – Players will be seeded according to their current Virtus world ranking. Doubles Pairings – Pairs will be determined according to singles seedings											
<b>Event Schedule</b>	<ul style="list-style-type: none"> <li><b>Wednesday 24 January:</b> Player Practice Session (TBC)</li> <li><b>Thursday 25 January:</b> Player Practice Session (TBC) Official Welcome (Eastern Terrace, upstairs at John Cain Arena) Player Function (TBC)</li> <li><b>Friday 26 January:</b> Day 1 Matches (Melbourne Park)</li> <li><b>Saturday 27 January:</b> Day 2 Matches (Melbourne Park)</li> <li><b>Sunday 28 January:</b> Day 3 Matches &amp; Presentations (Melbourne Park)</li> </ul>											
<b>Ranking Points</b>	Virtus World Ranking Points (points allocations will be shared in January 2024)											
<b>Prize Money</b>	<ul style="list-style-type: none"> <li>Details of Player Prize Money (PPM) will be announced in January 2024.</li> <li>Prize money will be paid in Australian Dollars (AUD) into players' nominated bank accounts.</li> </ul>											
<b>Coaching</b>	<ul style="list-style-type: none"> <li>Coaches and supports are not permitted on the court during matches unless the tournament referee gives permission. No coaching is permitted during any matches, the coach/supports role is to encourage and support their player and assist them to prepare for matches.</li> </ul>											
<b>Attire</b>	<ul style="list-style-type: none"> <li>Players are required to wear generally accepted tennis attire (no large logos on shirts/shorts) and tennis shoes. AO towels will be provided in player gif bags and some plain white towels will also be provide on-court during the tournament.</li> </ul>											

# PWII Fact Sheet

14–28 January



Pre-Arrival Details & Key Benefits	
<p><b>Visa</b></p>	<ul style="list-style-type: none"> <li>Please see visa information (Junior/Amateur Player); <a href="https://absoluteimmigrationtennis.com/visa-information">https://absoluteimmigrationtennis.com/visa-information</a></li> <li>Request your Letter of Invitation; <a href="https://absoluteimmigrationtennis.com/letter-of-invitation">https://absoluteimmigrationtennis.com/letter-of-invitation</a></li> <li>Apply for visa before <b>20 November 2023</b></li> </ul>
<p><b>Accommodation</b></p>	<p><b>Pullman Melbourne On The Park</b> (Official Tournament Hotel) 192 Wellington Parade East Melbourne VIC 3002 <a href="https://www.pullmanonthepark.com.au/">https://www.pullmanonthepark.com.au/</a></p> <ul style="list-style-type: none"> <li>Accommodation will be provided for each player +1 coach/support (twin share) for the duration of the event (Tennis Australia will coordinate bookings for you).</li> <li><b>Check-in: Thursday 25<sup>th</sup> January</b></li> <li><b>Check-out: Monday 29<sup>th</sup> January</b></li> <li>Any additional nights or additional rooms required will be subject to availability and at the players own expense at AUD \$335 per night (for superior king or twin share). Additional nights or room requests will be confirmed via email asap.</li> <li>Please indicate on the Player Registration Form your accommodation requirements, dates and guest numbers.</li> <li>Buffet breakfast is NOT included and is AUD \$30 per person per day.</li> </ul>
<p><b>Travel Subsidy</b></p>	<ul style="list-style-type: none"> <li>All players will receive <b>AUD \$500 travel subsidy</b> which will be paid at the end of AO 2024.</li> </ul>
<p><b>Airport Transfer</b></p>	<ul style="list-style-type: none"> <li>Airport transfers will be provided for each player, coach/support and family (more details to come soon!)</li> </ul>
<p><b>Transport</b></p>	<ul style="list-style-type: none"> <li>Accommodation is only a short walk from Melbourne Park</li> <li>Players and coaches/supports will also have FREE access to Melbourne Tram network by showing your AO Accreditation pass (download the PTV app).</li> <li>If you require further assistance please visit – <a href="#">Getting here   AO (ausopen.com)</a></li> </ul>
<p><b>Accreditation</b></p>	<ul style="list-style-type: none"> <li>Collection of passes will be available at the tournament hotel or at Melbourne Park shortly after your arrival. Players will receive more details via email before they arrive.</li> <li>Accreditation is required to access the site.</li> <li>All nominations of Coach/Support and Family are final and accreditation passes are non-transferable.</li> <li>No accreditation passes will be provided until you have agreed to the AO Accreditation Terms and Conditions in the Player Registration Form.</li> <li>Players are responsible for the behaviour of their guests and any unsuitable behaviour may result in the confiscation of accreditation passes.</li> </ul>
<p><b>Meal Allowance</b></p>	<ul style="list-style-type: none"> <li>Player and Coach/Support meal allowance (EMA) is <b>\$50 AUD per day</b> and will be applied to accreditation passes.</li> <li>Any difference, once the daily credit has been spent, must be paid for by the user. This can be used at selected AO Cafes (permanent food outlets or staff cafes – AO Map).</li> <li>All Meal Credits start on Thursday 25 January and ends on Sunday 28 January. Meal Credit cannot be used for the purchase of alcohol or takeaway from the AO Cafes.</li> </ul>
<p><b>AO Gift Bag</b></p>	<ul style="list-style-type: none"> <li>All players will receive an AO Gift Bag on arrival.</li> </ul>
<p><b>Gymnasium</b></p>	<ul style="list-style-type: none"> <li>All players and coaches/support will have access to the gym located upstairs of the National Tennis Centre.</li> </ul>
<p><b>Restringing Service</b></p>	<ul style="list-style-type: none"> <li>All players will have access to the restringing service located under Rod Laver Arena.</li> <li>More details soon!</li> </ul>

### Terms and Conditions

Participation in the Australian Open 2024 is subject to the terms and conditions of the Player Registration Form.